



UK Office

Everest Biotech Ltd

Cherwell Innovation Centre
77 Heyford Park
Upper Heyford
Oxfordshire
OX25 5HD
UK

Enquiries:

info@everestbiotech.com

Sales:

sales@everestbiotech.com

Tech support:

support@everestbiotech.com

Tel: +44 (0)1869 238326

www.everestbiotech.com

**Research Use Only. Not for
diagnostic or therapeutic use.**

EB07758 - Goat Anti-CSNK1E Antibody

Size: 100µg specific antibody in 200µl



Target Protein

Principal Names: CSNK1E, casein kinase 1, epsilon, RP1-5O6.1, HCKIE, MGC10398, CKI-epsilon, OTTHUMP00000063258, OTTHUMP00000063263, casein kinase 1 epsilon, casein kinase I epsilon

Official Symbol: CSNK1E

Accession Number(s): NP_001276841.1

Human GeneID(s): [1454](#)

Non-Human GeneID(s): 27373 (mouse), 58822 (rat)

Immunogen

Peptide with sequence C-PASQTSVPFDHLGK, from the C Terminus of the protein sequence according to NP_001276841.1.

Please note the [peptide](#) is available for sale.

Purification and Storage

Purified from goat serum by ammonium sulphate precipitation followed by antigen affinity chromatography using the immunizing peptide.

Supplied at 0.5 mg/ml in Tris saline, 0.02% sodium azide, pH7.3 with 0.5% bovine serum albumin.

Aliquot and store at -20°C. Minimize freezing and thawing.

Applications Tested

Peptide ELISA: antibody detection limit dilution 1:32000.

Western blot: Approx 48kDa band observed in nuclear lysates of cell lines A431 and HeLa, and approx 45kDa in nuclear lysates of cell line K562 (calculated MW of 47.3kDa according to NP_001276841.1). Recommended concentration: 0.3-1µg/ml. Primary incubation 1 hour at room temperature.

IHC: Paraffin embedded Human Tonsil. Recommended concentration: 5µg/ml.

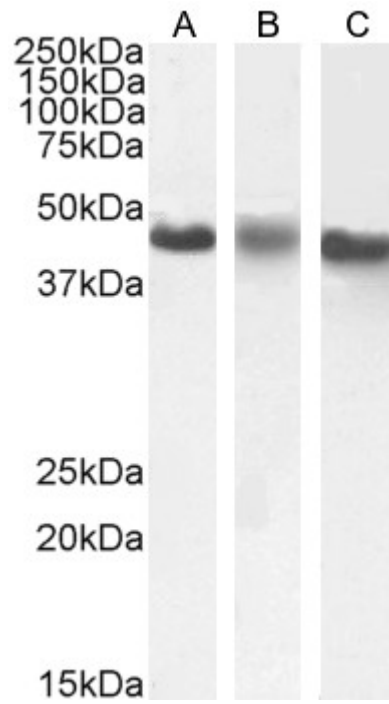
Immunofluorescence: Strong expression of the protein seen in the cytoplasm of HeLa and A431 cells. Recommended concentration: 10µg/ml.

Flow Cytometry: Flow cytometric analysis of A431 cells. Recommended concentration: 10ug/ml.

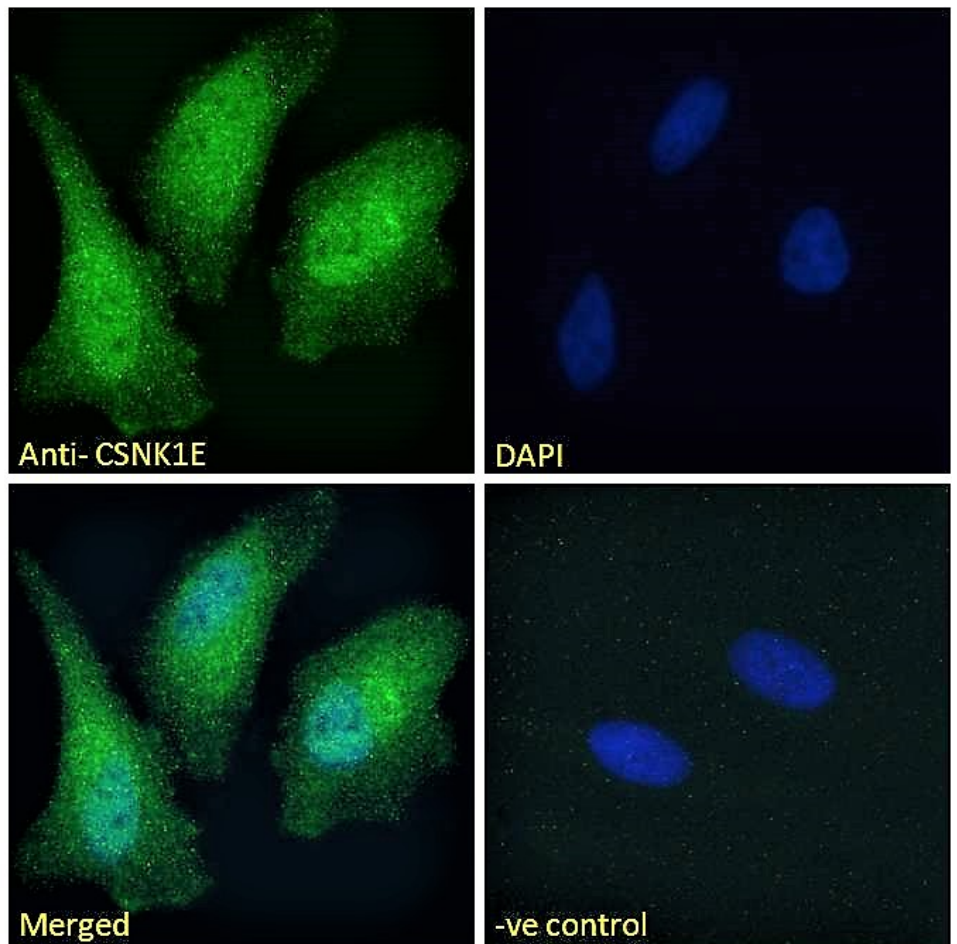
Species Reactivity

Tested: Human

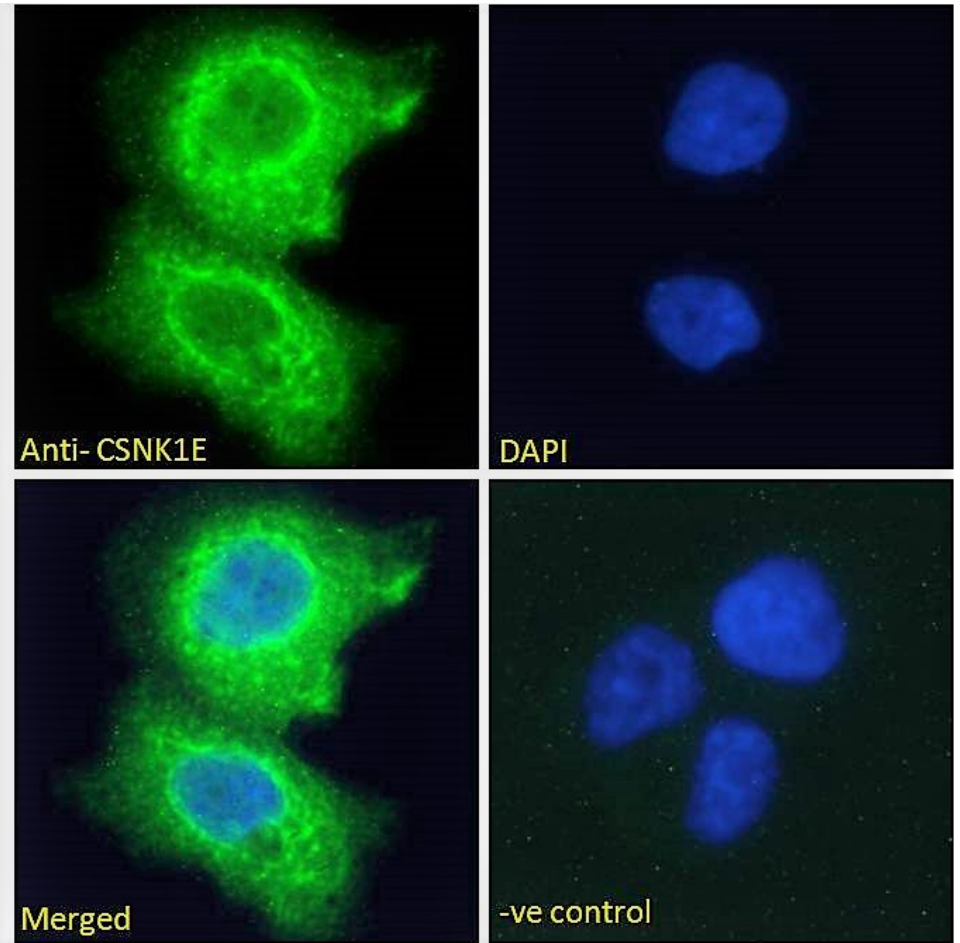
Expected from sequence similarity: Human, Mouse, Rat, Dog



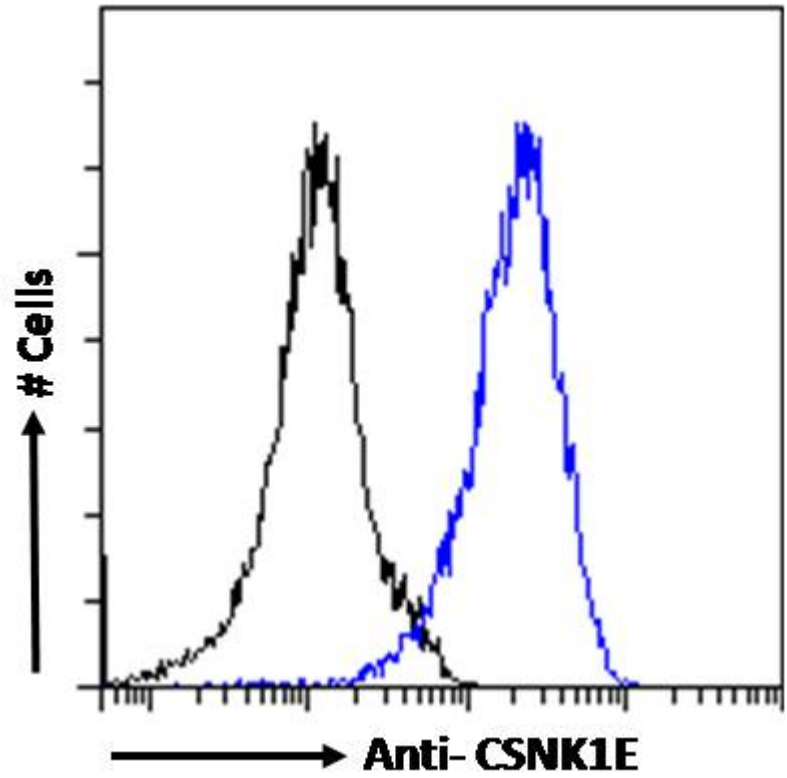
EB07758 (1 μ g/ml) staining of A431(A), HeLa (B) and K562 (C) nuclear cell lysate (35 μ g protein in RIPA buffer).
Detected by chemiluminescence.



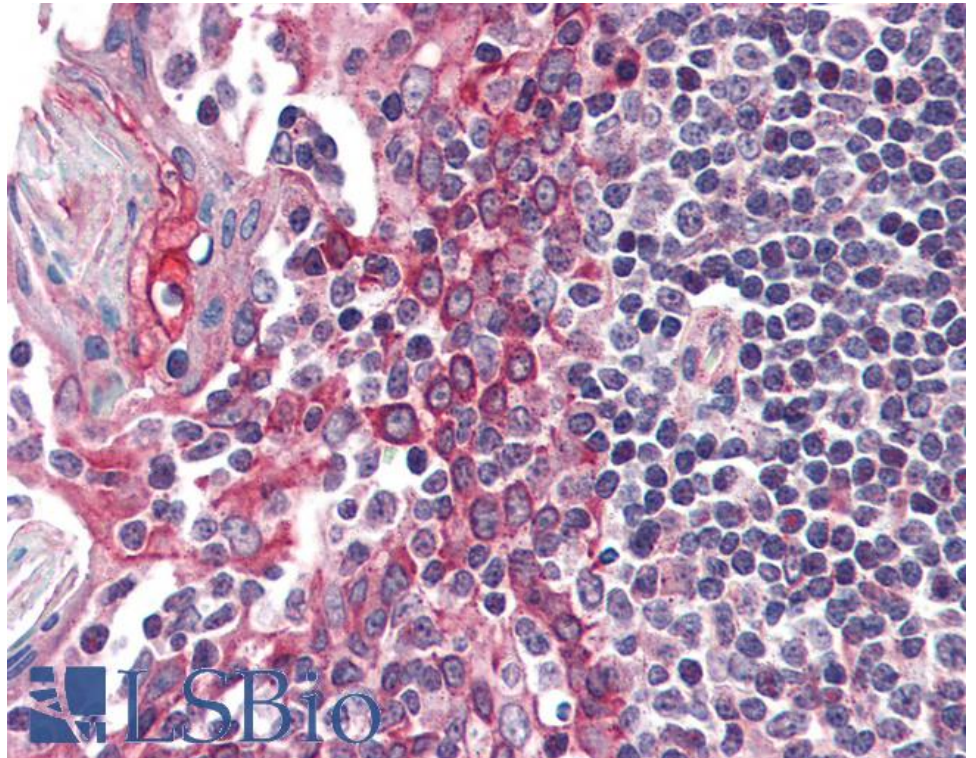
EB07758 Immunofluorescence analysis of paraformaldehyde fixed HeLa cells, permeabilized with 0.15% Triton. Primary incubation 1hr (10 μ g/ml) followed by Alexa Fluor 488 secondary antibody (2 μ g/ml), showing nuclear and cytoplasmic staining. The nuclear stain is DAPI (blue). Negative control: Unimmunized goat IgG (10 μ g/ml) followed by Alexa Fluor 488 secondary antibody (2 μ g/ml).



EB07758 Immunofluorescence analysis of paraformaldehyde fixed A431 cells, permeabilized with 0.15% Triton. Primary incubation 1hr (10ug/ml) followed by Alexa Fluor 488 secondary antibody (2ug/ml), showing cytoplasmic staining. The nuclear stain is DAPI (blue). Negative control: Unimmunized goat IgG (10ug/ml) followed by Alexa Fluor 488 secondary antibody (2ug/ml).



EB07758 Flow cytometric analysis of paraformaldehyde fixed A431 cells (blue line), permeabilized with 0.5% Triton. Primary incubation 1hr (10ug/ml) followed by Alexa Fluor 488 secondary antibody (1ug/ml). IgG control: Unimmunized goat IgG (black line) followed by Alexa Fluor 488 secondary antibody.



EB07758 (5µg/ml) staining of paraffin embedded Human Tonsil. Steamed antigen retrieval with citrate buffer Ph 6, AP-staining.