



UK Office

Everest Biotech Ltd

Cherwell Innovation Centre
77 Heyford Park
Upper Heyford
Oxfordshire
OX25 5HD
UK

Enquiries:

info@everestbiotech.com

Sales:

sales@everestbiotech.com

Tech support:

support@everestbiotech.com

Tel: +44 (0)1869 238326

Fax: +44 (0)1869 238327

US Office

Everest Biotech c/o Abcore

405 Maple Street, Suite A106
Ramona,
CA 92065
USA

Inquiries:

info@everestbiotech.com

Sales:

usasales@everestbiotech.com

Tech support:

support@everestbiotech.com

Tel: 888-320-4628 (toll-free)

Fax: 888-841-9041

www.everestbiotech.com

**Research Use Only. Not for
diagnostic or therapeutic use.**

EB12709 - Goat Anti-CSNK2B (aa172-186) Antibody

Size: 100µg specific antibody in 200µl



Target Protein

Principal Names: CSNK2B, casein kinase 2, beta polypeptide, CK2B, CK2N, CSK2B, G5A, CK II beta, Casein kinase II beta subunit, alternative name: G5a, phosvitin, casein kinase II subunit beta, phosvitin, protein G5a

Official Symbol: CSNK2B

Accession Number(s): NP_001311.3; NP_001269314.1

Human GeneID(s): [1460](#)

Non-Human GeneID(s): 13001 (mouse), 81650 (rat)

Important Comments: This antibody is expected to recognize both reported isoforms (NP_001311.3; NP_001269314.1).

Immunogen

Peptide with sequence C-PEYRPKRPANQFVPR, from the internal region of the protein sequence according to NP_001311.3; NP_001269314.1.

Please note the [peptide](#) is available for sale.

Purification and Storage

Purified from goat serum by ammonium sulphate precipitation followed by antigen affinity chromatography using the immunizing peptide.

Supplied at 0.5 mg/ml in Tris saline, 0.02% sodium azide, pH7.3 with 0.5% bovine serum albumin.

Aliquot and store at -20°C. Minimize freezing and thawing.

Applications Tested

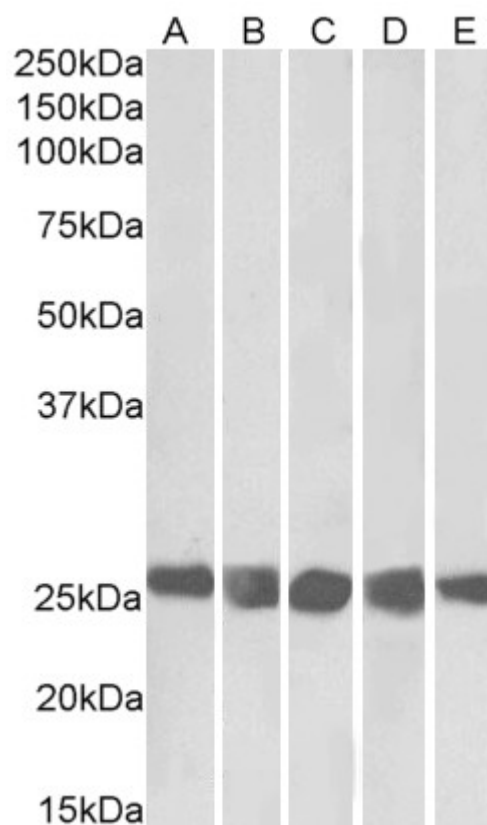
Peptide ELISA: antibody detection limit dilution 1:128000.

Western blot: Approx 26kDa band observed in lysates of cell lines NIH3T3, HeLa, K562, MCF7 and HepG2, and in Pig Testis lysates (calculated MW of 24.9kDa according to Human, NP_001311.3, Mouse NP_034105.1 and Pig NP_001138849.1). Recommended concentration: 0.1-0.3µg/ml.

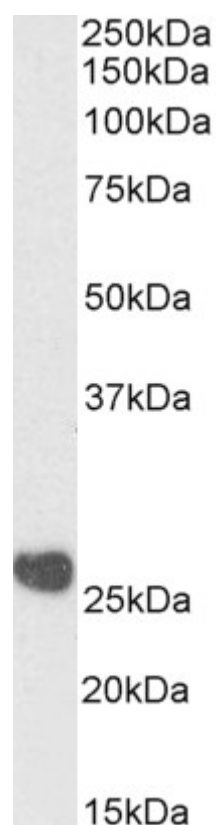
Species Reactivity

Tested: Human, Mouse, Pig

Expected from sequence similarity: Human, Mouse, Rat, Dog, Pig, Cow



EB12709 (0.3 μ g/ml) staining of NIH3T3 (A), HeLa (B), K562 (C), MCF7 (D) and HepG2 (E) lysates (35 μ g protein in RIPA buffer). Primary incubation was 1 hour. Detected by chemiluminescence.



EB12709 (0.3 μ g/ml) staining of Pig Testis lysate (35 μ g protein in RIPA buffer). Primary incubation was 1 hour. Detected by chemiluminescence