



## UK Office

### Everest Biotech Ltd

Cherwell Innovation Centre  
77 Heyford Park  
Upper Heyford  
Oxfordshire  
OX25 5HD  
UK

Enquiries:

[info@everestbiotech.com](mailto:info@everestbiotech.com)

Sales:

[sales@everestbiotech.com](mailto:sales@everestbiotech.com)

Tech support:

[support@everestbiotech.com](mailto:support@everestbiotech.com)

Tel: +44 (0)1869 238326

Fax: +44 (0)1869 238327

## US Office

### Everest Biotech c/o Abcore

405 Maple Street, Suite A106  
Ramona,  
CA 92065  
USA

Inquiries:

[info@everestbiotech.com](mailto:info@everestbiotech.com)

Sales:

[usasales@everestbiotech.com](mailto:usasales@everestbiotech.com)

Tech support:

[support@everestbiotech.com](mailto:support@everestbiotech.com)

Tel: 888-320-4628 (toll-free)

Fax: 888-841-9041

[www.everestbiotech.com](http://www.everestbiotech.com)

**Research Use Only. Not for  
diagnostic or therapeutic use.**

## EB12710 - Goat Anti-CSNK2B Antibody

Size: 100µg specific antibody in 200µl



### Target Protein

**Principal Names:** CSNK2B, casein kinase 2, beta polypeptide, CK2B, CK2N, CSK2B, G5A, CK II beta, Casein kinase II beta subunit, alternative name: G5a, phosvitin, casein kinase II subunit beta, phosvitin, protein G5a

**Official Symbol:** CSNK2B

**Accession Number(s):** NP\_001311.3; NP\_001269314.1

**Human GeneID(s):** [1460](#)

**Non-Human GeneID(s):** 13001 (mouse), 81650 (rat)

**Important Comments:** This antibody is expected to recognize both reported isoforms (NP\_001311.3; NP\_001269314.1).

### Immunogen

Peptide with sequence C-TGLNEQVPHYRQ, from the internal region of the protein sequence according to NP\_001311.3; NP\_001269314.1.

Please note the [peptide](#) is available for sale.

### Purification and Storage

Purified from goat serum by ammonium sulphate precipitation followed by antigen affinity chromatography using the immunizing peptide.

Supplied at 0.5 mg/ml in Tris saline, 0.02% sodium azide, pH7.3 with 0.5% bovine serum albumin.

Aliquot and store at -20°C. Minimize freezing and thawing.

### Applications Tested

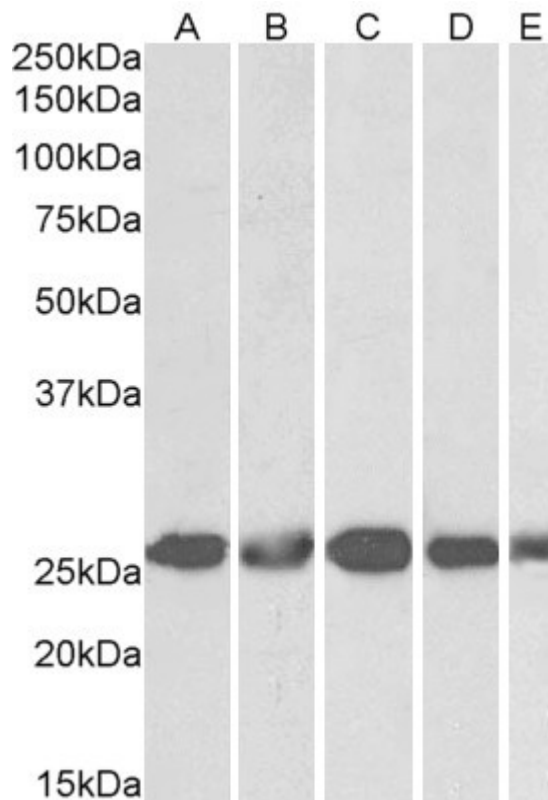
**Peptide ELISA:** antibody detection limit dilution 1:128000.

**Western blot:** Approx 26kDa band observed in lysates of cell lines NIH3T3, HeLa, K562, MCF7 and HepG2 (calculated MW of 24.9kDa according to NP\_001311.3). Approx 25kDa band observed in Mouse Testis, 26kDa in Rat Testis and 28kDa in Pig Testis lysates (calculated MW of 24.9kDa according to Mouse NP\_001290374.1, Rat NP\_001030315.1 and pig NP\_001138849.1). This molecular weight is routinely observed by other sources. Recommended concentration: 0.3-1µg/ml.

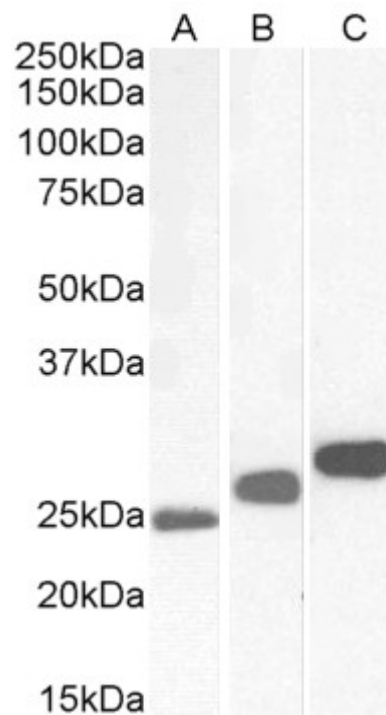
### Species Reactivity

**Tested:** Human, Mouse, Rat, Pig

**Expected from sequence similarity:** Human, Mouse, Rat, Dog, Pig, Cow



EB12710 (1 $\mu$ g/ml) staining of NIH3T3 (A), HeLa (B), K562 (C), MCF7 (D) and HepG2 (E) lysates (35 $\mu$ g protein in RIPA buffer). Primary incubation was 1 hour. Detected by chemiluminescence.



EB12710 (0.3 $\mu$ g/ml) staining of Mouse (A), Rat (B) and Pig (C) Testis lysates (35 $\mu$ g protein in RIPA buffer). Primary incubation was 1 hour. Detected by chemiluminescence.