



International Office

Everest Biotech Ltd

Vector Laboratories, Inc.
6737 Mowry Ave
Newark, CA 94560
United States

Customer Service:

customerservice@vectorlabs.com

Technical Service:

technical@vectorlabs.com

Tel: +1 (800) 227-6666

www.everestbiotech.com

**Research Use Only. Not for
diagnostic or therapeutic use.**

EB09104 - Goat Anti-CSRP3 Antibody

Size: 100µg specific antibody in 200µl



Target Protein

Principal Names: CSRP3, cysteine and glycine-rich protein 3 (cardiac LIM protein), CLP, CMD1M, CRP3, LMO4, MGC14488, MGC61993, MLP, LIM domain only 4, cardiac LIM domain protein, cardiac LIM protein, cysteine and glycine-rich protein 3, cysteine-rich protein 3, muscle LIM protein

Official Symbol: CSRP3

Accession Number(s): NP_003467.1

Human GeneID(s): [8048](#)

Non-Human GeneID(s): 13009 (mouse), 117505 (rat)

Immunogen

Peptide with sequence CGKSLESTNVTDKD, from the internal region of the protein sequence according to NP_003467.1.

Please note the [peptide](#) is available for sale.

Purification and Storage

Purified from goat serum by ammonium sulphate precipitation followed by antigen affinity chromatography using the immunizing peptide.

Supplied at 0.5 mg/ml in Tris saline, 0.02% sodium azide, pH7.3 with 0.5% bovine serum albumin.

Aliquot and store at -20°C. Minimize freezing and thawing.

Applications Tested

Peptide ELISA: antibody detection limit dilution 1:32000.

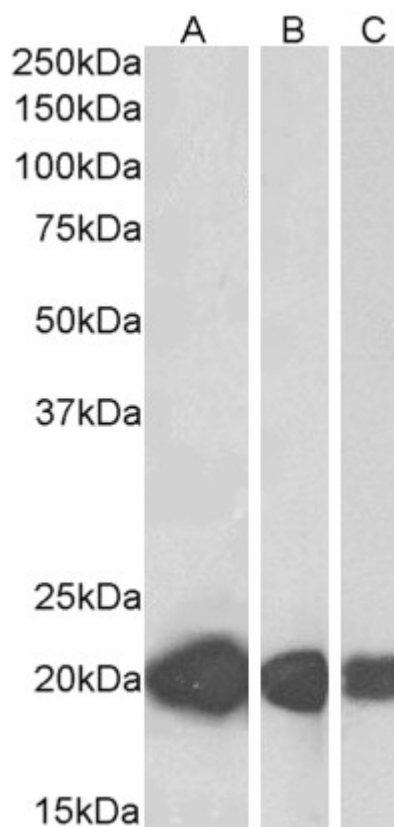
Western blot: Approx. 20kDa band observed in Human, Mouse and Rat Heart lysates (calculated MW of 21.0kDa according to Human NP_003467.1 and 20.8kDa according to Rat NP_476485.1). Recommended concentration: 0.01-0.03µg/ml. Primary incubation was 1 hour.

IHC: Paraffin embedded Human Skeletal Muscle and Heart. Recommended concentration: 2.5µg/ml.

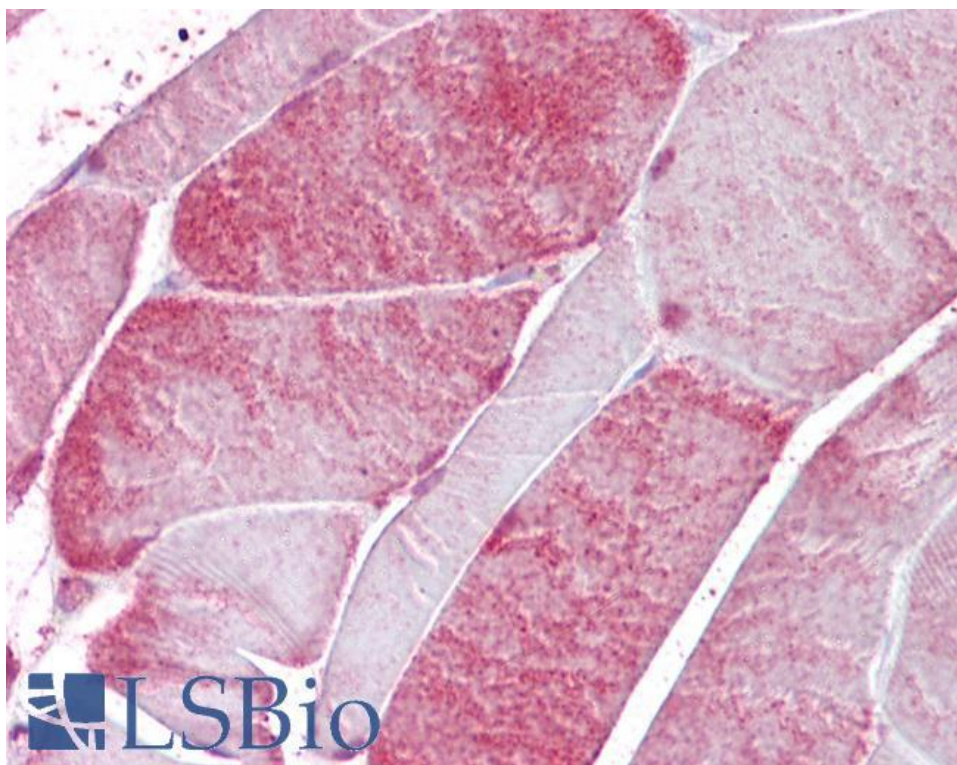
Species Reactivity

Tested: Human, Mouse, Rat

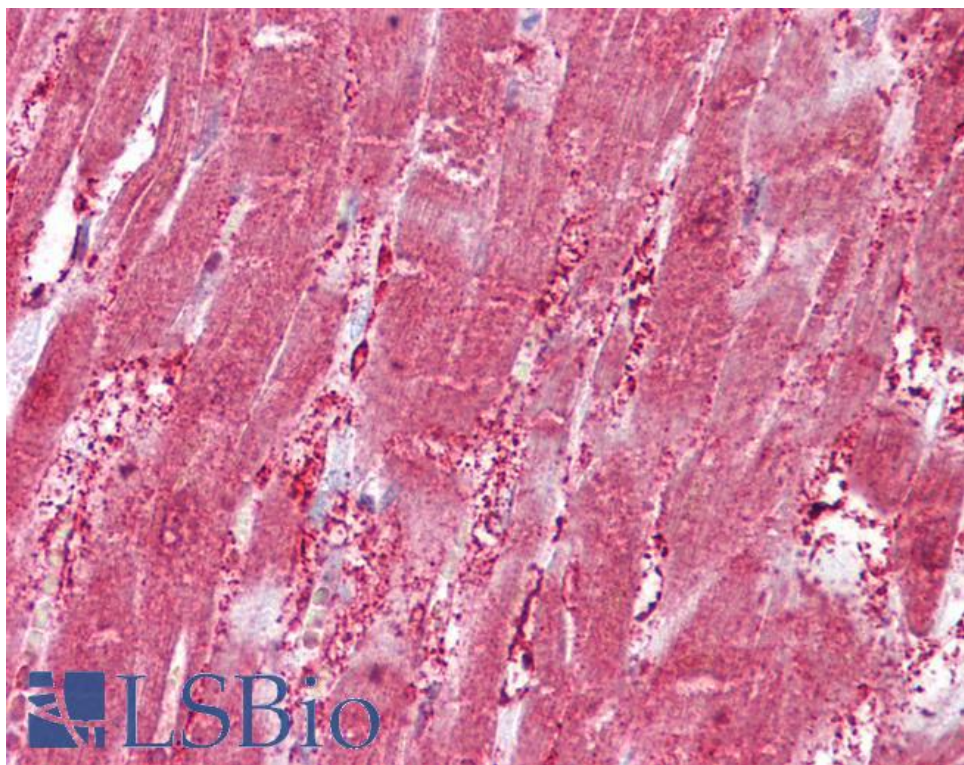
Expected from sequence similarity: Human, Mouse, Rat, Dog, Cow



EB09104 (0.01µg/ml) staining of Human (A), Mouse (B) and Rat (C) Heart lysate (35µg protein in RIPA buffer).
Detected by chemiluminescence.



EB09104 (2.5µg/ml) staining of paraffin embedded Human Skeletal Muscle. Steamed antigen retrieval with citrate buffer pH 6, AP-staining.



EB09104 (2.5µg/ml) staining of paraffin embedded Human Heart. Steamed antigen retrieval with citrate buffer pH 6, AP-staining.