



International Office

Everest Biotech Ltd

Vector Laboratories, Inc.
6737 Mowry Ave
Newark, CA 94560
United States

Customer Service:

customerservice@vectorlabs.com

Technical Service:

technical@vectorlabs.com

Tel: +1 (800) 227-6666

www.everestbiotech.com

**Research Use Only. Not for
diagnostic or therapeutic use.**

EB09287 - Goat Anti-CST3 / cystatin C Antibody

Size: 100µg specific antibody in 200µl



Target Protein

Principal Names: CST3, cystatin C, ARMD11, MGC117328, OTTHUMP00000030440, OTTHUMP00000164181, OTTHUMP00000164182, bA218C14.4 (cystatin C), cystatin 3, cystatin C (amyloid angiopathy and cerebral hemorrhage), gamma-trace, neuroendocrine basic polypeptide, post-gamma-globulin

Official Symbol: CST3

Accession Number(s): NP_000090.1

Human GeneID(s): [1471](#)

Immunogen

Peptide with sequence C-SVEEEGVRRALD, from the internal region of the protein sequence according to NP_000090.1.

Please note the [peptide](#) is available for sale.

Purification and Storage

Purified from goat serum by ammonium sulphate precipitation followed by antigen affinity chromatography using the immunizing peptide.

Supplied at 0.5 mg/ml in Tris saline, 0.02% sodium azide, pH7.3 with 0.5% bovine serum albumin.

Aliquot and store at -20°C. Minimize freezing and thawing.

Applications Tested

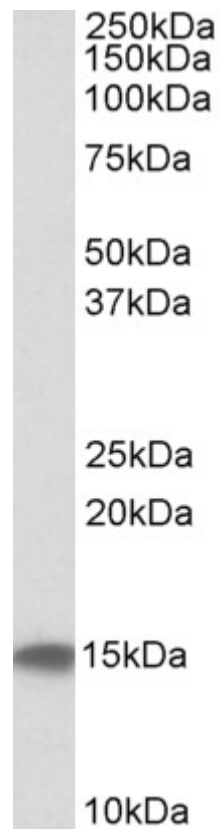
Peptide ELISA: antibody detection limit dilution 1:32000.

Western blot: Approx. 15kDa band observed in Human Testis and Prostate lysates (calculated MW of 15.8kDa according to NP_000090.1). Recommended concentration: 0.3-1µg/ml.

Species Reactivity

Tested: Human

Expected from sequence similarity: Human



EB09287 (0.1µg/ml) staining of Human Testis lysate (35µg protein in RIPA buffer). Primary incubation was 1 hour. Detected by chemiluminescence