



UK Office

Everest Biotech Ltd

Cherwell Innovation Centre
77 Heyford Park
Upper Heyford
Oxfordshire
OX25 5HD
UK

Enquiries:

info@everestbiotech.com

Sales:

sales@everestbiotech.com

Tech support:

support@everestbiotech.com

Tel: +44 (0)1869 238326

www.everestbiotech.com

**Research Use Only. Not for
diagnostic or therapeutic use.**

EB10070 - Goat Anti-CSTF3 Antibody

Size: 100µg specific antibody in 200µl



Target Protein

Principal Names: cleavage stimulation factor subunit 3, cleavage stimulation factor subunit 3, isoform 1, cleavage stimulation factor, 3' pre-RNA, subunit 3, 77kDa, CSTF 77 kDa subunit, CSTF-77, MGC117398, MGC43001, MGC75122, CSTF3

Official Symbol: CSTF3

Accession Number(s): NP_001317.1

Human GeneID(s): [1479](#)

Non-Human GeneID(s): 228410 (mouse), 362178 (rat)

Important Comments: This antibody is expected to recognize isoform 1 (NP_001317.1) only.

Immunogen

Peptide with sequence C-RETKGKLPSYKE, from the internal region of the protein sequence according to NP_001317.1.

Please note the [peptide](#) is available for sale.

Purification and Storage

Purified from goat serum by ammonium sulphate precipitation followed by antigen affinity chromatography using the immunizing peptide.

Supplied at 0.5 mg/ml in Tris saline, 0.02% sodium azide, pH7.3 with 0.5% bovine serum albumin.

Aliquot and store at -20°C. Minimize freezing and thawing.

Applications Tested

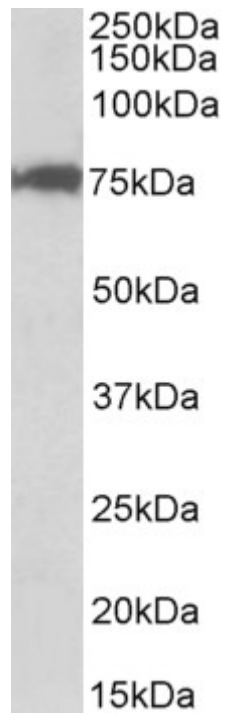
Peptide ELISA: antibody detection limit dilution 1:128000.

Western blot: Approx 75kDa band observed in nuclear lysates of cell line HeLa (calculated MW of 82.9kDa according to NP_001317.1). The observed molecular weight corresponds to the expected size of 77kDa. Recommended concentration: 0.03-0.1µg/ml.

Species Reactivity

Tested: Human

Expected from sequence similarity: Human, Mouse, Rat, Dog



EB10070 (0.1 μ g/ml) staining of nuclear HeLa lysate (35 μ g protein in RIPA buffer). Primary incubation was 1 hour. Detected by chemiluminescence.