



## UK Office

### Everest Biotech Ltd

Cherwell Innovation Centre  
77 Heyford Park  
Upper Heyford  
Oxfordshire  
OX25 5HD  
UK

Enquiries:

[info@everestbiotech.com](mailto:info@everestbiotech.com)

Sales:

[sales@everestbiotech.com](mailto:sales@everestbiotech.com)

Tech support:

[support@everestbiotech.com](mailto:support@everestbiotech.com)

Tel: +44 (0)1869 238326

[www.everestbiotech.com](http://www.everestbiotech.com)

**Research Use Only. Not for  
diagnostic or therapeutic use.**

## EB07996 - Goat Anti-CTCF Antibody

Size: 100µg specific antibody in 200µl



### Target Protein

**Principal Names:** CCCTC-binding factor (zinc finger protein), 11 zinc finger transcriptional repressor, 11-zinc finger protein, CTCFL paralog, transcriptional repressor CTCF

**Official Symbol:** CTCF

**Accession Number(s):** NP\_006556.1

**Human GeneID(s):** [10664](#)

**Non-Human GeneID(s):** 13018 (mouse), 83726 (rat)

### Immunogen

Peptide with sequence CHLPQNQTDGGE, from the internal region of the protein sequence according to NP\_006556.1 .

Please note the [peptide](#) is available for sale.

### Purification and Storage

Purified from goat serum by ammonium sulphate precipitation followed by antigen affinity chromatography using the immunizing peptide.

Supplied at 0.5 mg/ml in Tris saline, 0.02% sodium azide, pH7.3 with 0.5% bovine serum albumin.

Aliquot and store at -20°C. Minimize freezing and thawing.

### Applications Tested

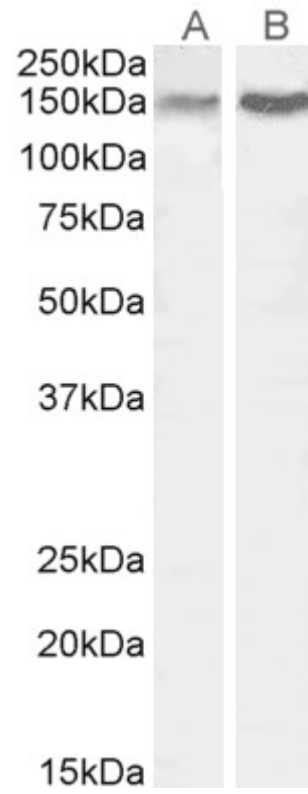
**Peptide ELISA:** antibody detection limit dilution 1:1000.

**Western blot:** Approx 150kDa band observed in lysates of cell line Jurkat and nuclear Jurkat (calculated MW of 82.8kDa according to NP\_006556.1). This molecular weight is routinely observed by other sources. Recommended concentration: 0.1-0.5µg/ml.

### Species Reactivity

**Tested:** Human

**Expected from sequence similarity:** Human, Mouse, Rat



EB07996 (0.3 $\mu$ g/ml) staining of Jurkat (A) cell lysate and (0.5 $\mu$ g/ml) Jurkat (B) nuclear cell lysate (35 $\mu$ g protein in RIPA buffer). Primary incubation was 1 hour. Detected by chemiluminescence