



UK Office

Everest Biotech Ltd

Cherwell Innovation Centre
77 Heyford Park
Upper Heyford
Oxfordshire
OX25 5HD
UK

Enquiries:

info@everestbiotech.com

Sales:

sales@everestbiotech.com

Tech support:

support@everestbiotech.com

Tel: +44 (0)1869 238326

Fax: +44 (0)1869 238327

US Office

Everest Biotech c/o Abcore

405 Maple Street, Suite A106
Ramona,
CA 92065
USA

Inquiries:

info@everestbiotech.com

Sales:

usasales@everestbiotech.com

Tech support:

support@everestbiotech.com

Tel: 888-320-4628 (toll-free)

Fax: 888-841-9041

www.everestbiotech.com

**Research Use Only. Not for
diagnostic or therapeutic use.**

EB06849 - Goat Anti-CTDSP1 Antibody

Size: 100µg specific antibody in 200µl



Target Protein

Principal Names: CTDSP1, SCP1, NLIIF, CTD (carboxy-terminal domain, RNA polymerase II, polypeptide A) small phosphatase 1, small CTD phosphatase 1, nuclear LIM interactor-interacting factor, Synaptonemal Complex Protein 1

Official Symbol: CTDSP1

Accession Number(s): NP_067021.1; NP_872580.1; NP_001193807.1

Human GeneID(s): [58190](#)

Non-Human GeneID(s): 227292 (mouse), 363249 (rat)

Important Comments: This antibody is expected to recognize all three reported isoforms (NP_067021.1; NP_872580.1; NP_001193807.1).

Immunogen

Peptide with sequence EAKAQDSDKIC, from the internal region of the protein sequence according to NP_067021.1; NP_872580.1; NP_001193807.1.

Please note the [peptide](#) is available for sale.

Purification and Storage

Purified from goat serum by ammonium sulphate precipitation followed by antigen affinity chromatography using the immunizing peptide.

Supplied at 0.5 mg/ml in Tris saline, 0.02% sodium azide, pH7.3 with 0.5% bovine serum albumin.

Aliquot and store at -20°C. Minimize freezing and thawing.

Applications Tested

Peptide ELISA: antibody detection limit dilution 1:16000.

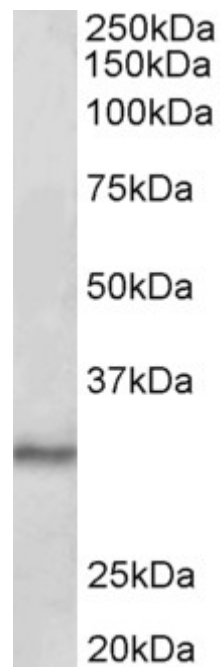
Western blot: Approx 30kDa band observed in Mouse Testis lysates (calculated MW of 29.3kDa according to Mouse NP_694728.1). Recommended concentration: 0.1-0.3µg/ml.

IHC: In paraffin embedded Human Tonsil shows nucleolar staining in select cells outside the follicles. Recommended concentration, 5-10µg/ml.

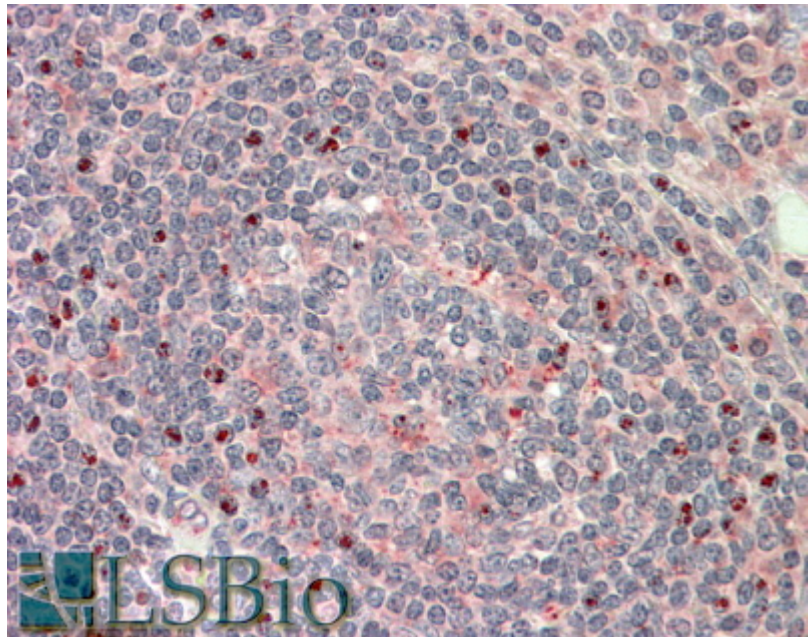
Species Reactivity

Tested: Human, Mouse

Expected from sequence similarity: Human, Mouse, Rat, Dog, Cow



EB06849 (0.1µg/ml) staining of Mouse Testis lysate (35µg protein in RIPA buffer). Primary incubation was 1 hour. Detected by chemiluminescence.



EB06849 (5µg/ml) staining of paraffin embedded Human Tonsil. Steamed antigen retrieval with citrate buffer pH 6, AP-staining.