

International Office

Everest Biotech Ltd

Vector Laboratories, Inc.
6737 Mowry Ave
Newark, CA 94560
United States

Customer Service:

customerservice@vectorlabs.com

Technical Service:

technical@vectorlabs.com

Tel: +1 (800) 227-6666

www.everestbiotech.com

**Research Use Only. Not for
diagnostic or therapeutic use.**

EB08525 - Goat Anti-CTDSPL Antibody

Size: 100µg specific antibody in 200µl



Target Protein

Principal Names: CTDSPL, CTD (carboxy-terminal domain, RNA polymerase II, polypeptide A) small phosphatase-like, C3orf8, HYA22, PSR1, SCP3, small CTD phosphatase 3

Official Symbol: CTDSPL

Accession Number(s): NP_001008393.1; NP_005799.2

Human GeneID(s): [10217](#)

Important Comments: This antibody is expected to recognise both isoforms (NP_001008393.1; NP_005799.2).

Immunogen

Peptide with sequence QCNVSLKKQRSRS, from the internal region of the protein sequence according to NP_001008393.1; NP_005799.2.

Please note the [peptide](#) is available for sale.

Purification and Storage

Purified from goat serum by ammonium sulphate precipitation followed by antigen affinity chromatography using the immunizing peptide.

Supplied at 0.5 mg/ml in Tris saline, 0.02% sodium azide, pH7.3 with 0.5% bovine serum albumin.

Aliquot and store at -20°C. Minimize freezing and thawing.

Applications Tested

Peptide ELISA: antibody detection limit dilution 1:32000.

Western blot: Preliminary testing showed a band at approx 28kDa in nuclear lysate of cell lines A431 and HeLa, after 1-2µg/ml antibody staining (calculated Mwt of 29.9kDa according to NP_005799.2). Primary incubation 1 hour at room temperature.

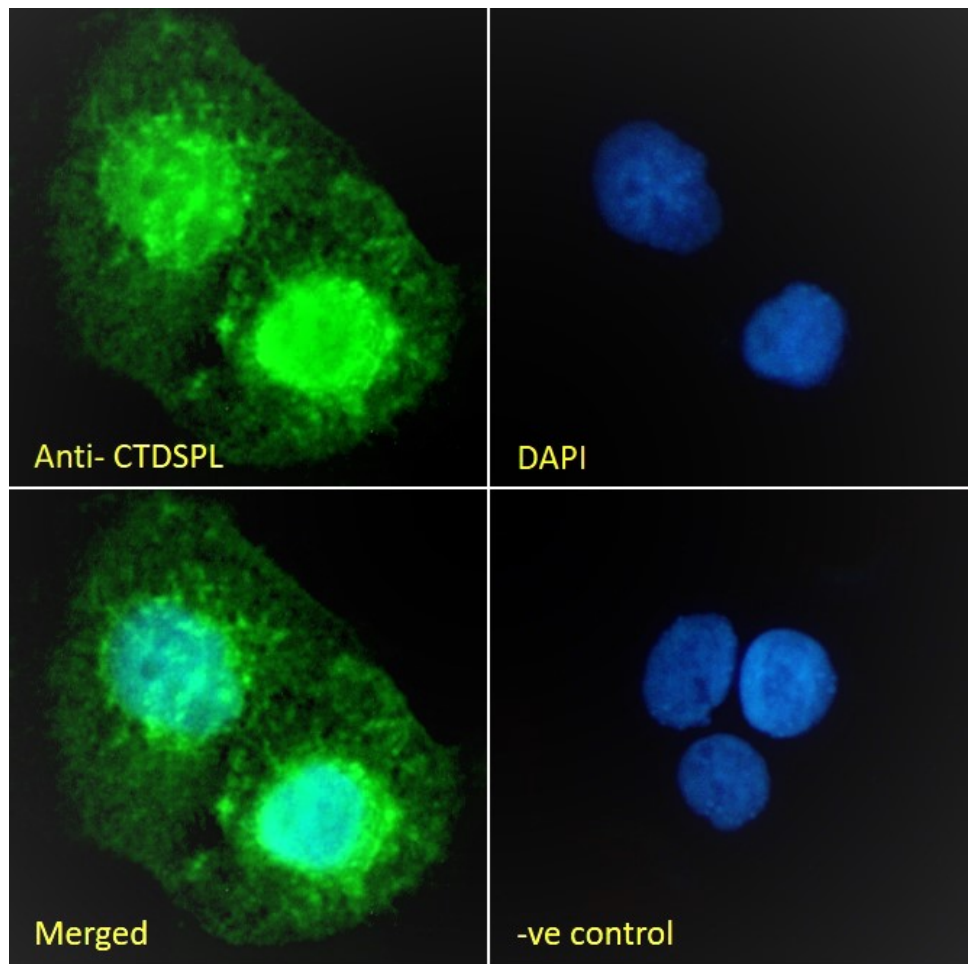
Immunofluorescence: Strong expression of the protein seen in the nuclei and vesicles of A431 cells. Recommended concentration: 10µg/ml.

Flow Cytometry: Flow cytometric analysis of A431 cells. Recommended concentration: 10ug/ml.

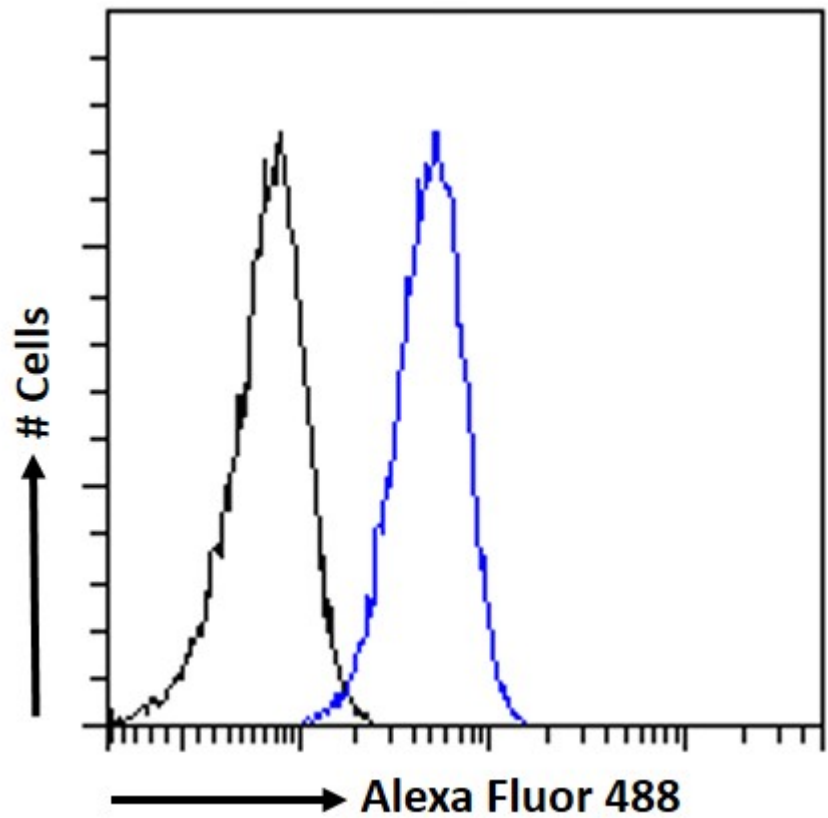
Species Reactivity

Tested: Human

Expected from sequence similarity: Human, Dog



EB08525 Immunofluorescence analysis of paraformaldehyde fixed A431 cells, permeabilized with 0.15% Triton. Primary incubation 1hr (10ug/ml) followed by Alexa Fluor 488 secondary antibody (2ug/ml), showing nuclear and vesicle staining. The nuclear stain is DAPI (blue). Negative control: Unimmunized goat IgG (10ug/ml) followed by Alexa Fluor 488 secondary antibody (2ug/ml).



EB08525 Flow cytometric analysis of paraformaldehyde fixed A431 cells (blue line), permeabilized with 0.5% Triton. Primary incubation 1hr (10ug/ml) followed by Alexa Fluor 488 secondary antibody (1ug/ml). IgG control: Unimmunized goat IgG (black line) followed by Alexa Fluor 488 secondary antibody.