



## International Office

### Everest Biotech Ltd

Vector Laboratories, Inc.  
6737 Mowry Ave  
Newark, CA 94560  
United States

Customer Service:

[customerservice@vectorlabs.com](mailto:customerservice@vectorlabs.com)

Technical Service:

[technical@vectorlabs.com](mailto:technical@vectorlabs.com)

Tel: +1 (800) 227-6666

[www.everestbiotech.com](http://www.everestbiotech.com)

**Research Use Only. Not for  
diagnostic or therapeutic use.**

## EB11761 - Goat Anti-CTGF (aa111-123) Antibody

Size: 100µg specific antibody in 200µl



### Target Protein

**Principal Names:** CCN family member 2, CCN2, connective tissue growth factor, CTGF, HCS24, hypertrophic chondrocyte-specific protein 24, IBP-8, IGF-binding protein 8, IGFBP8, IGFBP-8, insulin-like growth factor-binding protein 8, MGC102839, OTTHUMP00000017213, NOV2

**Official Symbol:** CTGF

**Accession Number(s):** NP\_001892.1

**Human GeneID(s):** [1490](#)

**Non-Human GeneID(s):** 14219 (mouse), 64032 (rat)

### Immunogen

Peptide with sequence RSGESFQSSCKYQ, from the internal region of the protein sequence according to NP\_001892.1.

Please note the [peptide](#) is available for sale.

### Purification and Storage

Purified from goat serum by ammonium sulphate precipitation followed by antigen affinity chromatography using the immunizing peptide.

Supplied at 0.5 mg/ml in Tris saline, 0.02% sodium azide, pH7.3 with 0.5% bovine serum albumin.

Aliquot and store at -20°C. Minimize freezing and thawing.

### Applications Tested

**Peptide ELISA:** antibody detection limit dilution 1:16000.

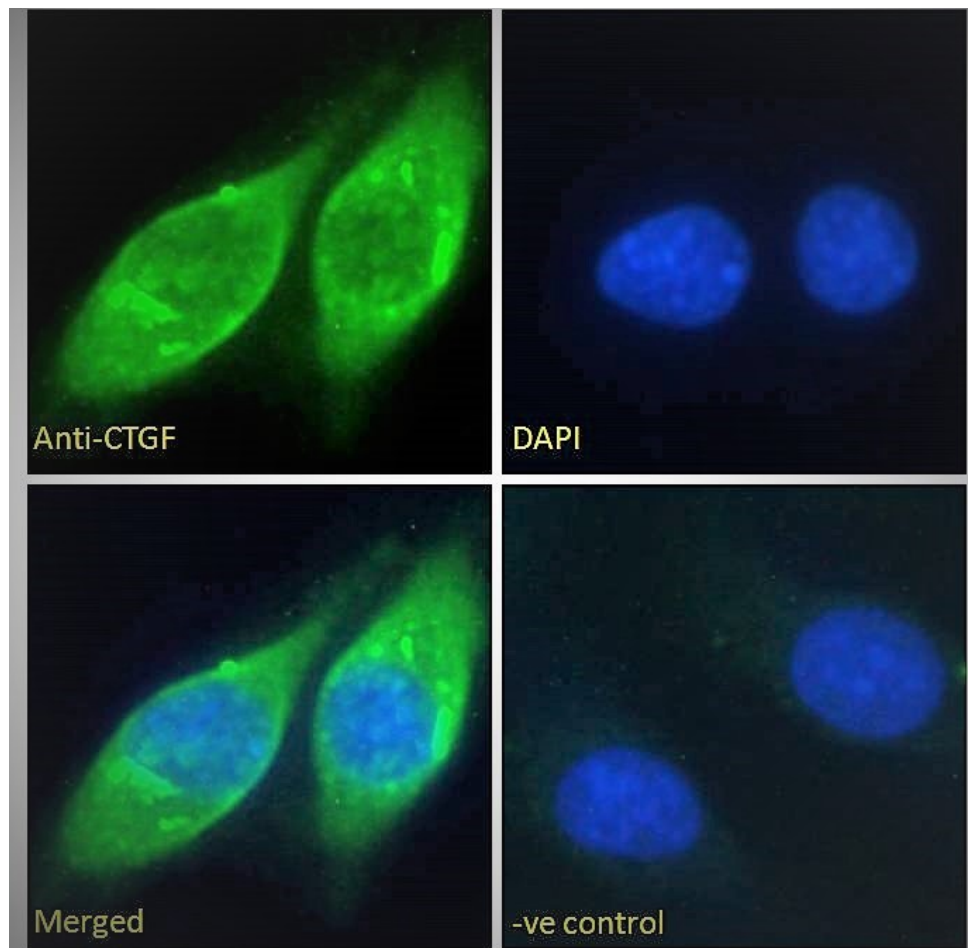
**IHC:** Paraffin embedded Human Thyroid. Recommended concentration: 5µg/ml.

**Immunofluorescence:** Strong expression of the protein seen in the cytoplasm of HepG2 and NIH3T3 cells. Recommended concentration: 10µg/ml.

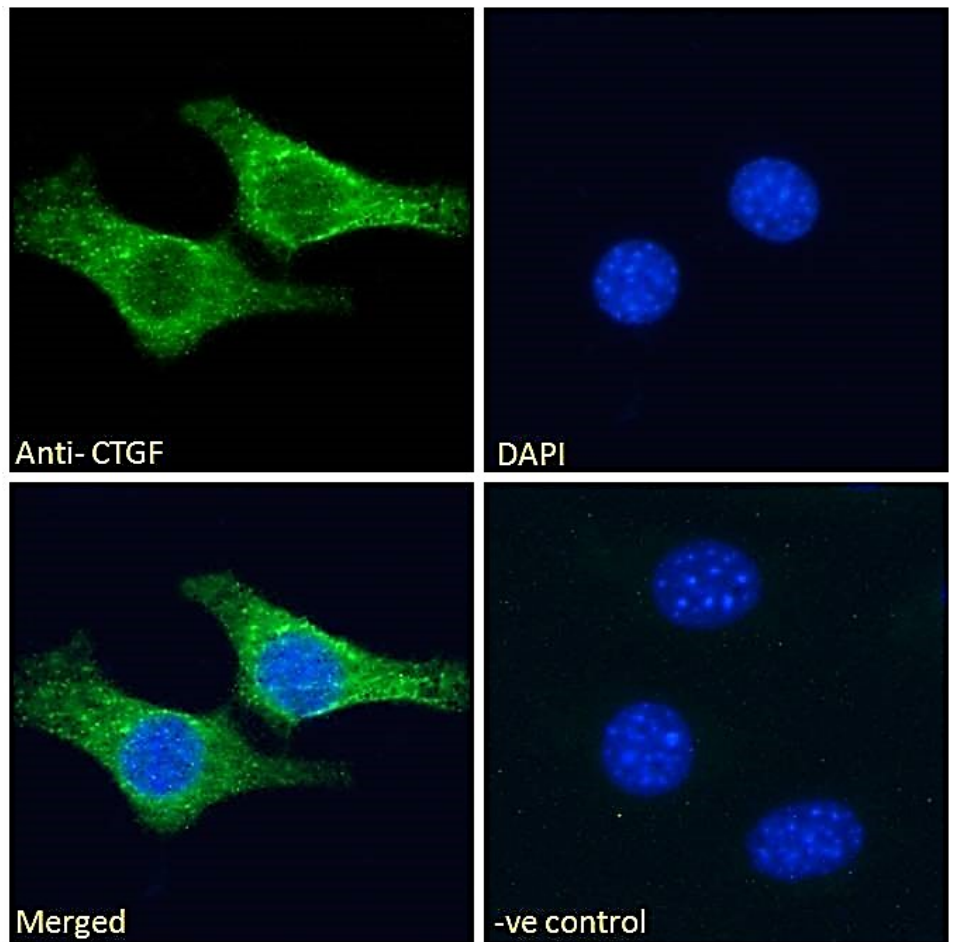
### Species Reactivity

**Tested:** Human, Mouse

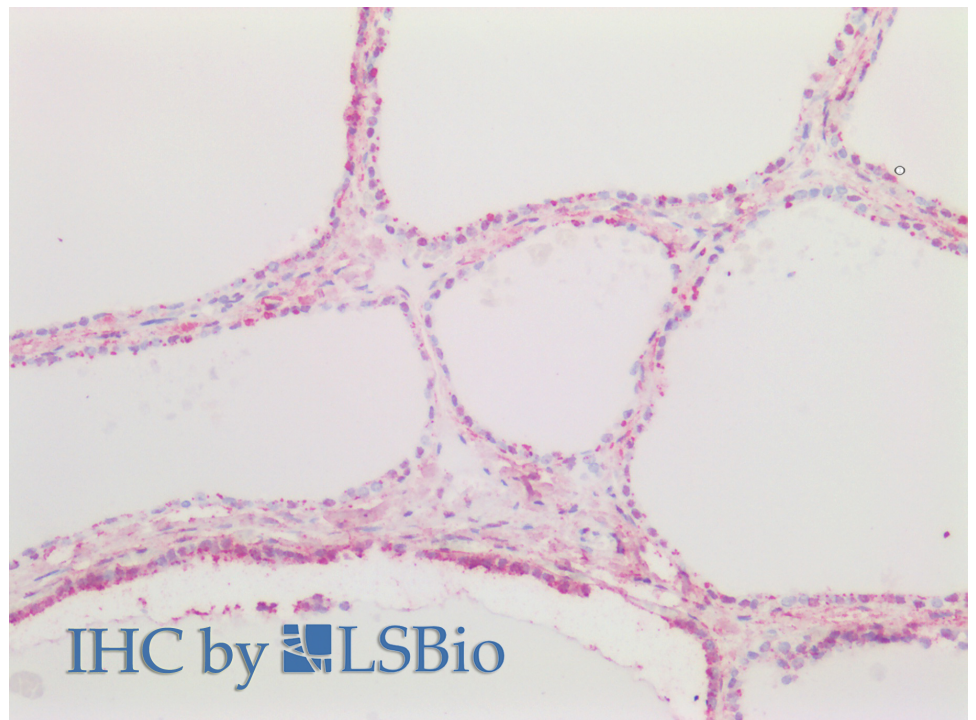
**Expected from sequence similarity:** Human, Mouse, Rat, Dog, Pig, Cow



EB11761 Immunofluorescence analysis of paraformaldehyde fixed HepG2 cells, permeabilized with 0.15% Triton. Primary incubation 1hr (10ug/ml) followed by Alexa Fluor 488 secondary antibody (2ug/ml), showing cytoplasmic staining. The nuclear stain is DAPI (blue). Negative control: Unimmunized goat IgG (10ug/ml) followed by Alexa Fluor 488 secondary antibody (2ug/ml).



EB11761 Immunofluorescence analysis of paraformaldehyde fixed NIH3T3 cells, permeabilized with 0.15% Triton. Primary incubation 1hr (10ug/ml) followed by Alexa Fluor 488 secondary antibody (2ug/ml), showing cytoplasmic staining. The nuclear stain is DAPI (blue). Negative control: Unimmunized goat IgG (10ug/ml) followed by Alexa Fluor 488 secondary antibody (2ug/ml).



EB11761 (5µg/ml) staining of paraffin embedded Human Thyroid. Steamed antigen retrieval with citrate buffer pH 6, AP-staining.