



## International Office

### Everest Biotech Ltd

Vector Laboratories, Inc.  
6737 Mowry Ave  
Newark, CA 94560  
United States

Customer Service:

[customerservice@vectorlabs.com](mailto:customerservice@vectorlabs.com)

Technical Service:

[technical@vectorlabs.com](mailto:technical@vectorlabs.com)

Tel: +1 (800) 227-6666

[www.everestbiotech.com](http://www.everestbiotech.com)

**Research Use Only. Not for  
diagnostic or therapeutic use.**

## EB12542 - Goat Anti-CTNNB1 / catenin beta-1 Antibody

Size: 100µg specific antibody in 200µl



### Target Protein

**Principal Names:** CTNNB1, catenin (cadherin-associated protein), beta 1, 88kDa, CTNNB, MRD19, armadillo, catenin beta-1

**Official Symbol:** CTNNB1

**Accession Number(s):** NP\_001895.1; NP\_001317658.1

**Human GeneID(s):** [1499](#)

**Non-Human GeneID(s):** 12387 (mouse), 84353 (rat)

**Important Comments:** Reported variants represent identical protein: NP\_001091679.1, NP\_001895.1, NP\_001091680.1.

### Immunogen

Peptide with sequence ETARCTAGTLHNLS, from the internal region of the protein sequence according to NP\_001895.1; NP\_001317658.1.

Please note the [peptide](#) is available for sale.

### Purification and Storage

Purified from goat serum by ammonium sulphate precipitation followed by antigen affinity chromatography using the immunizing peptide.

Supplied at 0.5 mg/ml in Tris saline, 0.02% sodium azide, pH7.3 with 0.5% bovine serum albumin.

Aliquot and store at -20°C. Minimize freezing and thawing.

### Applications Tested

**Peptide ELISA:** antibody detection limit dilution 1:128000.

**Western blot:** Approx 90kDa band observed in A431 cell lysates-and in preliminary testing of CACO2 cell lysate (calculated MW of 85.5kDa according to NP\_001895.1). This molecular weight is routinely observed by other sources. Recommended concentration: 0.1-0.3µg/ml. Primary incubation 1 hour at room temperature.

**Immunofluorescence:** Strong expression of the protein seen in the cytoplasm and membranes of U251 and A431 cells. Recommended concentration: 10µg/ml.

**Flow Cytometry:** Flow cytometric analysis of U251 cells. Recommended concentration: 10ug/ml.

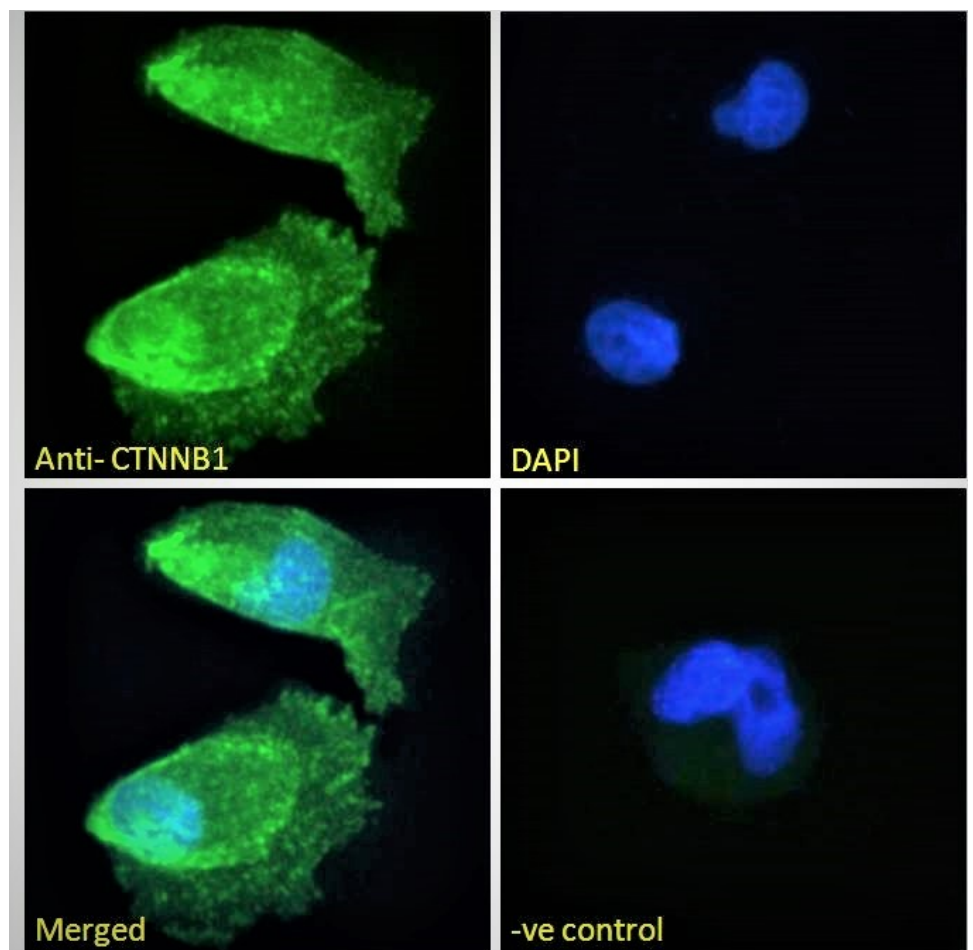
### Species Reactivity

**Tested:** Human

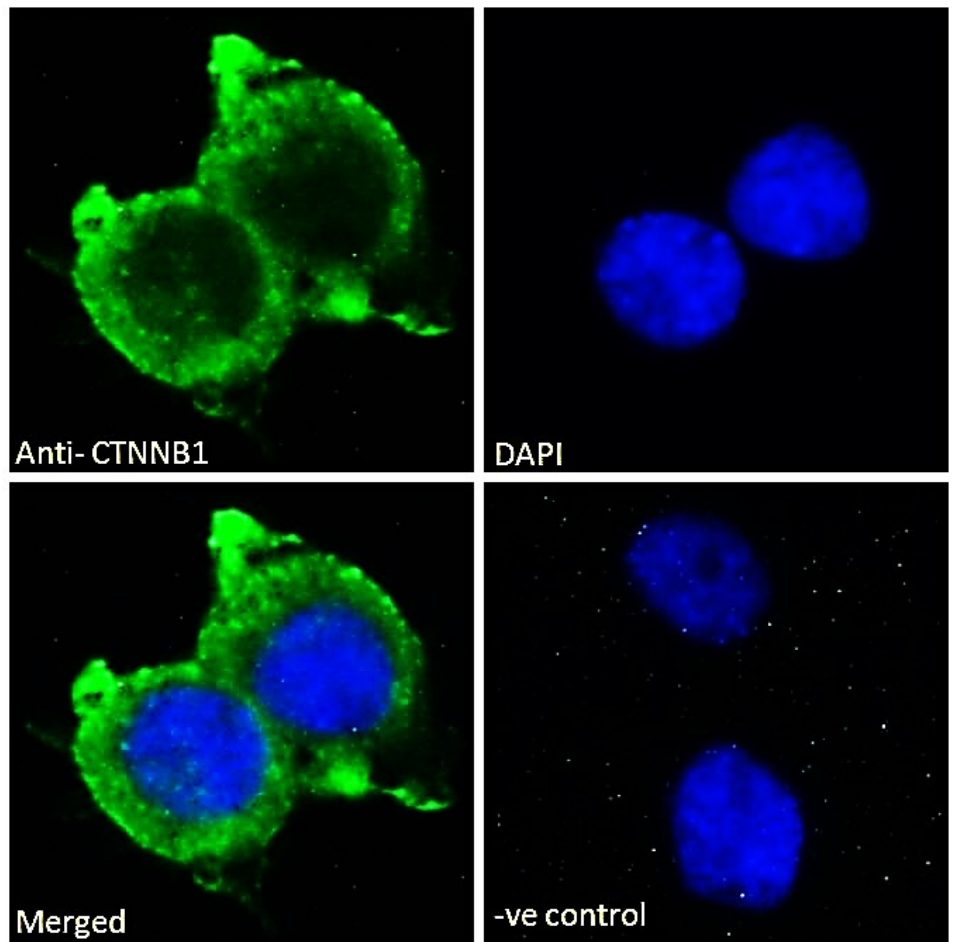
**Expected from sequence similarity:** Human, Mouse, Rat, Dog, Pig, Cow



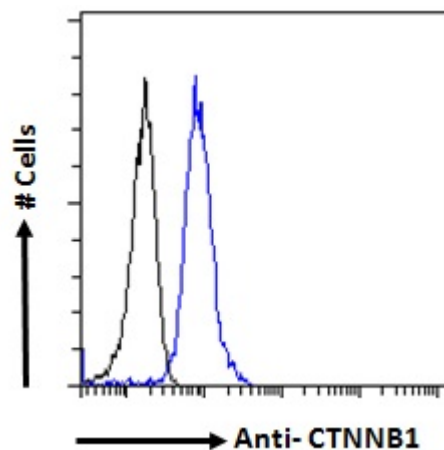
EB12542 (0.1µg/ml) staining of A431 cell lysate (35µg protein in RIPA buffer). Detected by chemiluminescence.



EB12542 Immunofluorescence analysis of paraformaldehyde fixed U251 cells, permeabilized with 0.15% Triton. Primary incubation 1hr (10ug/ml) followed by Alexa Fluor 488 secondary antibody (2ug/ml), showing cytoplasmic and membrane staining. The nuclear stain is DAPI (blue). Negative control: Unimmunized goat IgG (10ug/ml) followed by Alexa Fluor 488 secondary antibody (2ug/ml).



EB12542 Immunofluorescence analysis of paraformaldehyde fixed A431 cells, permeabilized with 0.15% Triton. Primary incubation 1hr (10ug/ml) followed by Alexa Fluor 488 secondary antibody (2ug/ml), showing membrane and cytoplasmic staining. The nuclear stain is DAPI (blue). Negative control: Unimmunized goat IgG (10ug/ml) followed by Alexa Fluor 488 secondary antibody (2ug/ml).



EB12542 Flow cytometric analysis of paraformaldehyde fixed U251 cells (blue line), permeabilized with 0.5% Triton. Primary incubation 1hr (10ug/ml) followed by Alexa Fluor 488 secondary antibody (1ug/ml). IgG control: Unimmunized goat IgG (black line) followed by Alexa Fluor 488 secondary antibody.