



UK Office

Everest Biotech Ltd

Cherwell Innovation Centre
77 Heyford Park
Upper Heyford
Oxfordshire
OX25 5HD
UK

Enquiries:

info@everestbiotech.com

Sales:

sales@everestbiotech.com

Tech support:

support@everestbiotech.com

Tel: +44 (0)1869 238326

Fax: +44 (0)1869 238327

US Office

Everest Biotech c/o Abcore

405 Maple Street, Suite A106
Ramona,
CA 92065
USA

Inquiries:

info@everestbiotech.com

Sales:

usasales@everestbiotech.com

Tech support:

support@everestbiotech.com

Tel: 888-320-4628 (toll-free)

Fax: 888-841-9041

www.everestbiotech.com

**Research Use Only. Not for
diagnostic or therapeutic use.**

EB10058 - Goat Anti-CUL2 Antibody

Size: 100µg specific antibody in 200µl



Target Protein

Principal Names: cullin 2, MGC131970, OTTHUMP00000019437, CUL2

Official Symbol: CUL2

Accession Number(s): NP_003582.2

Human GeneID(s): [8453](#)

Non-Human GeneID(s): 71745 (mouse), 361258 (rat)

Immunogen

Peptide with sequence C-QYIERSQASADE, from the C Terminus of the protein sequence according to NP_003582.2.

Please note the [peptide](#) is available for sale.

Purification and Storage

Purified from goat serum by ammonium sulphate precipitation followed by antigen affinity chromatography using the immunizing peptide.

Supplied at 0.5 mg/ml in Tris saline, 0.02% sodium azide, pH7.3 with 0.5% bovine serum albumin.

Aliquot and store at -20°C. Minimize freezing and thawing.

Applications Tested

Peptide ELISA: antibody detection limit dilution 1:8000.

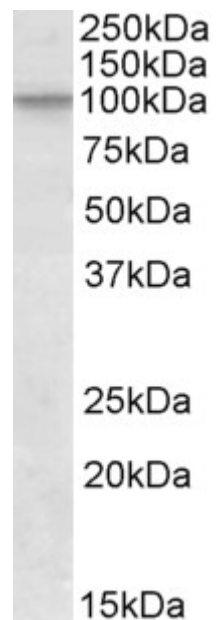
Western blot: Approx 100kDa band observed in lysates of cell line NIH3T3 (calculated MW of 87.0kDa according to Human NP_003582.2 and of 86.9kDa according to Mouse NP_083678.2). Recommended concentration: 1-3µg/ml. Primary incubation was 1 hour.

IHC: Paraffin embedded Human Breast. Recommended concentration: 3.75µg/ml.

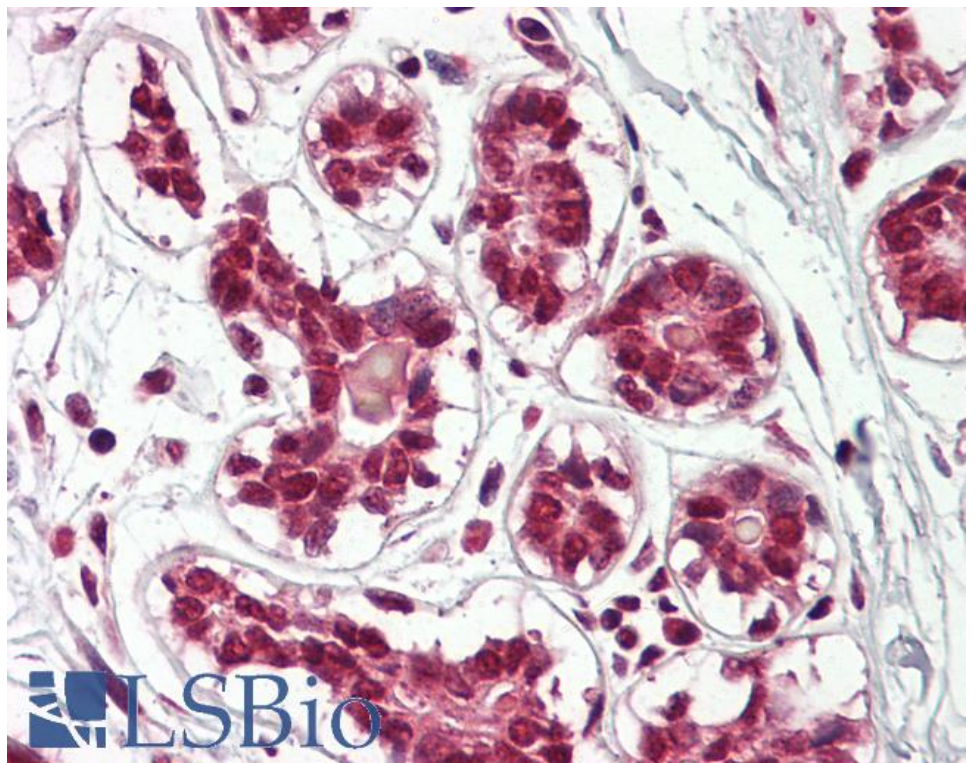
Species Reactivity

Tested: Human, Mouse

Expected from sequence similarity: Human, Mouse, Rat, Dog, Cow



EB10058 (1µg/ml) staining of NIH3T3 lysate (35µg protein in RIPA buffer). Detected by chemiluminescence.



EB10058 (3.75µg/ml) staining of paraffin embedded Human Breast. Steamed antigen retrieval with citrate buffer pH 6, AP-staining.