



## International Office

### Everest Biotech Ltd

Vector Laboratories, Inc.  
6737 Mowry Ave  
Newark, CA 94560  
United States

Customer Service:

[customerservice@vectorlabs.com](mailto:customerservice@vectorlabs.com)

Technical Service:

[technical@vectorlabs.com](mailto:technical@vectorlabs.com)

Tel: +1 (800) 227-6666

[www.everestbiotech.com](http://www.everestbiotech.com)

**Research Use Only. Not for  
diagnostic or therapeutic use.**

## EB12513 - Goat Anti-CX3CL1 / fractalkine (aa214-226) Antibody

Size: 100µg specific antibody in 200µl



### Target Protein

**Principal Names:** CX3CL1, chemokine (C-X3-C motif) ligand 1, ABCD-3, C3Xkine, CXC3, CXC3C, NTN, NTT, SCYD1, fractalkine, neurotactin, C-X3-C motif chemokine 1, CX3C membrane-anchored chemokine, small inducible cytokine subfamily D (Cys-X3-Cys), member 1 (fract

**Official Symbol:** CX3CL1

**Accession Number(s):** NP\_002987.1

**Human GeneID(s):** [6376](#)

### Immunogen

Peptide with sequence C-KTSEAPSTQDPST, from the internal region of the protein sequence according to NP\_002987.1.

Please note the [peptide](#) is available for sale.

### Purification and Storage

Purified from goat serum by ammonium sulphate precipitation followed by antigen affinity chromatography using the immunizing peptide.

Supplied at 0.5 mg/ml in Tris saline, 0.02% sodium azide, pH7.3 with 0.5% bovine serum albumin.

Aliquot and store at -20°C. Minimize freezing and thawing.

### Applications Tested

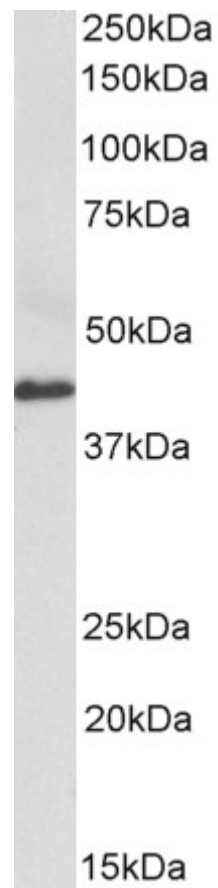
**Peptide ELISA:** antibody detection limit dilution 1:128000.

**Western blot:** Approx 45kDa band observed in Human Colorectal cancer lysates (calculated MW of 42.2kDa according to NP\_002987.1). Recommended concentration: 0.3-1µg/ml.

### Species Reactivity

**Tested:** Human

**Expected from sequence similarity:** Human



EB12513 (0.3 $\mu$ g/ml) staining of Human Colorectal cancer lysate (35 $\mu$ g protein in RIPA buffer). Primary incubation was 1 hour. Detected by chemiluminescence.