

UK Office

Everest Biotech Ltd

Cherwell Innovation Centre
77 Heyford Park
Upper Heyford
Oxfordshire
OX25 5HD
UK

Enquiries:

info@everestbiotech.com

Sales:

sales@everestbiotech.com

Tech support:

support@everestbiotech.com

Tel: +44 (0)1869 238326

www.everestbiotech.com

**Research Use Only. Not for
diagnostic or therapeutic use.**

EB09352 - Goat Anti-CXCL2 / MIP-2 Antibody

Size: 100µg specific antibody in 200µl



Target Protein

Principal Names: CXCL2, chemokine (C-X-C motif) ligand 2, CINC-2a, GRO2, GROb, MGSA-b, MIP-2a, MIP2, MIP2A, SCYB2, GRO2 oncogene, MGSA beta, melanoma growth stimulatory activity beta

Official Symbol: CXCL2

Accession Number(s): NP_002080.1

Human GeneID(s): [2920](#)

Immunogen

Peptide with sequence C-KKIIEKMLKNGKSN, from the C Terminus of the protein sequence according to NP_002080.1.

Please note the [peptide](#) is available for sale.

Purification and Storage

Purified from goat serum by ammonium sulphate precipitation followed by antigen affinity chromatography using the immunizing peptide.

Supplied at 0.5 mg/ml in Tris saline, 0.02% sodium azide, pH7.3 with 0.5% bovine serum albumin.

Aliquot and store at -20°C. Minimize freezing and thawing.

Applications Tested

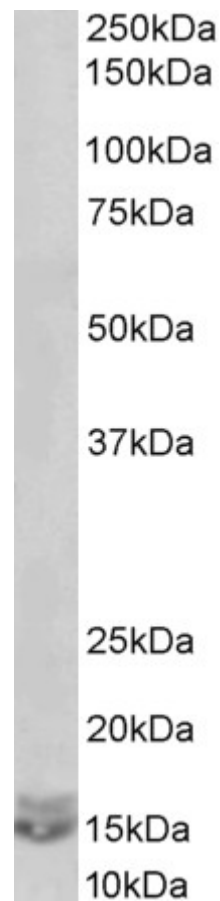
Peptide ELISA: antibody detection limit dilution 1:32000.

Western blot: Approx 15kDa band observed in in lysates of cell line Daudi (calculated MW of 11.4kDa according to NP_002080.1). Recommended concentration: 0.03-0.1µg/ml. Approx 17Da band observed in Human Duodenum lysates (calculated MW of 11.4kDa according to NP_002080.1).

Species Reactivity

Tested: Human

Expected from sequence similarity: Human



EB09352 (0.03µg/ml) staining of Daudi lysate (35µg protein in RIPA buffer). Primary incubation was 1 hour. Detected by chemiluminescence



EB09352 (0.2µg/ml) staining of Human Duodenum lysate (35µg protein in RIPA buffer). Primary incubation was 1 hour. Detected by chemiluminescence