



UK Office

Everest Biotech Ltd

Cherwell Innovation Centre
77 Heyford Park
Upper Heyford
Oxfordshire
OX25 5HD
UK

Enquiries:

info@everestbiotech.com

Sales:

sales@everestbiotech.com

Tech support:

support@everestbiotech.com

Tel: +44 (0)1869 238326

www.everestbiotech.com

**Research Use Only. Not for
diagnostic or therapeutic use.**

EB09999 - Goat Anti-CXCR6 Antibody

Size: 100µg specific antibody in 200µl



Target Protein

Principal Names: BONZO, CD186, chemokine (C-X-C motif) receptor 6, G protein-coupled receptor, G protein-coupled receptor TYMSTR, OTTHUMP00000209996, OTTHUMP00000209997, OTTHUMP00000209998, STRL33, TYMSTR, CXCR6

Official Symbol: CXCR6

Accession Number(s): NP_006555.1

Human GeneID(s): [10663](#)

Non-Human GeneID(s): 80901 (mouse), 100124593 (rat)

Immunogen

Peptide with sequence C-SEDNSKTF SASHN, from the C Terminus of the protein sequence according to NP_006555.1.

Please note the [peptide](#) is available for sale.

Purification and Storage

Purified from goat serum by ammonium sulphate precipitation followed by antigen affinity chromatography using the immunizing peptide.

Supplied at 0.5 mg/ml in Tris saline, 0.02% sodium azide, pH7.3 with 0.5% bovine serum albumin.

Aliquot and store at -20°C. Minimize freezing and thawing.

Applications Tested

Peptide ELISA: antibody detection limit dilution 1:2000.

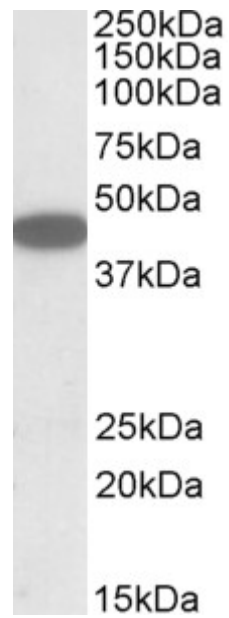
Western blot: Approx 40-45kDa band observed in HEK293 lysates (calculated MW of 39.3kDa according to NP_006555.1). Recommended concentration: 0.3-1µg/ml.

IHC: Paraffin embedded Human Thymus. Recommended concentration: 3.75µg/ml.

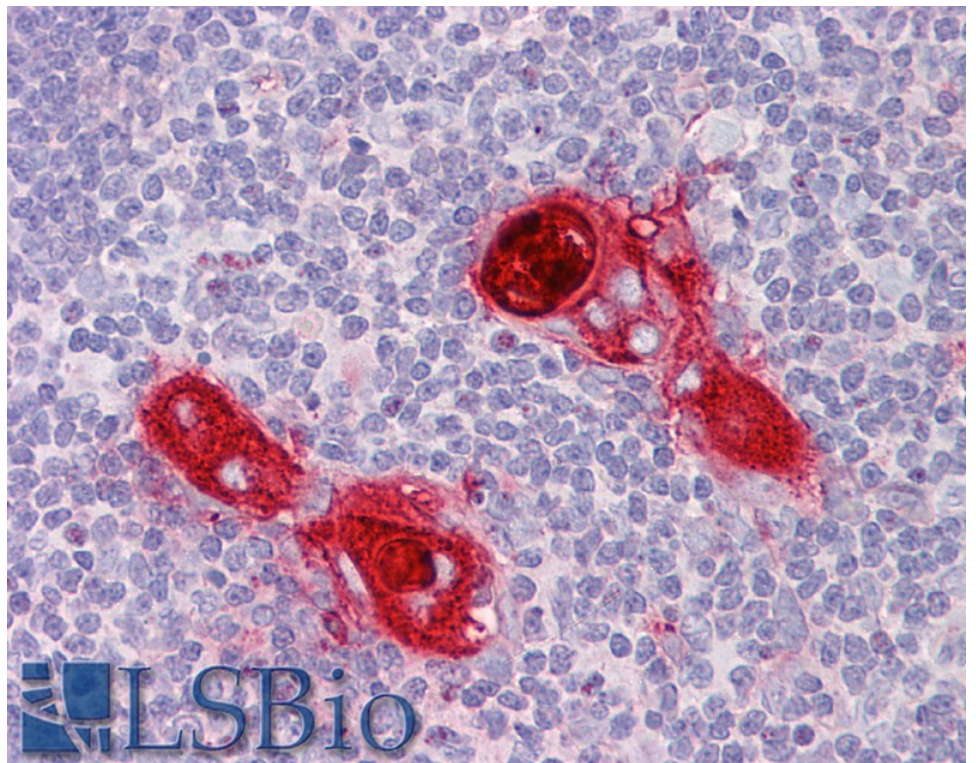
Species Reactivity

Tested: Human

Expected from sequence similarity: Human, Mouse, Rat, Dog



EB09999 (1 μ g/ml) staining of HEK293 lysate (35 μ g protein in RIPA buffer). Primary incubation was 1 hour. Detected by chemiluminescence.



EB09999 (3.75 μ g/ml) staining of paraffin embedded Human Thymus. Steamed antigen retrieval with citrate buffer pH 6, AP-staining.