



## UK Office

### Everest Biotech Ltd

Cherwell Innovation Centre  
77 Heyford Park  
Upper Heyford  
Oxfordshire  
OX25 5HD  
UK

Enquiries:

[info@everestbiotech.com](mailto:info@everestbiotech.com)

Sales:

[sales@everestbiotech.com](mailto:sales@everestbiotech.com)

Tech support:

[support@everestbiotech.com](mailto:support@everestbiotech.com)

Tel: +44 (0)1869 238326

Fax: +44 (0)1869 238327

## US Office

### Everest Biotech c/o Abcore

405 Maple Street, Suite A106  
Ramona,  
CA 92065  
USA

Inquiries:

[info@everestbiotech.com](mailto:info@everestbiotech.com)

Sales:

[usasales@everestbiotech.com](mailto:usasales@everestbiotech.com)

Tech support:

[support@everestbiotech.com](mailto:support@everestbiotech.com)

Tel: 888-320-4628 (toll-free)

Fax: 888-841-9041

[www.everestbiotech.com](http://www.everestbiotech.com)

**Research Use Only. Not for  
diagnostic or therapeutic use.**

## EB09999 - Goat Anti-CXCR6 Antibody

Size: 100µg specific antibody in 200µl



### Target Protein

**Principal Names:** BONZO, CD186, chemokine (C-X-C motif) receptor 6, G protein-coupled receptor, G protein-coupled receptor TYMSTR, OTTHUMP00000209996, OTTHUMP00000209997, OTTHUMP00000209998, STRL33, TYMSTR, CXCR6

**Official Symbol:** CXCR6

**Accession Number(s):** NP\_006555.1

**Human GeneID(s):** [10663](#)

**Non-Human GeneID(s):** 80901 (mouse), 100124593 (rat)

### Immunogen

Peptide with sequence C-SEDNSKTFSSASHN, from the C Terminus of the protein sequence according to NP\_006555.1.

Please note the [peptide](#) is available for sale.

### Purification and Storage

Purified from goat serum by ammonium sulphate precipitation followed by antigen affinity chromatography using the immunizing peptide.

Supplied at 0.5 mg/ml in Tris saline, 0.02% sodium azide, pH7.3 with 0.5% bovine serum albumin.

Aliquot and store at -20°C. Minimize freezing and thawing.

### Applications Tested

**Peptide ELISA:** antibody detection limit dilution 1:2000.

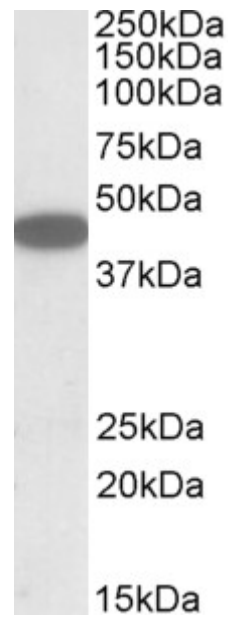
**Western blot:** Approx 40-45kDa band observed in HEK293 lysates (calculated MW of 39.3kDa according to NP\_006555.1). Recommended concentration: 0.3-1µg/ml.

**IHC:** Paraffin embedded Human Thymus. Recommended concentration: 3.75µg/ml.

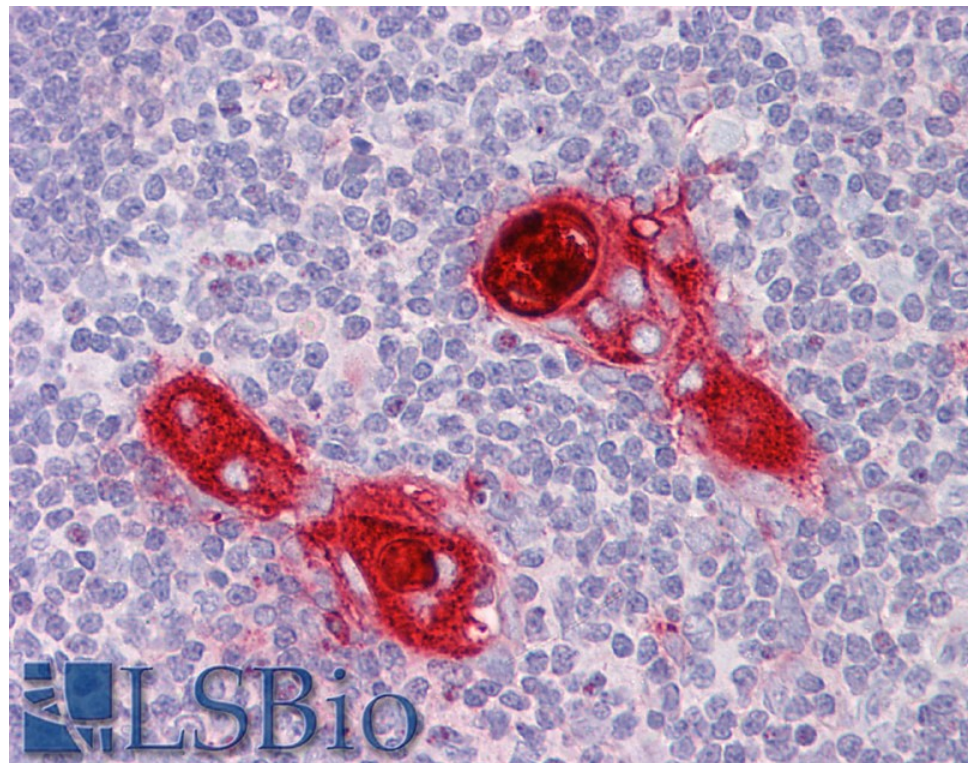
### Species Reactivity

**Tested:** Human

**Expected from sequence similarity:** Human, Mouse, Rat, Dog



EB09999 (1 $\mu$ g/ml) staining of HEK293 lysate (35 $\mu$ g protein in RIPA buffer). Primary incubation was 1 hour. Detected by chemiluminescence.



EB09999 (3.75 $\mu$ g/ml) staining of paraffin embedded Human Thymus. Steamed antigen retrieval with citrate buffer pH 6, AP-staining.