



UK Office

Everest Biotech Ltd

Cherwell Innovation Centre
77 Heyford Park
Upper Heyford
Oxfordshire
OX25 5HD
UK

Enquiries:

info@everestbiotech.com

Sales:

sales@everestbiotech.com

Tech support:

support@everestbiotech.com

Tel: +44 (0)1869 238326

www.everestbiotech.com

**Research Use Only. Not for
diagnostic or therapeutic use.**

EB05655 - Goat Anti-CYB561D2 Antibody

Size: 100µg specific antibody in 200µl



Target Protein

Principal Names: CYB561D2, cytochrome b-561 domain containing 2, putative tumor suppressor 101F6, TSP10, OTTHUMP00000210675, OTTHUMP00000210676, OTTHUMP0000021067

Official Symbol: CYB561D2

Accession Number(s): NP_008953.1

Human GeneID(s): [11068](#)

Non-Human GeneID(s): 56368 (mouse)

Immunogen

Peptide with sequence C-VSNAYLYRKRIQP, from the C Terminus of the protein sequence according to NP_008953.1.

Please note the [peptide](#) is available for sale.

Purification and Storage

Purified from goat serum by ammonium sulphate precipitation followed by antigen affinity chromatography using the immunizing peptide.

Supplied at 0.5 mg/ml in Tris saline, 0.02% sodium azide, pH7.3 with 0.5% bovine serum albumin.

Aliquot and store at -20°C. Minimize freezing and thawing.

Applications Tested

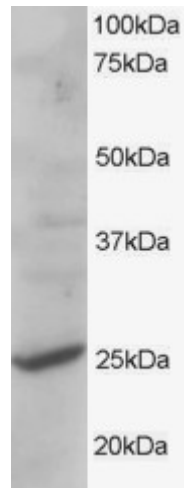
Peptide ELISA: antibody detection limit dilution 1:16000.

Western blot: Approx 25kDa band observed in human liver lysates (predicted MW of 26kDa according to NP_008953). Recommended for use at 1-3µg/ml.

Species Reactivity

Tested: Human

Expected from sequence similarity: Human, Mouse, Rat, Dog, Cow



EB05655 staining (1 μ g/ml) of human liver lysate (RIPA buffer, 35 μ g total protein per lane). Primary incubated for 1 hour. Detected by western blot using chemiluminescence.