



UK Office

Everest Biotech Ltd

Cherwell Innovation Centre
77 Heyford Park
Upper Heyford
Oxfordshire
OX25 5HD
UK

Enquiries:

info@everestbiotech.com

Sales:

sales@everestbiotech.com

Tech support:

support@everestbiotech.com

Tel: +44 (0)1869 238326

Fax: +44 (0)1869 238327

US Office

Everest Biotech c/o Abcore

405 Maple Street, Suite A106
Ramona,
CA 92065
USA

Inquiries:

info@everestbiotech.com

Sales:

usasales@everestbiotech.com

Tech support:

support@everestbiotech.com

Tel: 888-320-4628 (toll-free)

Fax: 888-841-9041

www.everestbiotech.com

**Research Use Only. Not for
diagnostic or therapeutic use.**

EB10696 - Goat Anti-CYB5R3 / Dia 1 Antibody

Size: 100µg specific antibody in 200µl



Target Protein

Principal Names: CYB5R3, cytochrome b5 reductase 3, B5R, DIA1, NADH-cytochrome b5 reductase 3, NADH-cytochrome b5 reductase 3 membrane-bound form, NADH-cytochrome b5 reductase 3 soluble form, OTTHUMP00000198574, OTTHUMP00000198665

Official Symbol: CYB5R3

Accession Number(s): NP_000389.1; NP_001123291.1; NP_001165131.1

Human GeneID(s): [1727](#)

Important Comments: This antibody is expected to recognize all three reported isoforms (NP_000389.1; NP_001123291.1; NP_001165131.1).

Immunogen

Peptide with sequence CLPNLDHVGHPTEP, from the C Terminus of the protein sequence according to NP_000389.1; NP_001123291.1; NP_001165131.1.

Please note the [peptide](#) is available for sale.

Purification and Storage

Purified from goat serum by ammonium sulphate precipitation followed by antigen affinity chromatography using the immunizing peptide.

Supplied at 0.5 mg/ml in Tris saline, 0.02% sodium azide, pH7.3 with 0.5% bovine serum albumin.

Aliquot and store at -20°C. Minimize freezing and thawing.

Applications Tested

Peptide ELISA: antibody detection limit dilution 1:32000.

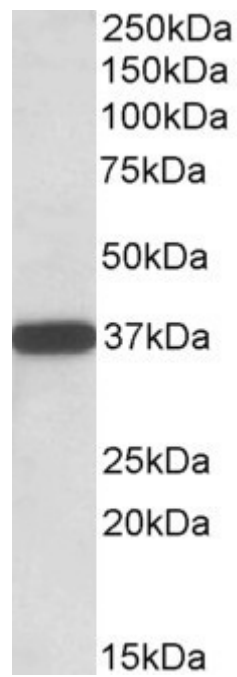
Western blot: Approx 37kDa band observed in Human Placenta, Testis and Umbilical Cord lysates (calculated MW of 38.2kDa according to NP_001165131.1). Recommended concentration: 0.01-0.03µg/ml.

IHC: In paraffin embedded Human Adrenal Gland shows heavy vesicular/granular staining in the cytoplasm of medullary cells. Recommended concentration, 3-5µg/ml.

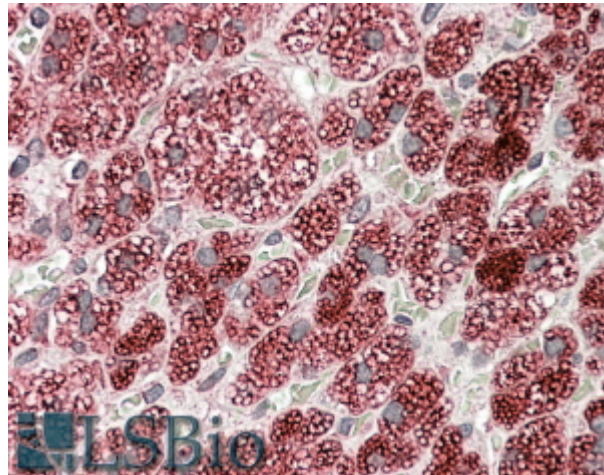
Species Reactivity

Tested: Human

Expected from sequence similarity: Human



EB10696 (0.01 μ g/ml) staining of Human Umbilical Cord lysate (35 μ g protein in RIPA buffer). Primary incubation was 1 hour. Detected by chemiluminescence.



EB10696 (3.8 μ g/ml) staining of paraffin embedded Human Adrenal Gland. Steamed antigen retrieval with citrate buffer pH 6, AP-staining.