



UK Office

Everest Biotech Ltd

Cherwell Innovation Centre
77 Heyford Park
Upper Heyford
Oxfordshire
OX25 5HD
UK

Enquiries:

info@everestbiotech.com

Sales:

sales@everestbiotech.com

Tech support:

support@everestbiotech.com

Tel: +44 (0)1869 238326

Fax: +44 (0)1869 238327

US Office

Everest Biotech c/o Abcore

405 Maple Street, Suite A106
Ramona,
CA 92065
USA

Inquiries:

info@everestbiotech.com

Sales:

usasales@everestbiotech.com

Tech support:

support@everestbiotech.com

Tel: 888-320-4628 (toll-free)

Fax: 888-841-9041

www.everestbiotech.com

**Research Use Only. Not for
diagnostic or therapeutic use.**

EB09614 - Goat Anti-CYB5R3 / Dia 1 (mouse) Antibody

Size: 100µg specific antibody in 200µl



Target Protein

Principal Names: Cyb5r3, cytochrome b5 reductase 3, 0610016L08Rik, 2500002N19Rik, C85115, Dia-1, Dia1, WU:AL591952.1-001, WU:AL591952.1-002, WU:AL591952.1-003, WU:Cyb5r3, NADH-cytochrome b5 reductase, diaphorase 1, diaphorase 1 (NADH)

Official Symbol: Cyb5r3

Accession Number(s): NP_084063.1

Non-Human GeneID(s): 109754 (mouse), 25035 (rat)

Immunogen

Peptide with sequence PNLERVGHPKERC, from the C Terminus of the protein sequence according to NP_084063.1.

Please note the [peptide](#) is available for sale.

Purification and Storage

Purified from goat serum by ammonium sulphate precipitation followed by antigen affinity chromatography using the immunizing peptide.

Supplied at 0.5 mg/ml in Tris saline, 0.02% sodium azide, pH7.3 with 0.5% bovine serum albumin.

Aliquot and store at -20°C. Minimize freezing and thawing.

Applications Tested

Peptide ELISA: antibody detection limit dilution 1:32000.

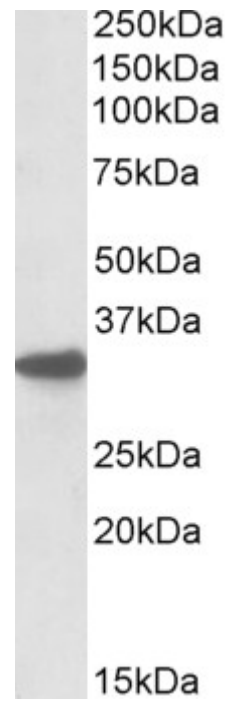
Western blot: Approx 35kDa band observed in Mouse Liver lysates as well as in mouse and rat brain lysates (calculated MW of 34.1kDa according to mouse NP_084063.1).

Recommended concentration: 0.1-1µg/ml.

Species Reactivity

Tested: Mouse

Expected from sequence similarity: Mouse, Rat, Dog, Cow



EB09614 (0.1 μ g/ml) staining of Mouse Liver lysate (RIPA buffer, 35 μ g total protein per lane). Primary incubated for 1 hour. Detected by western blot using chemiluminescence.