



UK Office

Everest Biotech Ltd

Cherwell Innovation Centre
77 Heyford Park
Upper Heyford
Oxfordshire
OX25 5HD
UK

Enquiries:

info@everestbiotech.com

Sales:

sales@everestbiotech.com

Tech support:

support@everestbiotech.com

Tel: +44 (0)1869 238326

www.everestbiotech.com

**Research Use Only. Not for
diagnostic or therapeutic use.**

EB11476 - Goat Anti-Cyb5r4 (mouse aa444-458) Antibody

Size: 100µg specific antibody in 200µl



Target Protein

Principal Names: 2810034J18Rik, b5/b5r, B5+B5R, b5b5r, C79736, cb5/cb5R, Cb5cb5r, Cyb5r4, cytochrome b5 reductase 4, cytochrome b-type NAD(P)H oxidoreductase, flavohemoprotein b5/b5R, NADPH cytochrome B5 oxidoreductase, Ncb5or, N-terminal cytochrome b5 and cytochrome b5 oxidoreductase domain-containing protein

Official Symbol: Cyb5r4

Accession Number(s): NP_077157.2

Non-Human GeneID(s): 266690 (mouse)

Immunogen

Peptide with sequence RCQLEKLALREKRFD, from the internal region of the protein sequence according to NP_077157.2.

Please note the [peptide](#) is available for sale.

Purification and Storage

Purified from goat serum by ammonium sulphate precipitation followed by antigen affinity chromatography using the immunizing peptide.

Supplied at 0.5 mg/ml in Tris saline, 0.02% sodium azide, pH7.3 with 0.5% bovine serum albumin.

Aliquot and store at -20°C. Minimize freezing and thawing.

Applications Tested

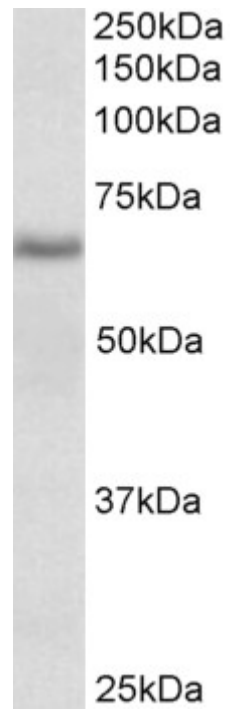
Peptide ELISA: antibody detection limit dilution 1:64000.

Western blot: Approx 65kDa band observed in Rat Spleen lysates (calculated MW of 55kDa according to NP_596918.2 and 58.8kDa according to Q68EJ0-1). Recommended concentration: 0.1-0.3µg/ml.

Species Reactivity

Tested: Rat

Expected from sequence similarity: Mouse, Rat



EB11476 (0.1 $\mu\text{g}/\text{ml}$) staining of Rat Spleen lysate (35 μg protein in RIPA buffer). Primary incubation was 1 hour.
Detected by chemiluminescence.