

## UK Office

### Everest Biotech Ltd

Cherwell Innovation Centre  
77 Heyford Park  
Upper Heyford  
Oxfordshire  
OX25 5HD  
UK

Enquiries:

[info@everestbiotech.com](mailto:info@everestbiotech.com)

Sales:

[sales@everestbiotech.com](mailto:sales@everestbiotech.com)

Tech support:

[support@everestbiotech.com](mailto:support@everestbiotech.com)

Tel: +44 (0)1869 238326

[www.everestbiotech.com](http://www.everestbiotech.com)

**Research Use Only. Not for  
diagnostic or therapeutic use.**

## EB05366 - Goat Anti-CYBR / PSCDBP Antibody

Size: 100µg specific antibody in 200µl



### Target Protein

**Principal Names:** CYTIP, PSCDBP, CYBR, pleckstrin homology, Sec7 and coiled/coil domains, binding protein, HE, B3-1, CASP, cytohesin binding protein HE, cytohesin-1 interacting protein, pleckstrin homology, Sec7, and coiled-coil domains protein-binding protein, cytohesin 1 interacting protein, cytohesin binder and regulator, pleckstrin homology, Sec7 and coiled-coil domains, binding protein, pleckstrin homology, Sec7 and coiled/coil domains, binding protein

**Official Symbol:** CYTIP

**Accession Number(s):** NP\_004279.3

**Human GeneID(s):** [9595](#)

### Immunogen

Peptide with sequence SLQRLLQHSSNGN-C, from the N Terminus of the protein sequence according to NP\_004279.3.

Please note the [peptide](#) is available for sale.

### Purification and Storage

Purified from goat serum by ammonium sulphate precipitation followed by antigen affinity chromatography using the immunizing peptide.

Supplied at 0.5 mg/ml in Tris saline, 0.02% sodium azide, pH7.3 with 0.5% bovine serum albumin.

Aliquot and store at -20°C. Minimize freezing and thawing.

### Applications Tested

**Peptide ELISA:** antibody detection limit dilution 1:16000.

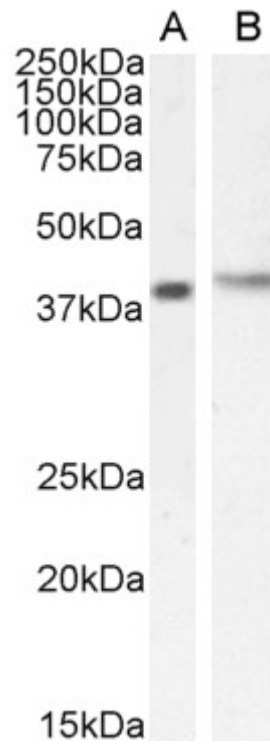
**Western blot:** Approx 38kDa band observed in lysates of cell line Jurkat and approx 40kDa in ysates of cell line MOLT4 (calculated MW of 40kDa according to NP\_004279.3). Recommended concentration: 0.3-1µg/ml. Primary incubation 1 hour at room temperature.

**Immunofluorescence:** Expression of the protein seen in the cytoplasm and nucleus of A431 and U251 cells. Recommended concentration: 10µg/ml.

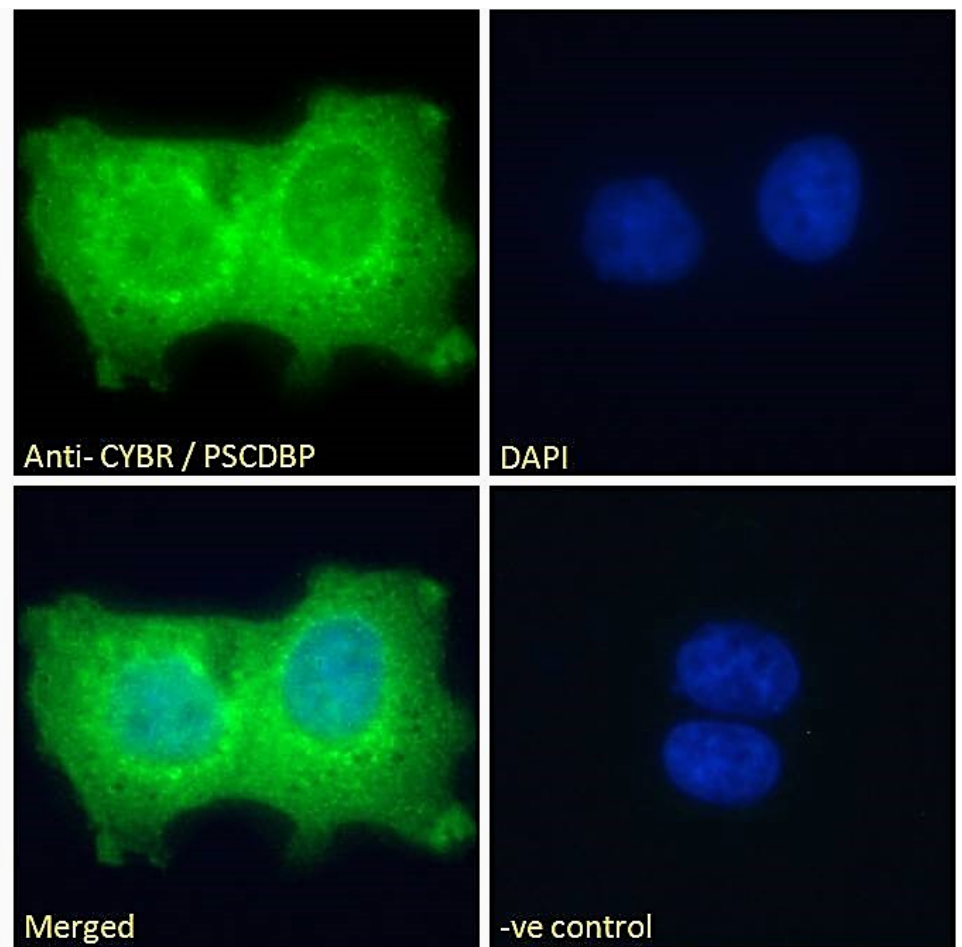
### Species Reactivity

**Tested:** Human

**Expected from sequence similarity:** Human, Dog, Pig

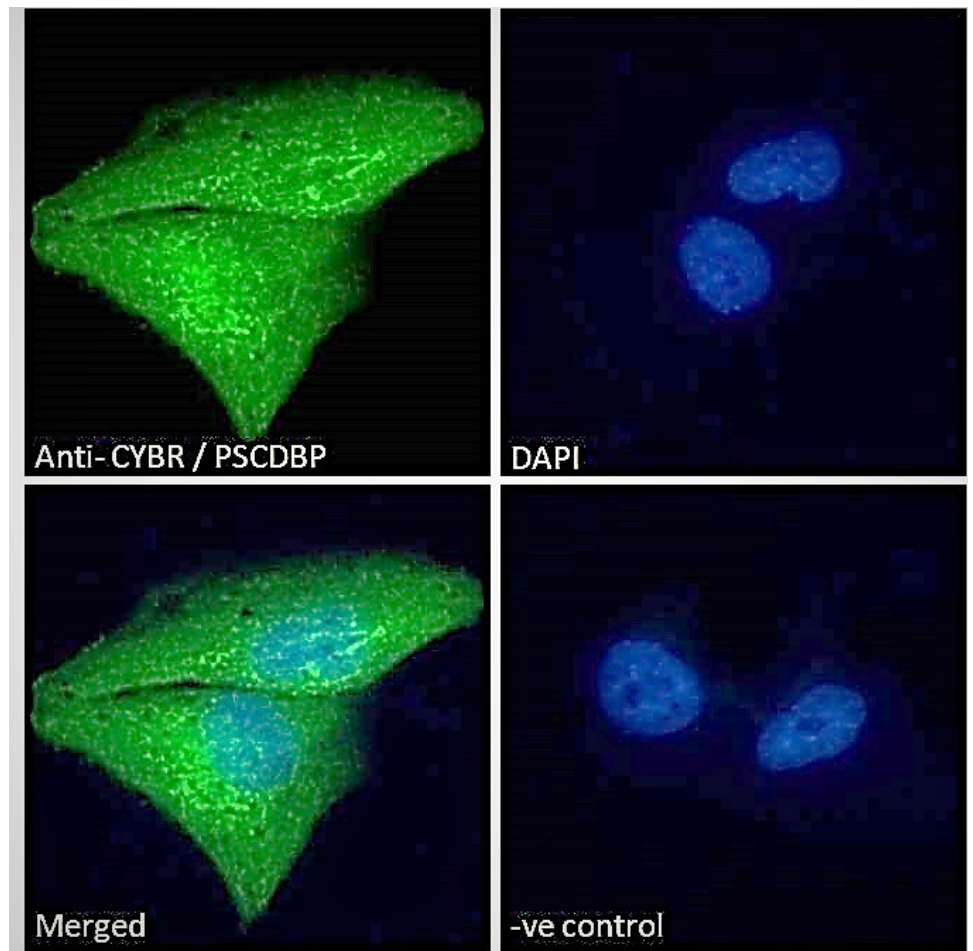


EB05366 (0.5 $\mu$ g/ml) staining of Jurkat (A) and (1 $\mu$ g/ml) MOLT4 (B) cell lysate (35 $\mu$ g protein in RIPA buffer).  
Detected by chemiluminescence.



EB05366 Immunofluorescence analysis of paraformaldehyde fixed A431 cells, permeabilized with 0.15% Triton. Primary incubation 1hr (10 $\mu$ g/ml) followed by Alexa Fluor 488 secondary antibody (2 $\mu$ g/ml), showing cytoplasmic and nuclear staining. The nuclear stain is DAPI (blue). Negative control: Unimmunized goat IgG (10 $\mu$ g/ml)

followed by Alexa Fluor 488 secondary antibody (2ug/ml).



EB05366 Immunofluorescence analysis of paraformaldehyde fixed U251 cells, permeabilized with 0.15% Triton. Primary incubation 1hr (10ug/ml) followed by Alexa Fluor 488 secondary antibody (2ug/ml), showing strong cytoplasmic and weak nuclear staining. The nuclear stain is DAPI (blue). Negative control: Unimmunized goat IgG (10ug/ml) followed by Alexa Fluor 488 secondary antibody (2ug/ml).