



UK Office

Everest Biotech Ltd

Cherwell Innovation Centre
77 Heyford Park
Upper Heyford
Oxfordshire
OX25 5HD
UK

Enquiries:

info@everestbiotech.com

Sales:

sales@everestbiotech.com

Tech support:

support@everestbiotech.com

Tel: +44 (0)1869 238326

www.everestbiotech.com

**Research Use Only. Not for
diagnostic or therapeutic use.**

EB11371 - Goat Anti-Cyclin D-type binding-protein 1 (aa322-333) Antibody

Size: 100µg specific antibody in 200µl



Target Protein

Principal Names: cyclin D-type binding-protein 1, cyclin-D1-binding protein 1, DIP1, GCIP, grap2 and cyclin-D-interacting protein, HHM, human homolog of Maid, OTTHUMP00000161296, CCNDBP1

Official Symbol: CCNDBP1

Accession Number(s): NP_036274.3

Human GeneID(s): [23582](#)

Immunogen

Peptide with sequence C-TKASHVTPQPED, from the internal region (near C Terminus) of the protein sequence according to NP_036274.3.

Please note the [peptide](#) is available for sale.

Purification and Storage

Purified from goat serum by ammonium sulphate precipitation followed by antigen affinity chromatography using the immunizing peptide.

Supplied at 0.5 mg/ml in Tris saline, 0.02% sodium azide, pH7.3 with 0.5% bovine serum albumin.

Aliquot and store at -20°C. Minimize freezing and thawing.

Applications Tested

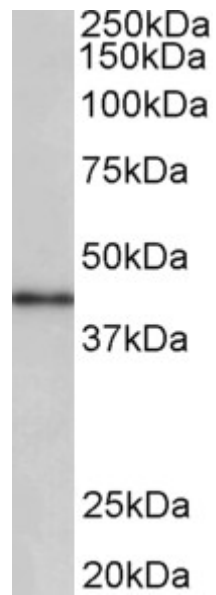
Peptide ELISA: antibody detection limit dilution 1:4000.

Western blot: Approx 40kDa band observed in Human Placenta lysates (calculated MW of 40.3kDa according to NP_036274.3). Recommended concentration: 0.3-1µg/ml.

Species Reactivity

Tested: Human

Expected from sequence similarity: Human, Dog, Pig, Cow



EB11371 (0.3 μ g/ml) staining of Human Placenta lysate (35 μ g protein in RIPA buffer). Primary incubation was 1 hour. Detected by chemiluminescence.