

UK Office

Everest Biotech Ltd

Cherwell Innovation Centre
77 Heyford Park
Upper Heyford
Oxfordshire
OX25 5HD
UK

Enquiries:

info@everestbiotech.com

Sales:

sales@everestbiotech.com

Tech support:

support@everestbiotech.com

Tel: +44 (0)1869 238326

www.everestbiotech.com

**Research Use Only. Not for
diagnostic or therapeutic use.**

EB12329 - Goat Anti-cyclin D1 Antibody

Size: 100µg specific antibody in 200µl



Target Protein

Principal Names: CCND1, cyclin D1, BCL1, D11S287E, PRAD1, U21B31, B-cell CLL/lymphoma 1, B-cell lymphoma 1 protein, BCL-1 oncogene, G1/S-specific cyclin-D1, PRAD1 oncogene

Official Symbol: CCND1

Accession Number(s): NP_444284.1

Human GeneID(s): [595](#)

Immunogen

Peptide with sequence TRFLSRVIKCDPD, from the internal region of the protein sequence according to NP_444284.1.

Please note the [peptide](#) is available for sale.

Purification and Storage

Purified from goat serum by ammonium sulphate precipitation followed by antigen affinity chromatography using the immunizing peptide.

Supplied at 0.5 mg/ml in Tris saline, 0.02% sodium azide, pH7.3 with 0.5% bovine serum albumin.

Aliquot and store at -20°C. Minimize freezing and thawing.

Applications Tested

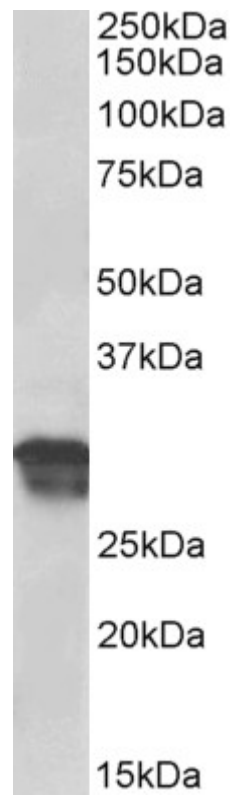
Peptide ELISA: antibody detection limit dilution 1:8000.

Western blot: Approx 30kDa band observed in Human Placenta lysates (calculated MW of 33.7kDa according to NP_444284.1). Recommended concentration: 0.5-1.5µg/ml.

Species Reactivity

Tested: Human

Expected from sequence similarity: Human



EB12329 (0.5 μ g/ml) staining of Human Placenta lysate (35 μ g protein in RIPA buffer). Primary incubation was 1 hour. Detected by chemiluminescence.