



## UK Office

### Everest Biotech Ltd

Cherwell Innovation Centre  
77 Heyford Park  
Upper Heyford  
Oxfordshire  
OX25 5HD  
UK

Enquiries:

[info@everestbiotech.com](mailto:info@everestbiotech.com)

Sales:

[sales@everestbiotech.com](mailto:sales@everestbiotech.com)

Tech support:

[support@everestbiotech.com](mailto:support@everestbiotech.com)

Tel: +44 (0)1869 238326

[www.everestbiotech.com](http://www.everestbiotech.com)

**Research Use Only. Not for  
diagnostic or therapeutic use.**

## EB07066 - Goat Anti-Cyclophilin A / PPIA Antibody

Size: 100µg specific antibody in 200µl

### Target Protein

**Principal Names:** PPIA, peptidylprolyl isomerase A (cyclophilin A), HGNC:9253, CYPA, CYPH, MGC12404, T cell cyclophilin, cyclosporin A-binding protein, peptidyl-prolyl cis-trans isomerase A, peptidylprolyl isomerase A, rotamase, MGC117158, MGC23397, PPIase A

**Official Symbol:** PPIA

**Accession Number(s):** NP\_066953.1

**Human GeneID(s):** [5478](#)

**Important Comments:** This product is expected to also recognise PPIAL (NP\_001008741.1, GeneID: 388817) which is identical to PPIA (NP\_066953.1).

### Immunogen

Peptide with sequence C-ERFGSRNGKTSKK, from the internal region of the protein sequence according to NP\_066953.1.

Please note the [peptide](#) is available for sale.

### Purification and Storage

Purified from goat serum by ammonium sulphate precipitation followed by antigen affinity chromatography using the immunizing peptide.

Supplied at 0.5 mg/ml in Tris saline, 0.02% sodium azide, pH7.3 with 0.5% bovine serum albumin.

Aliquot and store at -20°C. Minimize freezing and thawing.

### Applications Tested

**Peptide ELISA:** antibody detection limit dilution 1:8000.

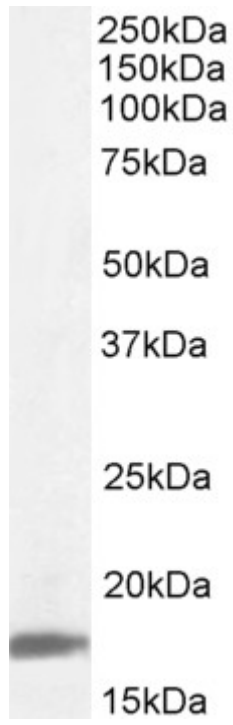
**Western blot:** Approx. 18kDa band observed in Human Lymph Node lysates (calculated MW 18.0kDa according to NP\_066953.1). Recommended Concentration: 0.1-0.3ug/ml.

Primary incubation was 1 hour.

### Species Reactivity

**Tested:** Human

**Expected from sequence similarity:** Human, Mouse, Rat, Dog, Pig, Cow



EB07066 (0.1 $\mu$ g/ml) staining of Human Lymph Node lysate (35 $\mu$ g protein in RIPA buffer). Detected by chemiluminescence.