

## UK Office

### Everest Biotech Ltd

Cherwell Innovation Centre  
77 Heyford Park  
Upper Heyford  
Oxfordshire  
OX25 5HD  
UK

Enquiries:

[info@everestbiotech.com](mailto:info@everestbiotech.com)

Sales:

[sales@everestbiotech.com](mailto:sales@everestbiotech.com)

Tech support:

[support@everestbiotech.com](mailto:support@everestbiotech.com)

Tel: +44 (0)1869 238326

[www.everestbiotech.com](http://www.everestbiotech.com)

**Research Use Only. Not for  
diagnostic or therapeutic use.**

## EB07219 - Goat Anti-CYP17A1 Antibody

Size: 100µg specific antibody in 200µl



### Target Protein

**Principal Names:** CYP17A1, cytochrome P450, family 17, subfamily A, polypeptide 1, HGNC:2593, CPT7, CYP17, P450C17, S17AH, cytochrome P450, family 17, cytochrome P450, subfamily XVII (steroid 17-alpha-hydroxylase), adrenal hyperplasia, cytochrome p450 XVIIIA1, steroid 17-alpha-hydroxylase/17,20 lyase, steroid 17-alpha-monoxygenase

**Official Symbol:** CYP17A1

**Accession Number(s):** NP\_000093.1

**Human GeneID(s):** [1586](#)

### Immunogen

Peptide with sequence C-LFKDGDQKLEK, from the internal region of the protein sequence according to NP\_000093.1.

Please note the [peptide](#) is available for sale.

### Purification and Storage

Purified from goat serum by ammonium sulphate precipitation followed by antigen affinity chromatography using the immunizing peptide.

Supplied at 0.5 mg/ml in Tris saline, 0.02% sodium azide, pH7.3 with 0.5% bovine serum albumin.

Aliquot and store at -20°C. Minimize freezing and thawing.

### Applications Tested

**Peptide ELISA:** antibody detection limit dilution 1:64000.

**Western blot:** Approx 60kDa band observed in Human Ovary lysates (calculated MW of 57.4kDa according to NP\_000093.1). Recommended concentration: 0.1-0.3µg/ml. Primary incubation was 1 hour.

**IHC:** In paraffin embedded Human Adenal Gland shows strong granular staining of the cytoplasm in medulla cells. Recommended concentration: 3-5µg/ml.

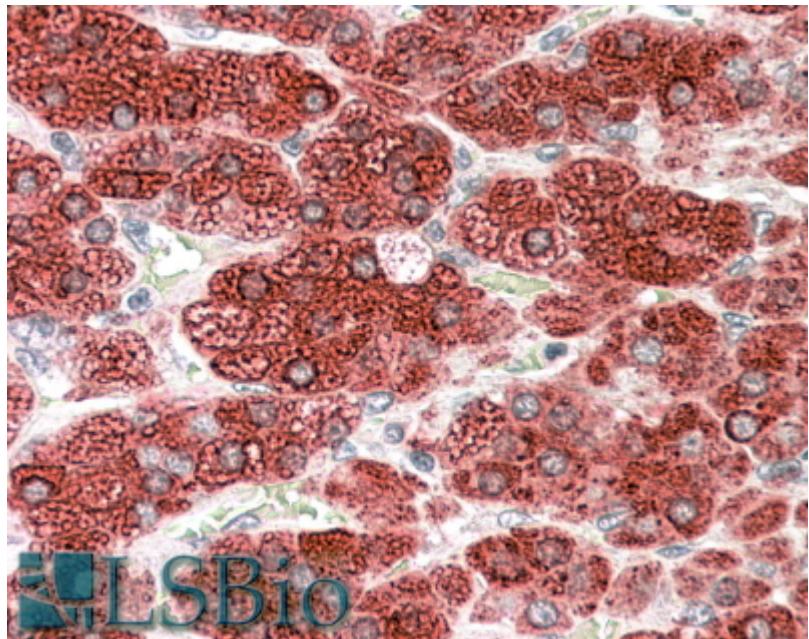
### Species Reactivity

**Tested:** Human

**Expected from sequence similarity:** Human, Cat, Dog



EB07219 (0.3 $\mu$ g/ml) staining of Human Ovary lysate (35 $\mu$ g protein in RIPA buffer). Detected by chemiluminescence.



EB07219 (3.8 $\mu$ g/ml) staining of paraffin embedded Human Adrenal Gland. Steamed antigen retrieval with citrate buffer pH 6, AP-staining.