



## UK Office

### Everest Biotech Ltd

Cherwell Innovation Centre  
77 Heyford Park  
Upper Heyford  
Oxfordshire  
OX25 5HD  
UK

Enquiries:

[info@everestbiotech.com](mailto:info@everestbiotech.com)

Sales:

[sales@everestbiotech.com](mailto:sales@everestbiotech.com)

Tech support:

[support@everestbiotech.com](mailto:support@everestbiotech.com)

Tel: +44 (0)1869 238326

Fax: +44 (0)1869 238327

## US Office

### Everest Biotech c/o Abcore

405 Maple Street, Suite A106  
Ramona,  
CA 92065  
USA

Inquiries:

[info@everestbiotech.com](mailto:info@everestbiotech.com)

Sales:

[usasales@everestbiotech.com](mailto:usasales@everestbiotech.com)

Tech support:

[support@everestbiotech.com](mailto:support@everestbiotech.com)

Tel: 888-320-4628 (toll-free)

Fax: 888-841-9041

[www.everestbiotech.com](http://www.everestbiotech.com)

**Research Use Only. Not for  
diagnostic or therapeutic use.**

## EB10490 - Goat Anti-CYP24A1 Antibody

Size: 100µg specific antibody in 200µl



### Target Protein

**Principal Names:** 1,25-@dihydroxyvitamin D3 24-hydroxylase, 24-OHase, CP24, CYP24, cytochrome P450 family 24 subfamily A polypeptide 1, cytochrome P450, family 24, subfamily A, polypeptide 1, cytochrome P450, subfamily XXIV (vitami, MGC126273, MGC126274, P450-CC24, CYP24A1

**Official Symbol:** CYP24A1

**Accession Number(s):** NP\_000773.2; NP\_001122387.1

**Human GeneID(s):** [1591](#)

**Important Comments:** This antibody is expected to recognize both reported isoforms (NP\_000773.2; NP\_001122387.1).

### Immunogen

Peptide with sequence C-RKYDIQATDN, from the internal region of the protein sequence according to NP\_000773.2; NP\_001122387.1.

Please note the [peptide](#) is available for sale.

### Purification and Storage

Purified from goat serum by ammonium sulphate precipitation followed by antigen affinity chromatography using the immunizing peptide.

Supplied at 0.5 mg/ml in Tris saline, 0.02% sodium azide, pH7.3 with 0.5% bovine serum albumin.

Aliquot and store at -20°C. Minimize freezing and thawing.

### Applications Tested

**Peptide ELISA:** antibody detection limit dilution 1:32000.

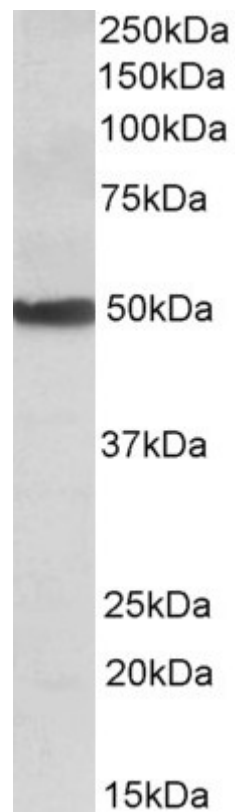
**Western blot:** Approx 50kDa band observed in Human and Rat Liver lysates (calculated MW of 51.2kDa according to NP\_001122387.1). Recommended concentration: 0.1-0.3µg/ml. Primary incubation was 1 hour.

**IHC:** Paraffin embedded Human Skin. Recommended concentration: 3.75µg/ml.

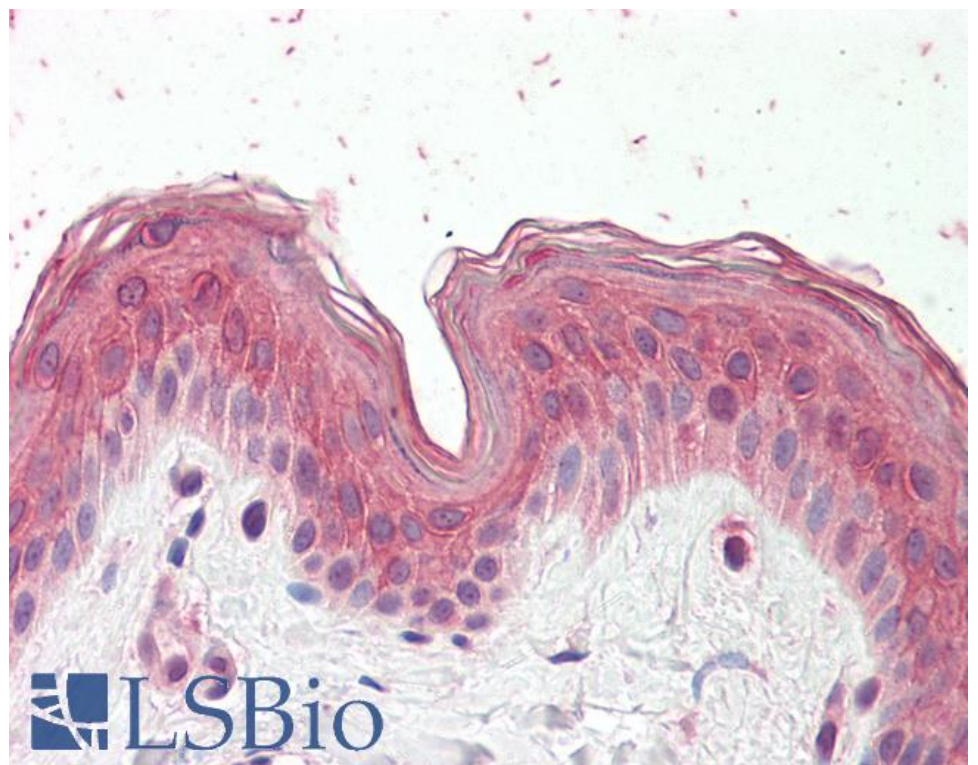
### Species Reactivity

**Tested:** Human, Rat

**Expected from sequence similarity:** Human



EB10490 (0.1 $\mu$ g/ml) staining of Human Liver lysate (35 $\mu$ g protein in RIPA buffer). Detected by chemiluminescence.



EB10490 (3.75 $\mu$ g/ml) staining of paraffin embedded Human Skin. Steamed antigen retrieval with citrate buffer pH 6, AP-staining.