



## UK Office

### Everest Biotech Ltd

Cherwell Innovation Centre  
77 Heyford Park  
Upper Heyford  
Oxfordshire  
OX25 5HD  
UK

Enquiries:

[info@everestbiotech.com](mailto:info@everestbiotech.com)

Sales:

[sales@everestbiotech.com](mailto:sales@everestbiotech.com)

Tech support:

[support@everestbiotech.com](mailto:support@everestbiotech.com)

Tel: +44 (0)1869 238326

Fax: +44 (0)1869 238327

## US Office

### Everest Biotech c/o Abcore

405 Maple Street, Suite A106  
Ramona,  
CA 92065  
USA

Inquiries:

[info@everestbiotech.com](mailto:info@everestbiotech.com)

Sales:

[usasales@everestbiotech.com](mailto:usasales@everestbiotech.com)

Tech support:

[support@everestbiotech.com](mailto:support@everestbiotech.com)

Tel: 888-320-4628 (toll-free)

Fax: 888-841-9041

[www.everestbiotech.com](http://www.everestbiotech.com)

**Research Use Only. Not for  
diagnostic or therapeutic use.**

## EB09041 - Goat Anti-CYP26A1 Antibody

Size: 100µg specific antibody in 200µl



### Target Protein

**Principal Names:** CYP26A1, cytochrome P450, family 26, subfamily A, polypeptide 1, CP26, CYP26, P450RAI, P450RAI1, P450, retinoic acid-inactivating, 1, cytochrome P450, subfamily XXVIA, polypeptide 1, retinoic acid 4-hydroxylase, retinoic acid-metabolizing cytochrome

**Official Symbol:** CYP26A1

**Accession Number(s):** NP\_000774.2; NP\_476498.1

**Human GeneID(s):** [1592](#)

**Important Comments:** This antibody is expected to recognize both reported isoforms (NP\_000774.2; NP\_476498.1)

### Immunogen

Peptide with sequence C-NLPARFTHFHGE, from the internal region of the protein sequence according to NP\_000774.2; NP\_476498.1.

Please note the [peptide](#) is available for sale.

### Purification and Storage

Purified from goat serum by ammonium sulphate precipitation followed by antigen affinity chromatography using the immunizing peptide.

Supplied at 0.5 mg/ml in Tris saline, 0.02% sodium azide, pH7.3 with 0.5% bovine serum albumin.

Aliquot and store at -20°C. Minimize freezing and thawing.

### Applications Tested

**Peptide ELISA:** antibody detection limit dilution 1:16000.

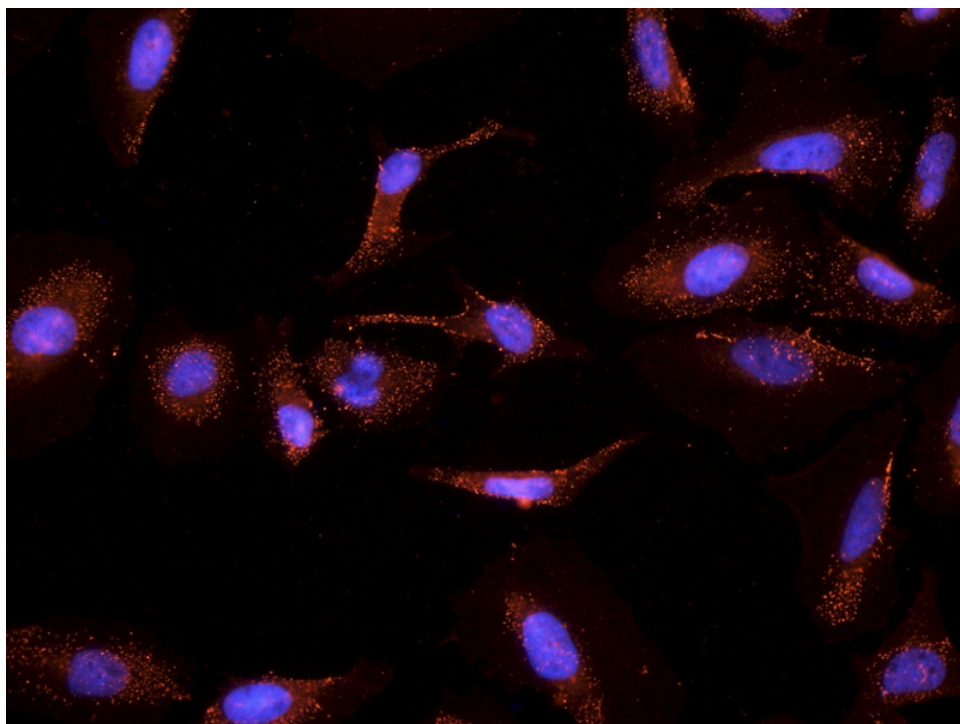
**IHC:** Paraffin embedded Human Brain (Cortex and Cerebellum). Recommended concentration: 3.75µg/ml.

**Immunocytochemistry:** ER-staining of PFA-fixed and TX100-treated HeLa cells. Recommended concentration: 2-5ug/ml.

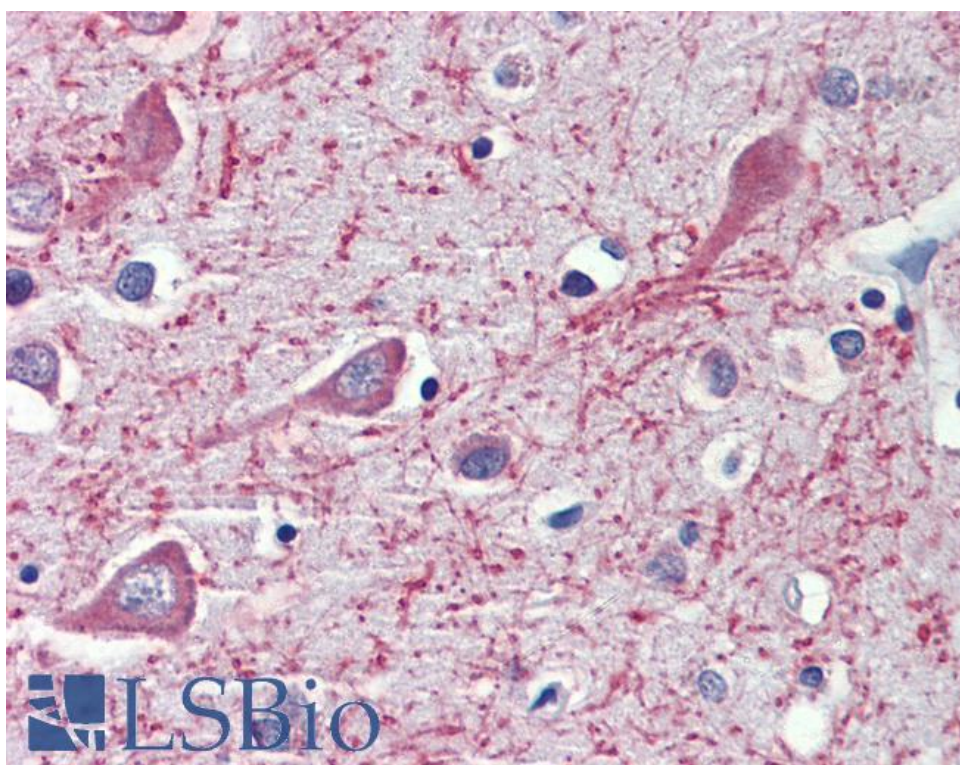
### Species Reactivity

**Tested:** Human

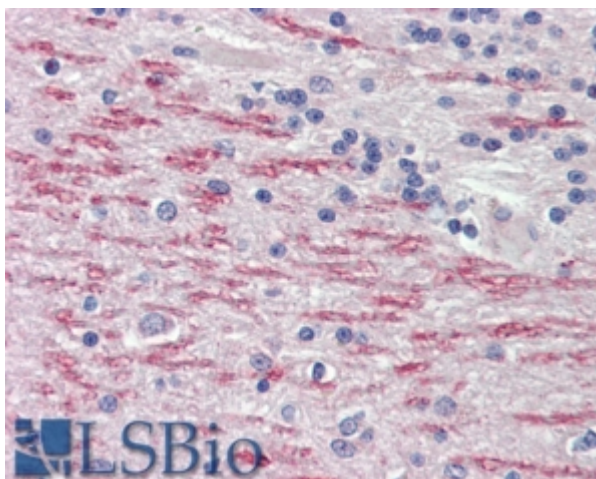
**Expected from sequence similarity:** Human



EB09041 (2.5µg/ml) staining of PFA-fixed and TX100-treated HeLa cells after primary labelling overnight at 4C with DAPI nuclear counterstaining in blue.



EB09041 (3.75µg/ml) staining of paraffin embedded Human Cortex. Steamed antigen retrieval with citrate buffer pH 6, AP-staining.



EB09041 (3.75µg/ml) staining of paraffin embedded Human Cerebellum. Steamed antigen retrieval with citrate buffer pH 6, AP-staining.