



UK Office

Everest Biotech Ltd

Cherwell Innovation Centre
77 Heyford Park
Upper Heyford
Oxfordshire
OX25 5HD
UK

Enquiries:

info@everestbiotech.com

Sales:

sales@everestbiotech.com

Tech support:

support@everestbiotech.com

Tel: +44 (0)1869 238326

www.everestbiotech.com

**Research Use Only. Not for
diagnostic or therapeutic use.**

EB07481 - Goat Anti-CYP26B1 Antibody

Size: 100µg specific antibody in 200µl



Target Protein

Principal Names: CYP26B1, cytochrome P450, family 26, subfamily B, polypeptide 1, CYP26A2, DKFZp686G0638, MGC129613, P450RAI-2, cytochrome P450 retinoid metabolizing protein, cytochrome P450, family 26, subfamily b, polypeptide 1, retinoic acid-metabolizing cytochrome

Official Symbol: CYP26B1

Accession Number(s): NP_063938.1; NP_001264671.1

Human GeneID(s): [56603](#)

Non-Human GeneID(s): 232174 (mouse), 312495 (rat)

Immunogen

Peptide with sequence C-SQARSEDKDGRFH, from the internal region of the protein sequence according to NP_063938.1; NP_001264671.1.

Please note the [peptide](#) is available for sale.

Purification and Storage

Purified from goat serum by ammonium sulphate precipitation followed by antigen affinity chromatography using the immunizing peptide.

Supplied at 0.5 mg/ml in Tris saline, 0.02% sodium azide, pH7.3 with 0.5% bovine serum albumin.

Aliquot and store at -20°C. Minimize freezing and thawing.

Applications Tested

Peptide ELISA: antibody detection limit dilution 1:128000.

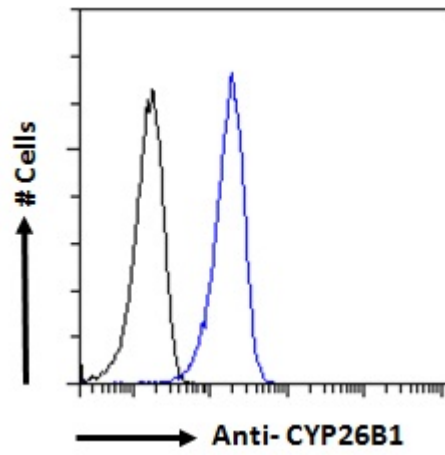
IHC: In paraffin embedded Human Cerebellum shows staining of cell bodies in the Molecular Layer. Recommended concentration: 4-6µg/ml. Paraffin embedded Human Small Intestine, Spleen and Testis. Recommended concentration: 3.75µg/ml.

Flow Cytometry: Flow cytometric analysis of A431 cells. Recommended concentration: 10ug/ml.

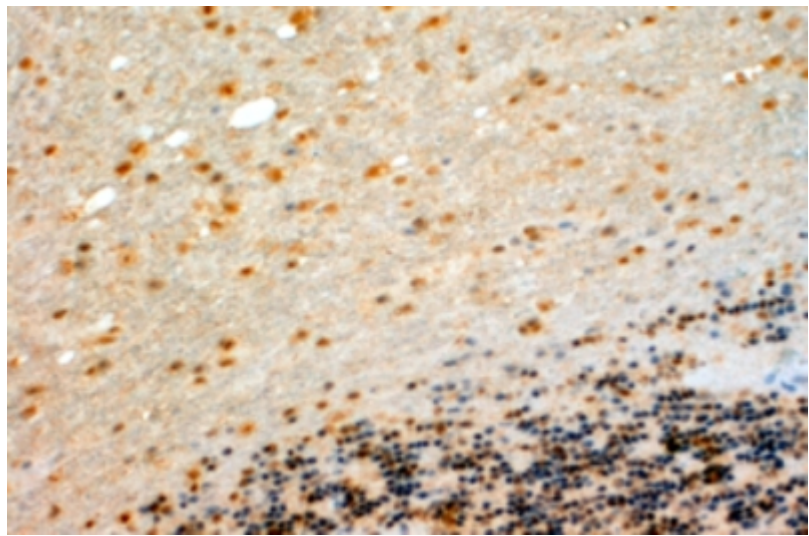
Species Reactivity

Tested: Human

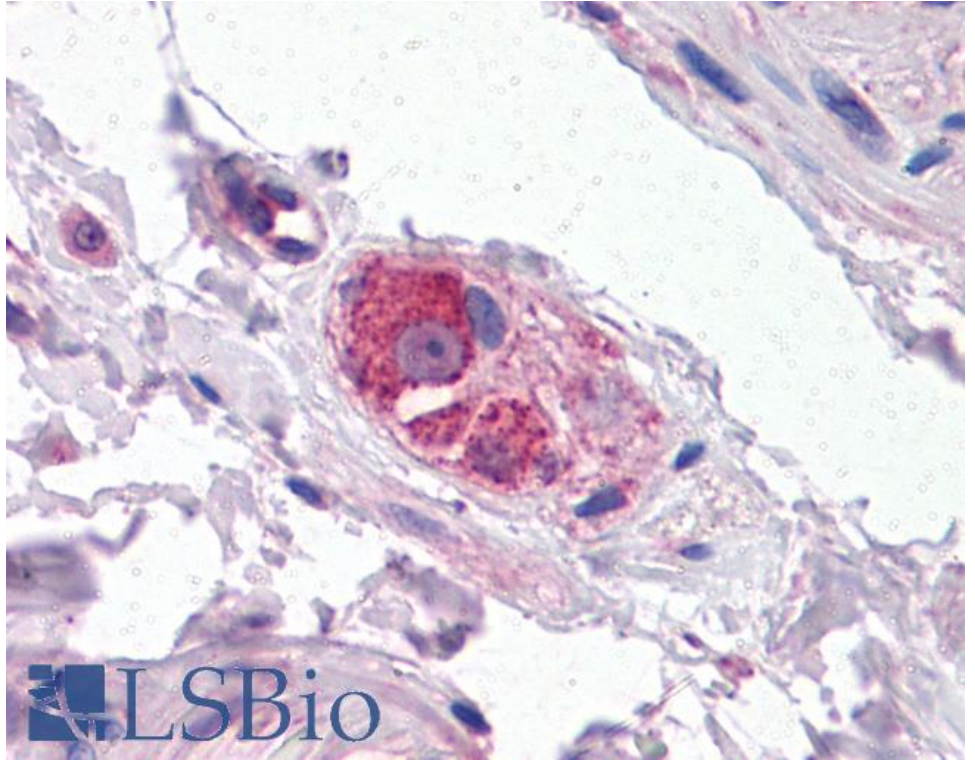
Expected from sequence similarity: Human, Mouse, Rat, Dog



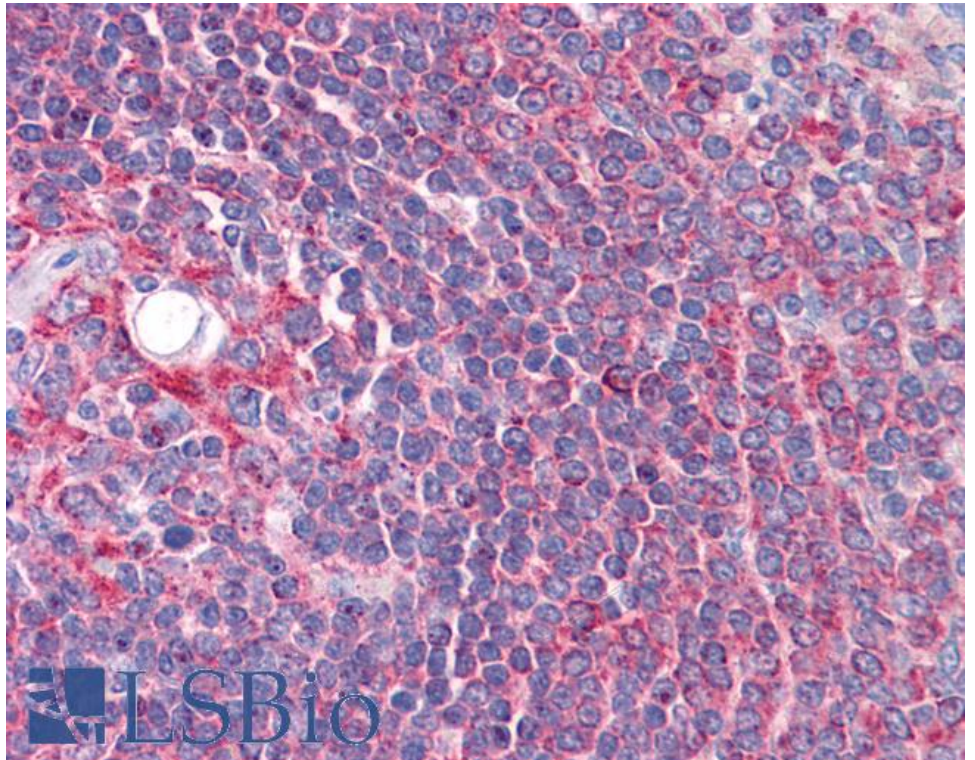
EB07481 Flow cytometric analysis of paraformaldehyde fixed A431 cells (blue line), permeabilized with 0.5% Triton. Primary incubation 1hr (10ug/ml) followed by Alexa Fluor 488 secondary antibody (1ug/ml). IgG control: Unimmunized goat IgG (black line) followed by Alexa Fluor 488 secondary antibody.



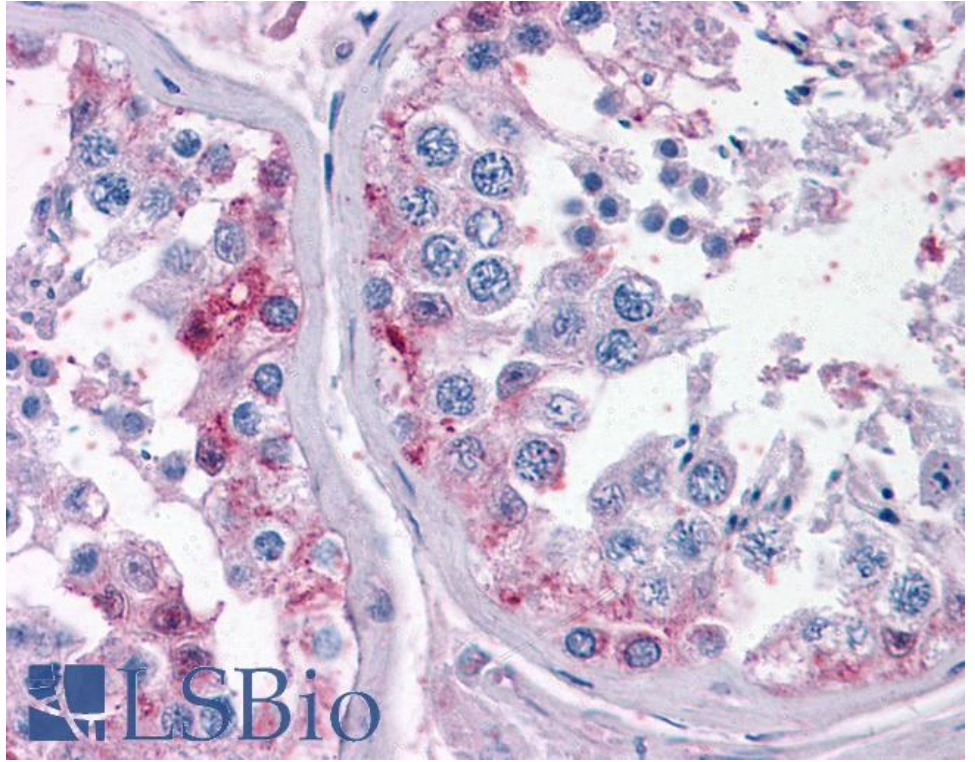
EB07481 (4µg/ml) staining of paraffin embedded Human Cerebellum. Steamed antigen retrieval with Tris/EDTA buffer pH 9, HRP-staining.



EB07481 (3.75µg/ml) staining of paraffin embedded Human Small Intestine. Steamed antigen retrieval with citrate buffer pH 6, AP-staining.



EB07481 (3.75µg/ml) staining of paraffin embedded Human Spleen. Steamed antigen retrieval with citrate buffer pH 6, AP-staining.



EB07481 (3.75µg/ml) staining of paraffin embedded Human Testis. Steamed antigen retrieval with citrate buffer pH 6, AP-staining.