



## UK Office

### Everest Biotech Ltd

Cherwell Innovation Centre  
77 Heyford Park  
Upper Heyford  
Oxfordshire  
OX25 5HD  
UK

Enquiries:

[info@everestbiotech.com](mailto:info@everestbiotech.com)

Sales:

[sales@everestbiotech.com](mailto:sales@everestbiotech.com)

Tech support:

[support@everestbiotech.com](mailto:support@everestbiotech.com)

Tel: +44 (0)1869 238326

Fax: +44 (0)1869 238327

## US Office

### Everest Biotech c/o Abcore

405 Maple Street, Suite A106  
Ramona,  
CA 92065  
USA

Inquiries:

[info@everestbiotech.com](mailto:info@everestbiotech.com)

Sales:

[usasales@everestbiotech.com](mailto:usasales@everestbiotech.com)

Tech support:

[support@everestbiotech.com](mailto:support@everestbiotech.com)

Tel: 888-320-4628 (toll-free)

Fax: 888-841-9041

[www.everestbiotech.com](http://www.everestbiotech.com)

**Research Use Only. Not for  
diagnostic or therapeutic use.**

## EB07481 - Goat Anti-CYP26B1 Antibody

Size: 100µg specific antibody in 200µl



### Target Protein

**Principal Names:** CYP26B1, cytochrome P450, family 26, subfamily B, polypeptide 1, CYP26A2, DKFZp686G0638, MGC129613, P450RAI-2, cytochrome P450 retinoid metabolizing protein, cytochrome P450, family 26, subfamily b, polypeptide 1, retinoic acid-metabolizing cytochrome

**Official Symbol:** CYP26B1

**Accession Number(s):** NP\_063938.1; NP\_001264671.1

**Human GeneID(s):** [56603](#)

**Non-Human GeneID(s):** 232174 (mouse), 312495 (rat)

### Immunogen

Peptide with sequence C-SQARSEDKDGRFH, from the internal region of the protein sequence according to NP\_063938.1; NP\_001264671.1.

Please note the [peptide](#) is available for sale.

### Purification and Storage

Purified from goat serum by ammonium sulphate precipitation followed by antigen affinity chromatography using the immunizing peptide.

Supplied at 0.5 mg/ml in Tris saline, 0.02% sodium azide, pH7.3 with 0.5% bovine serum albumin.

Aliquot and store at -20°C. Minimize freezing and thawing.

### Applications Tested

**Peptide ELISA:** antibody detection limit dilution 1:128000.

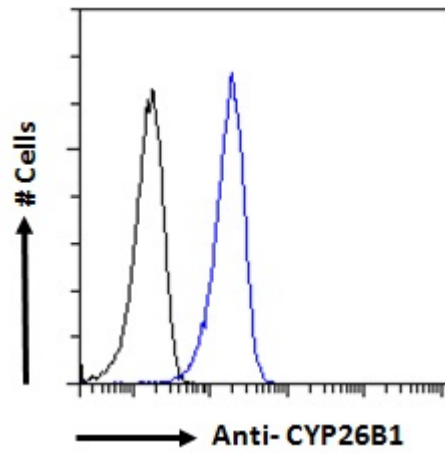
**IHC:** In paraffin embedded Human Cerebellum shows staining of cell bodies in the Molecular Layer. Recommended concentration: 4-6µg/ml. Paraffin embedded Human Small Intestine, Spleen and Testis. Recommended concentration: 3.75µg/ml.

**Flow Cytometry:** Flow cytometric analysis of A431 cells. Recommended concentration: 10ug/ml.

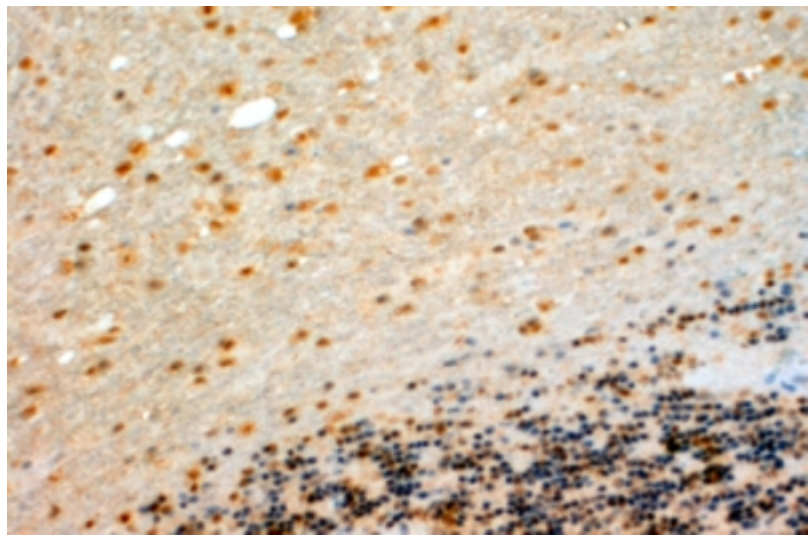
### Species Reactivity

**Tested:** Human

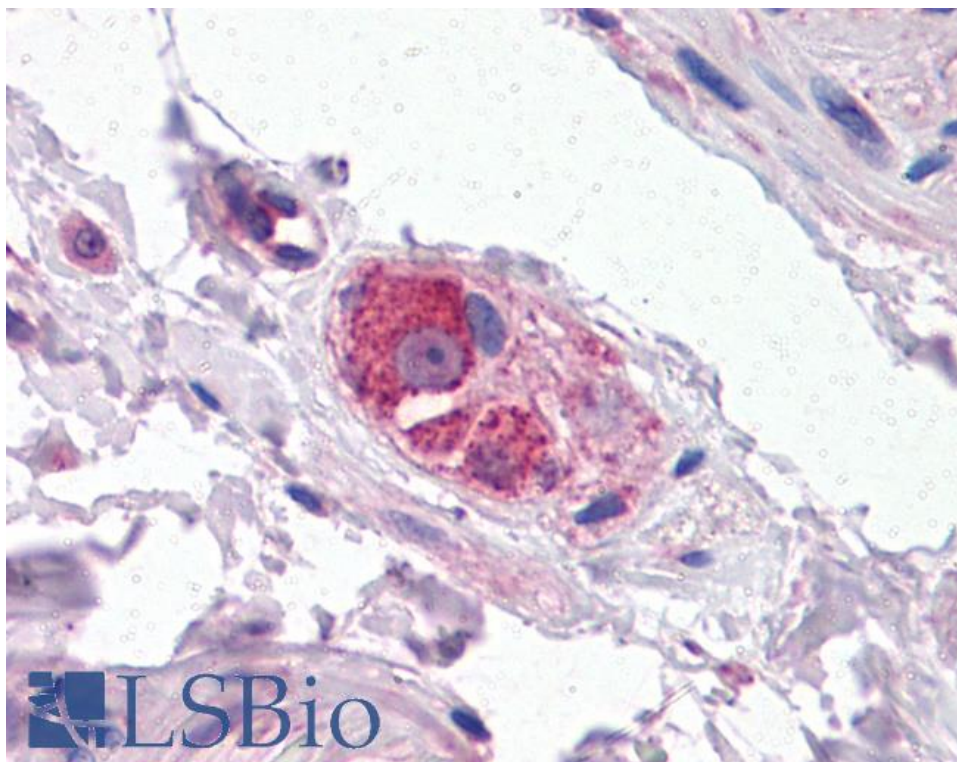
**Expected from sequence similarity:** Human, Mouse, Rat, Dog



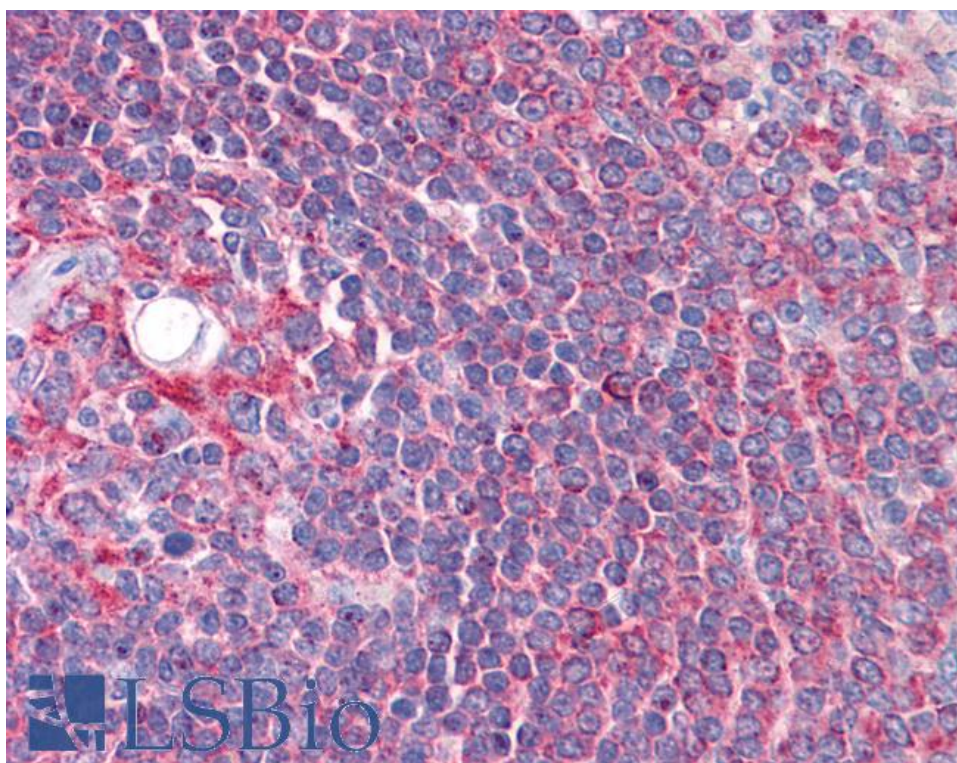
EB07481 Flow cytometric analysis of paraformaldehyde fixed A431 cells (blue line), permeabilized with 0.5% Triton. Primary incubation 1hr (10ug/ml) followed by Alexa Fluor 488 secondary antibody (1ug/ml). IgG control: Unimmunized goat IgG (black line) followed by Alexa Fluor 488 secondary antibody.



EB07481 (4μg/ml) staining of paraffin embedded Human Cerebellum. Steamed antigen retrieval with Tris/EDTA buffer pH 9, HRP-staining.

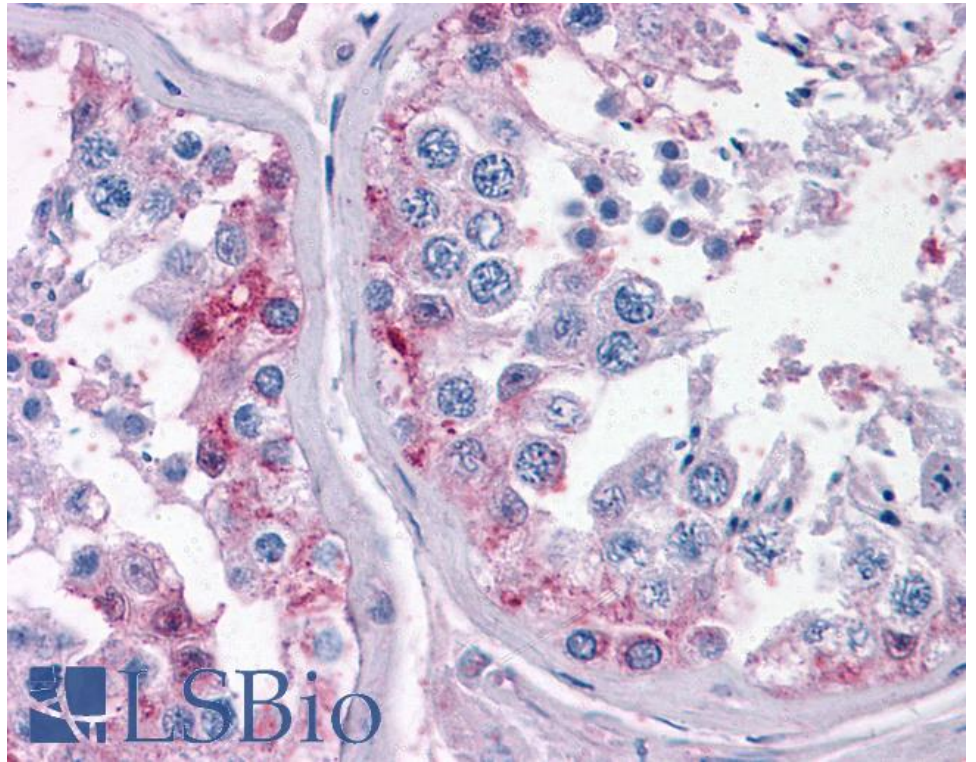


EB07481 (3.75µg/ml) staining of paraffin embedded Human Small Intestine. Steamed antigen retrieval with citrate buffer pH 6, AP-staining.



EB07481 (3.75µg/ml) staining of paraffin embedded Human Spleen. Steamed antigen retrieval with citrate buffer pH 6, AP-staining.





EB07481 (3.75µg/ml) staining of paraffin embedded Human Testis. Steamed antigen retrieval with citrate buffer pH 6, AP-staining.