

UK Office

Everest Biotech Ltd

Cherwell Innovation Centre
77 Heyford Park
Upper Heyford
Oxfordshire
OX25 5HD
UK

Enquiries:

info@everestbiotech.com

Sales:

sales@everestbiotech.com

Tech support:

support@everestbiotech.com

Tel: +44 (0)1869 238326

www.everestbiotech.com

**Research Use Only. Not for
diagnostic or therapeutic use.**

EB07194 - Goat Anti-CYP3A4 Antibody

Size: 100µg specific antibody in 200µl



Target Protein

Principal Names: CYP3A4, cytochrome P450, family 3, subfamily A, polypeptide 4, HGNC:2637, CP33, CP34, CYP3A, CYP3A3, HLP, NF-25, P450C3, P450PCN1, P450-III, steroid inducible, cytochrome P450, subfamily IIIA (niphedipine oxidase), polypeptide 3, cytochrome P450, subfamily IIIA (niphedipine oxidase), polypeptide 4, cytochrome P450, subfamily IIIA, polypeptide 4, glucocorticoid-inducible P450, nifedipine oxidase

Official Symbol: CYP3A4

Accession Number(s): NP_059488.2; NP_001189784.1

Human GeneID(s): [1576](#)

Important Comments: This antibody is expected to recognise both reported isoforms (NP_059488.2; NP_001189784.1) and it is not expected to cross-react with 3A5, 3A7 or 3A43.

Immunogen

Peptide with sequence C-KESRLEDTQKHR, from the internal region of the protein sequence according to NP_059488.2; NP_001189784.1.

Please note the [peptide](#) is available for sale.

Purification and Storage

Purified from goat serum by ammonium sulphate precipitation followed by antigen affinity chromatography using the immunizing peptide.

Supplied at 0.5 mg/ml in Tris saline, 0.02% sodium azide, pH7.3 with 0.5% bovine serum albumin.

Aliquot and store at -20°C. Minimize freezing and thawing.

Applications Tested

Peptide ELISA: antibody detection limit dilution 1:8000.

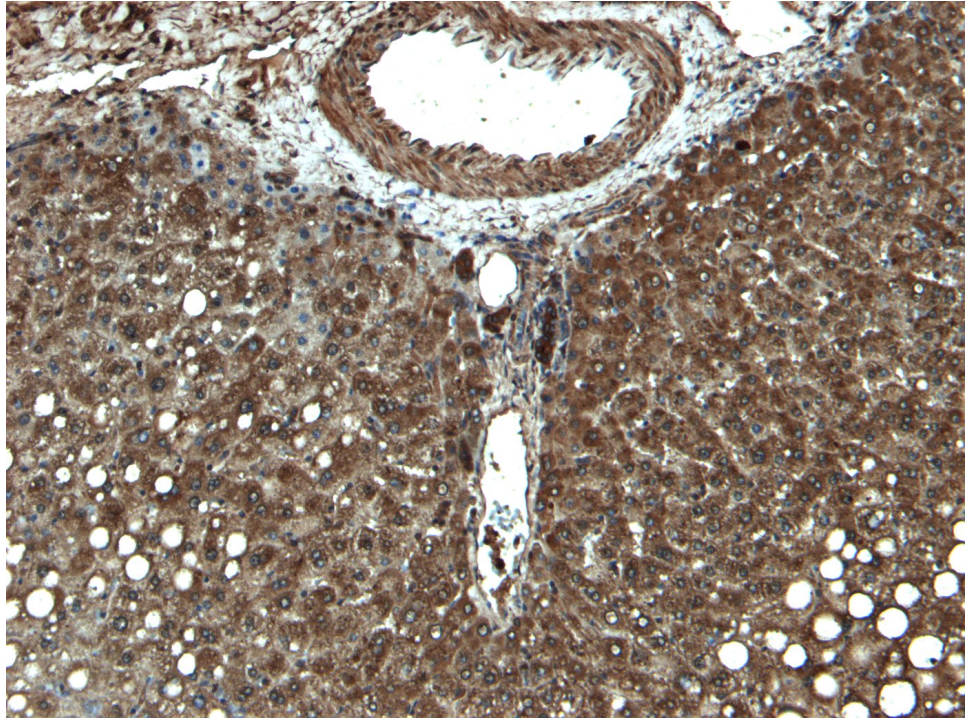
IHC: Paraffin embedded Human Liver. Recommended concentration: 5-7µg/ml.

Flow Cytometry: Flow cytometric analysis of HepG2 cells. Recommended concentration: 10ug/ml.

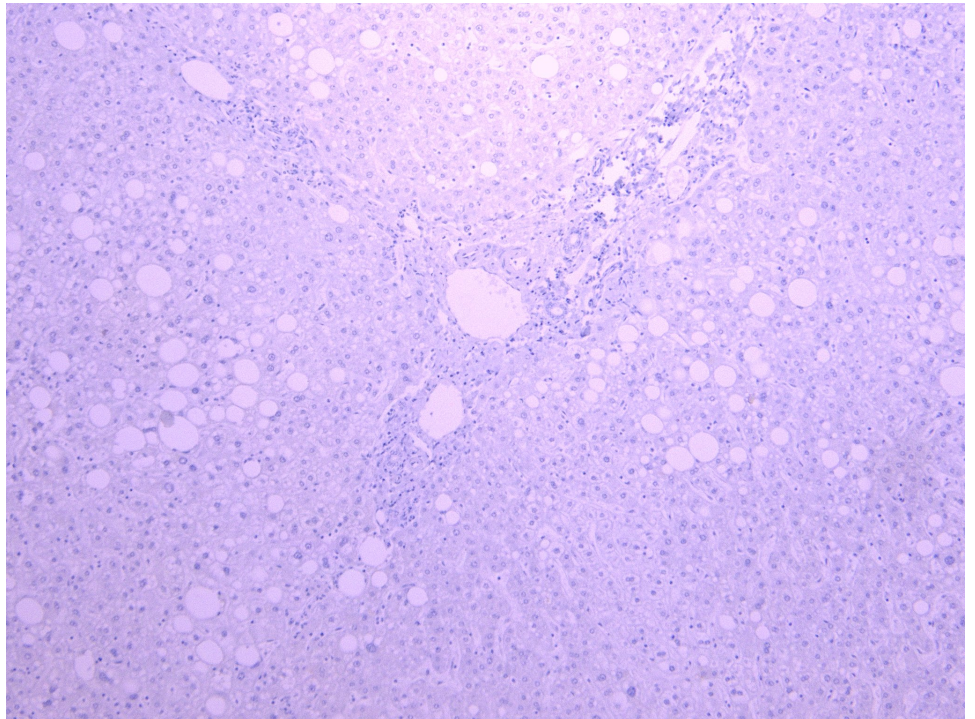
Species Reactivity

Tested: Human

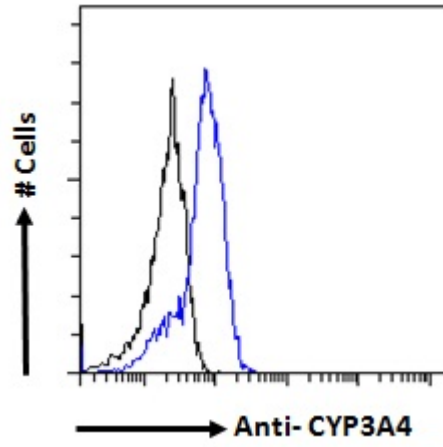
Expected from sequence similarity: Human



EB07194 (5 μ g/ml) staining of paraffin embedded Human Liver. Heat induced antigen retrieval with citrate buffer pH 6, HRP-staining.



EB07194 Negative Control showing staining of paraffin embedded Human Liver, with no primary antibody.



EB07194 Flow cytometric analysis of paraformaldehyde fixed HepG2 cells (blue line), permeabilized with 0.5% Triton. Primary incubation 1hr (10ug/ml) followed by Alexa Fluor 488 secondary antibody (1ug/ml). IgG control: Unimmunized goat IgG (black line) followed by Alexa Fluor 488 secondary antibody.