



International Office

Everest Biotech Ltd

Vector Laboratories, Inc.
6737 Mowry Ave
Newark, CA 94560
United States

Customer Service:

customerservice@vectorlabs.com

Technical Service:

technical@vectorlabs.com

Tel: +1 (800) 227-6666

www.everestbiotech.com

**Research Use Only. Not for
diagnostic or therapeutic use.**

EB06161 - Goat Anti-CYP7B1 Antibody

Size: 100µg specific antibody in 200µl



Target Protein

Principal Names: CYP7B1, CP7B, cytochrome P450, family 7, subfamily B, polypeptide 1, oxysterol 7alpha-hydroxylase, cytochrome P450, subfamily VIIB (oxysterol 7 alpha-hydroxylase), polypeptide 1, CBAS3, SPG5A

Official Symbol: CYP7B1

Accession Number(s): NP_004811.1

Human GeneID(s): [9420](#)

Immunogen

Peptide with sequence C-YPDSDVLFYKVKKS, from the C Terminus of the protein sequence according to NP_004811.1.

Please note the [peptide](#) is available for sale.

Purification and Storage

Purified from goat serum by ammonium sulphate precipitation followed by antigen affinity chromatography using the immunizing peptide.

Supplied at 0.5 mg/ml in Tris saline, 0.02% sodium azide, pH7.3 with 0.5% bovine serum albumin.

Aliquot and store at -20°C. Minimize freezing and thawing.

Applications Tested

Peptide ELISA: antibody detection limit dilution 1:128000.

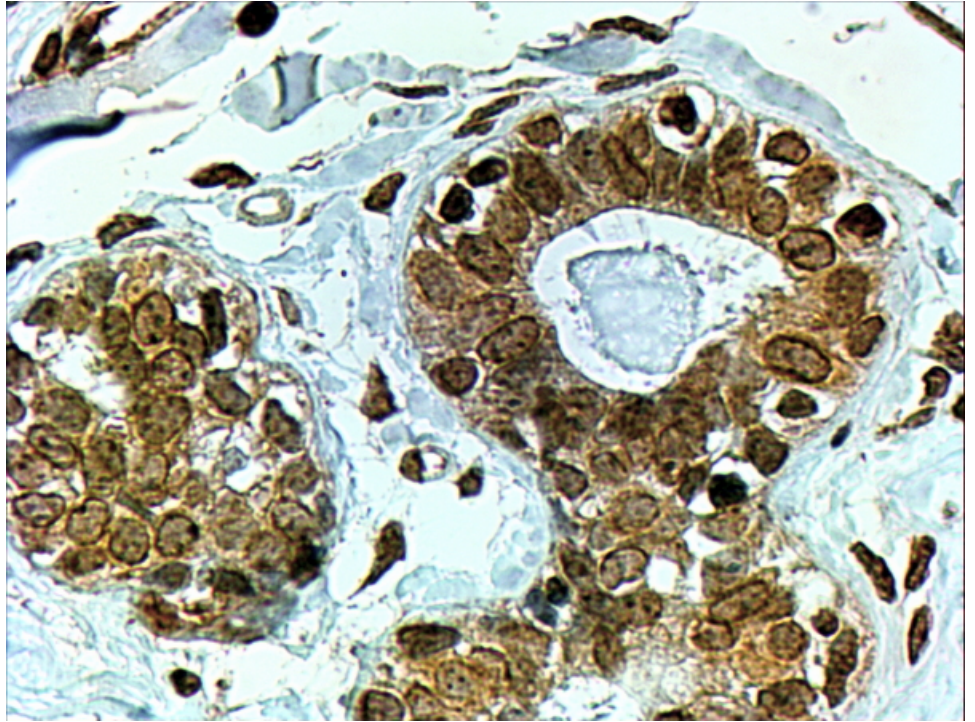
Western blot: Preliminary experiments in Human Liver, Kidney and Prostate lysates gave no specific signal but low background (at antibody concentration up to 1µg/ml). We would appreciate any feedback from people in the field - have any results been reported with other antibodies/lysates?

IHC: In paraffin embedded Human Breast shows textured cytoplasm staining in ductal epithelial cells. Recommended concentration, 3-6µg/ml.

Species Reactivity

Tested:

Expected from sequence similarity: Human, Cow



EB06161 (4 μ g/ml) staining of paraffin embedded Human Breast. Steamed antigen retrieval with citrate buffer pH 6, HRP-staining.