



International Office

Everest Biotech Ltd

Vector Laboratories, Inc.
6737 Mowry Ave
Newark, CA 94560
United States

Customer Service:

customerservice@vectorlabs.com

Technical Service:

technical@vectorlabs.com

Tel: +1 (800) 227-6666

www.everestbiotech.com

**Research Use Only. Not for
diagnostic or therapeutic use.**

EB09823 - Goat Anti-Cystatin 8 (aa 100-112) Antibody

Size: 100µg specific antibody in 200µl



Target Protein

Principal Names: CRES, cystatin 8, cystatin 8 (cystatin-related epididymal specific), cystatin-related epididymal spermatogenic protein, cystatin-related epididymal-specific, CST8

Official Symbol: CST8

Accession Number(s): NP_005483.1

Human GeneID(s): [10047](#)

Immunogen

Peptide with sequence STNEICAIQENSK, from the internal region of the protein sequence according to NP_005483.1.

Please note the [peptide](#) is available for sale.

Purification and Storage

Purified from goat serum by ammonium sulphate precipitation followed by antigen affinity chromatography using the immunizing peptide.

Supplied at 0.5 mg/ml in Tris saline, 0.02% sodium azide, pH7.3 with 0.5% bovine serum albumin.

Aliquot and store at -20°C. Minimize freezing and thawing.

Applications Tested

Peptide ELISA: antibody detection limit dilution 1:16000.

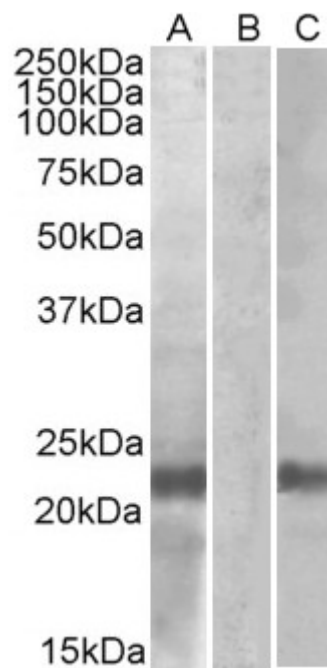
Western blot: In transfected HEK293 transiently expressing Human CST8 (MYC and DYKDDDDK tagged), a band of approx. 23kDa is observed. No bands are observed in mock-transfected HEK293 and the same band is observed using anti-myc tag antibody. Recommended concentration, 1-3µg/ml.

Purchase the +ve control! The transfected lysate used in QC is available for sale. Please email sales@everestbiotech.com to request datasheet, pricing and delivery information.

Species Reactivity

Tested: Human

Expected from sequence similarity: Human



HEK293 lysate (10ug protein in RIPA buffer) overexpressing Human CST8 (RC210130) with C-terminal MYC tag probed with EB09823 (1ug/ml) in Lane A and probed with anti-MYC Tag (1/1000) in lane C. Mock-transfected HEK293 probed with EB09823 (1mg/ml) in Lane B. Primary incubations were for 1 hour. Detected by chemiluminescence.