

UK Office

Everest Biotech Ltd

Cherwell Innovation Centre
77 Heyford Park
Upper Heyford
Oxfordshire
OX25 5HD
UK

Enquiries:

info@everestbiotech.com

Sales:

sales@everestbiotech.com

Tech support:

support@everestbiotech.com

Tel: +44 (0)1869 238326

www.everestbiotech.com

**Research Use Only. Not for
diagnostic or therapeutic use.**

EB06131 - Goat Anti-Cystatin B / Stefin B Antibody

Size: 100µg specific antibody in 200µl

Target Protein

Principal Names: CSTB, cystatin B (stefin B), PME, CST6, STFB, CPI-B, stefin B, liver thiol proteinase inhibitor, EPM1, cystatin B, CSTB, cystatin B (stefin B), PME, CST6, STFB, CPI-B, stefin B, liver thiol proteinase inhibitor, EPM1, cystatin B

Official Symbol: CSTB

Accession Number(s): NP_000091.1

Human GeneID(s): [1476](#)

Immunogen

Peptide with sequence C-QTNKAKHDELTYF, from the C Terminus of the protein sequence according to NP_000091.1.

Please note the [peptide](#) is available for sale.

Purification and Storage

Purified from goat serum by ammonium sulphate precipitation followed by antigen affinity chromatography using the immunizing peptide.

Supplied at 0.5 mg/ml in Tris saline, 0.02% sodium azide, pH7.3 with 0.5% bovine serum albumin.

Aliquot and store at -20°C. Minimize freezing and thawing.

Applications Tested

Peptide ELISA: antibody detection limit dilution 1:32000.

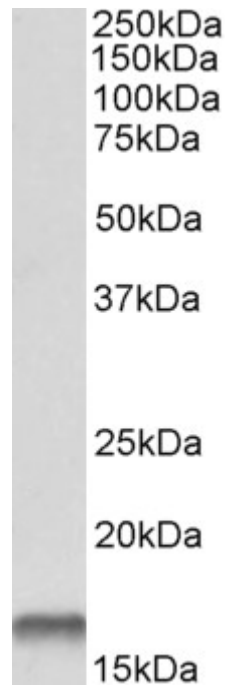
Western blot: Approx 16kDa band observed in Human Liver, Lung and Kidney Lysates (calculated MW of 11.1kDa according to NP_000091.1). The observed molecular weight corresponds to earlier findings in literature with with different antibodies (Lee et al, Clin Cancer Res. 2008 Feb 15;14(4):1080-9.; PMID: 18281540). Recommended concentration: 0.1-0.3µg/ml. Primary incubation was 1 hour.

IHC: Paraffin embedded Human Tonsil. Recommended concentration: 6-7µg/ml.

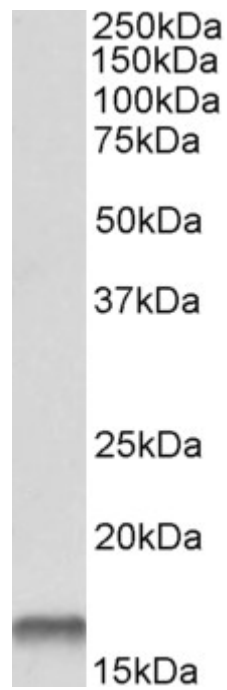
Species Reactivity

Tested: Human

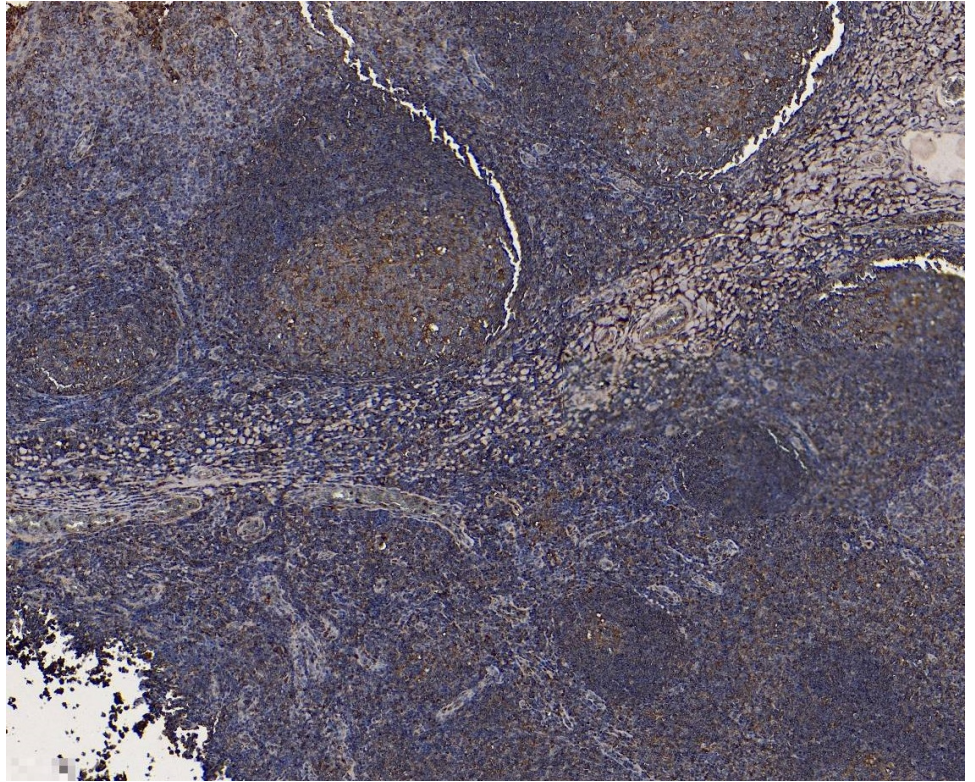
Expected from sequence similarity: Human



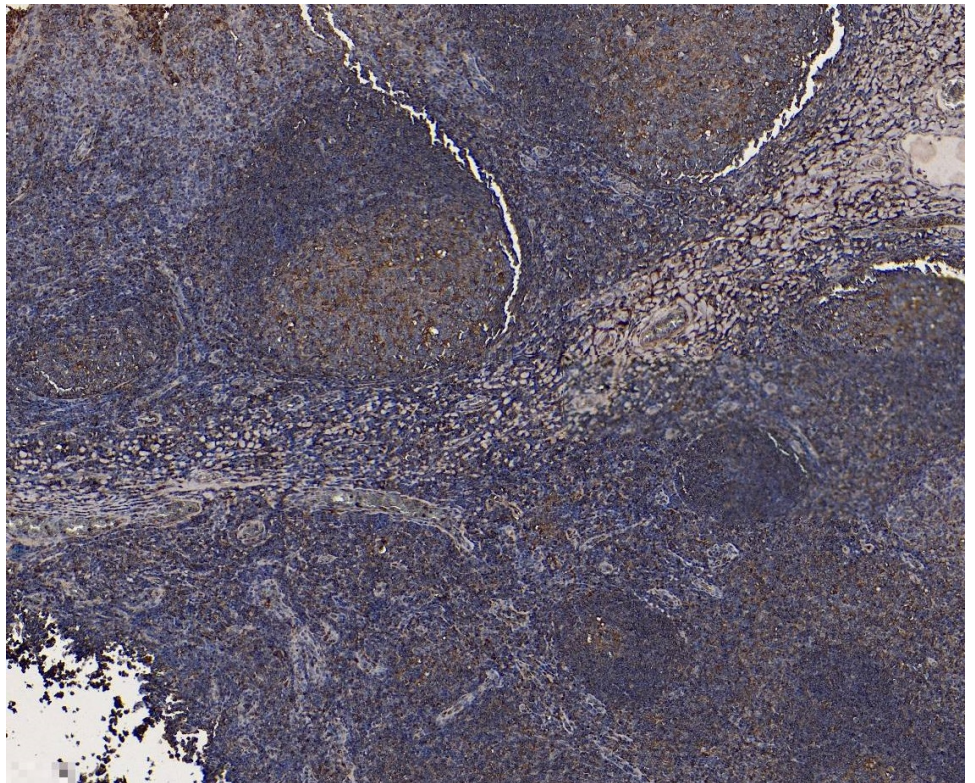
EB06131 (0.1µg/ml) staining of Human Lung Lysates (35µg protein in RIPA buffer). Detected by chemiluminescence.



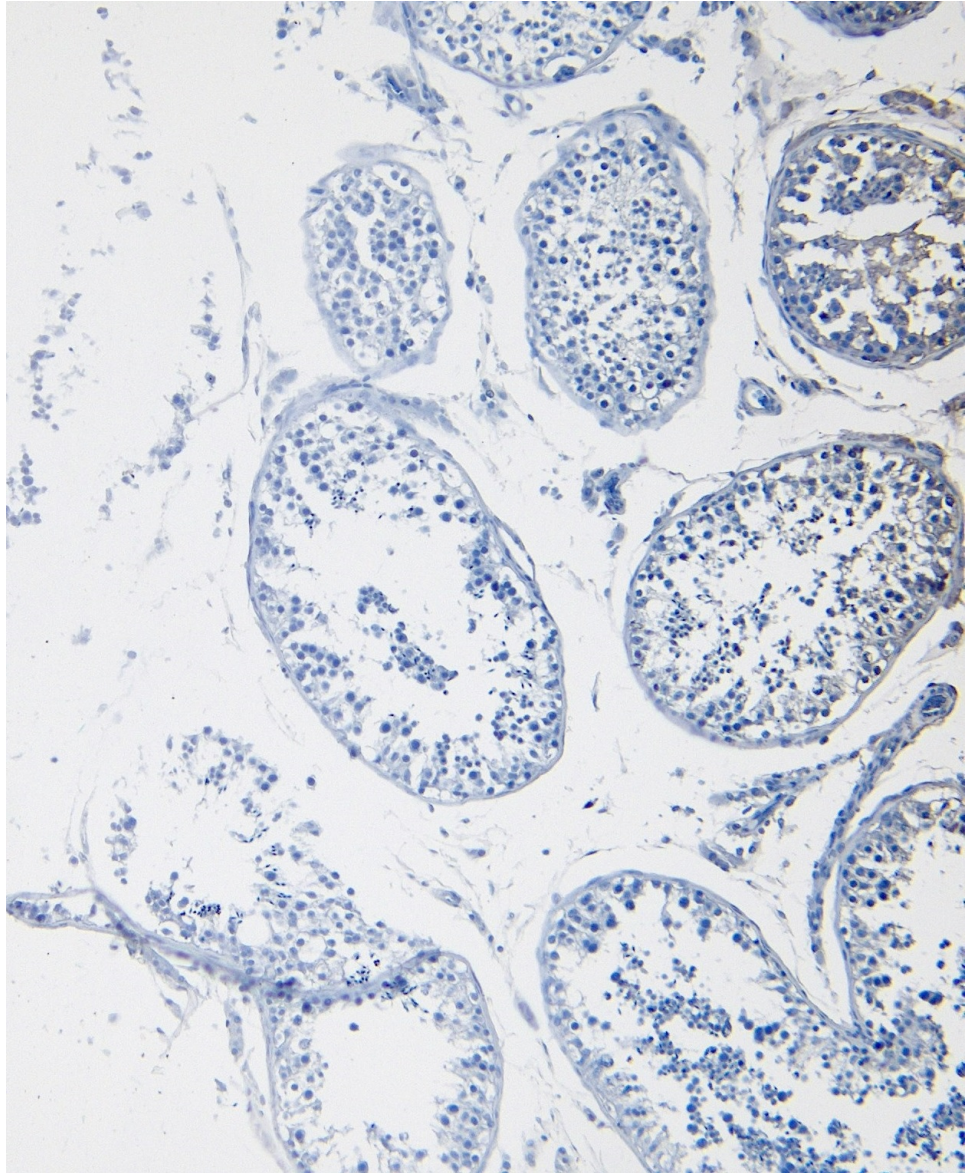
EB06131 (0.1µg/ml) staining of Human Lung Lysates (35µg protein in RIPA buffer). Detected by chemiluminescence.



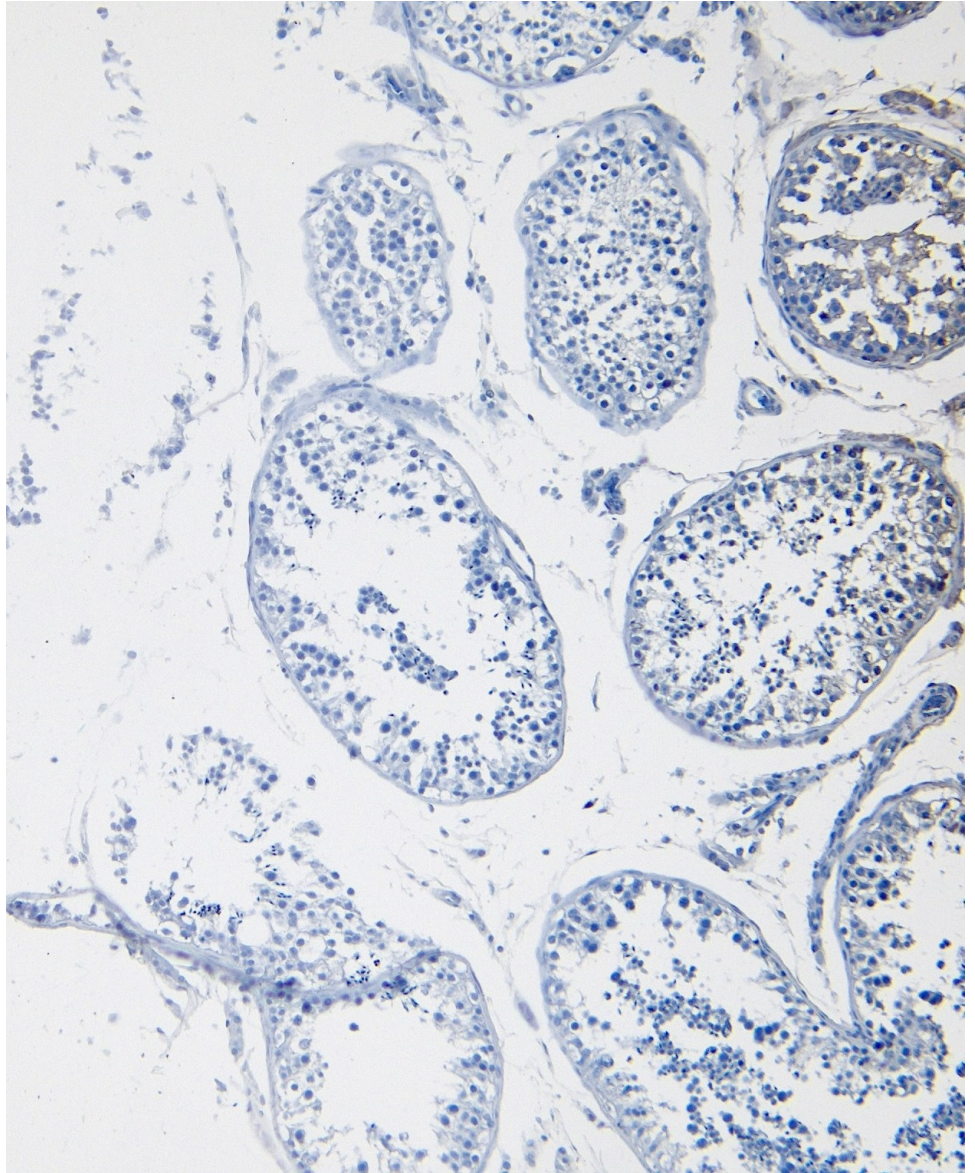
EB06131 (7µg/ml) staining of paraffin embedded Human Tonsil. Heat induced antigen retrieval with citrate buffer pH 6, HRP-staining.



EB06131 (7µg/ml) staining of paraffin embedded Human Tonsil. Heat induced antigen retrieval with citrate buffer pH 6, HRP-staining.



EB06131 Negative Control showing staining of paraffin embedded Human Tonsil, with no primary antibody.



EB06131 Negative Control showing staining of paraffin embedded Human Tonsil, with no primary antibody.