

## UK Office

### Everest Biotech Ltd

Cherwell Innovation Centre  
77 Heyford Park  
Upper Heyford  
Oxfordshire  
OX25 5HD  
UK

Enquiries:

[info@everestbiotech.com](mailto:info@everestbiotech.com)

Sales:

[sales@everestbiotech.com](mailto:sales@everestbiotech.com)

Tech support:

[support@everestbiotech.com](mailto:support@everestbiotech.com)

Tel: +44 (0)1869 238326

[www.everestbiotech.com](http://www.everestbiotech.com)

**Research Use Only. Not for  
diagnostic or therapeutic use.**

## EB05703 - Goat Anti-Cyt19 / AS3MT Antibody

Size: 100µg specific antibody in 200µl



### Target Protein

**Principal Names:** AS3MT, CYT19, Cyt19, Cyt19 protein, likely ortholog of rat methyltransferase Cyt19, S-adenosylmethionine:arsenic (III) methyltransferase, arsenic (+3 oxidation state) methyltransferase, RP11-753C18.6, 2310045H08Rik, methylarsonite methyltransferase, methyltransferase cyt19

**Official Symbol:** AS3MT

**Accession Number(s):** NP\_065733.2

**Human GeneID(s):** [57412](#)

### Immunogen

Peptide with sequence AALRD AEIQKDVQ-C, from the N Terminus of the protein sequence according to NP\_065733.2.

Please note the [peptide](#) is available for sale.

### Purification and Storage

Purified from goat serum by ammonium sulphate precipitation followed by antigen affinity chromatography using the immunizing peptide.

Supplied at 0.5 mg/ml in Tris saline, 0.02% sodium azide, pH7.3 with 0.5% bovine serum albumin.

Aliquot and store at -20°C. Minimize freezing and thawing.

### Applications Tested

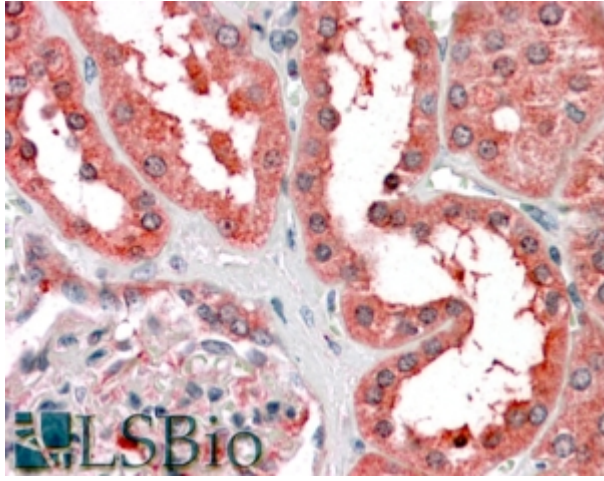
**Peptide ELISA:** antibody detection limit dilution 1:32000.

**IHC:** In paraffin embedded Human Kidney shows cytoplasm staining of epithelial cells with some emphasis on the luminal side of the DCT.. Recommended concentration, 3-6µg/ml.

### Species Reactivity

**Tested:**

**Expected from sequence similarity:** Human



EB05703 (3.8µg/ml) staining of paraffin embedded Human Kidney. Steamed antigen retrieval with citrate buffer pH 6, AP-staining.