



## International Office

### Everest Biotech Ltd

Vector Laboratories, Inc.  
6737 Mowry Ave  
Newark, CA 94560  
United States

Customer Service:

[customerservice@vectorlabs.com](mailto:customerservice@vectorlabs.com)

Technical Service:

[technical@vectorlabs.com](mailto:technical@vectorlabs.com)

Tel: +1 (800) 227-6666

[www.everestbiotech.com](http://www.everestbiotech.com)

**Research Use Only. Not for  
diagnostic or therapeutic use.**

## EB11173 - Goat Anti-cytochrome P450 1A1 (mouse) Antibody

Size: 100µg specific antibody in 200µl



### Target Protein

**Principal Names:** AHH, AHRR, aromatic compound inducible, CP11, Cyp1a2, CYPIA1, cytochrome P450 1A1, cytochrome P450 family 1 subfamily a polypeptide 2, cytochrome P450 subfamily I, polypeptide 1, cytochrome P450, 1a1, aromatic compound inducible, cytochrome P450, family 1, subfamily A, polypeptide 1, cytochrome P450-P1, P450-1, cyp1a1

**Official Symbol:** cyp1a1

**Accession Number(s):** NP\_001129531.1

**Non-Human GeneID(s):** 13076 (mouse), 24296 (rat)

**Important Comments:** This antibody is not expected to cross-react with the similar P450 1A2

### Immunogen

Peptide with sequence C-QDRKLDENANVQLSD, from the internal region of the protein sequence according to NP\_001129531.1.

Please note the [peptide](#) is available for sale.

### Purification and Storage

Purified from goat serum by ammonium sulphate precipitation followed by antigen affinity chromatography using the immunizing peptide.

Supplied at 0.5 mg/ml in Tris saline, 0.02% sodium azide, pH7.3 with 0.5% bovine serum albumin.

Aliquot and store at -20°C. Minimize freezing and thawing.

### Applications Tested

**Peptide ELISA:** antibody detection limit dilution 1:64000.

**Western blot:** Approx 55kDa band observed in Human and Rat Lung lysates (calculated MW of 58.2kDa according to Human NP\_000490.1 and 59.4kDa according to Rat NP\_036672.). Primary incubation was 1 hour. Recommended concentration: 0.1-0.3µg/ml.

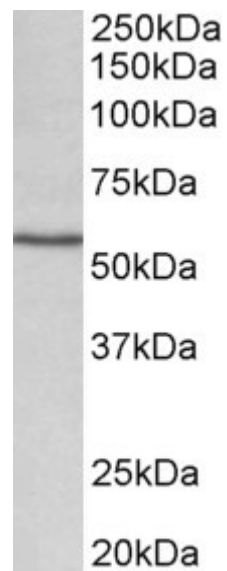
**IHC:** Paraffin embedded Human Tonsil. Recommended concentration: 10µg/ml.

**Immunofluorescence:** Strong expression of the protein seen in the ER and cytoplasm of NIH3T3 cells. Recommended concentration: 10µg/ml.

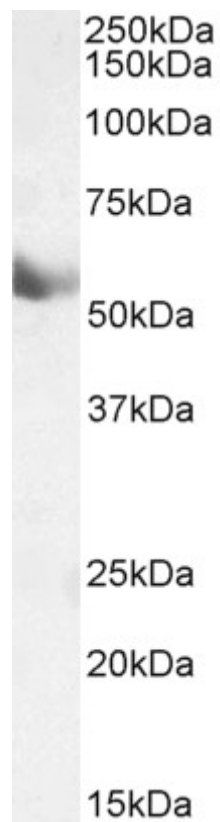
### Species Reactivity

**Tested:** Human, Mouse, Rat

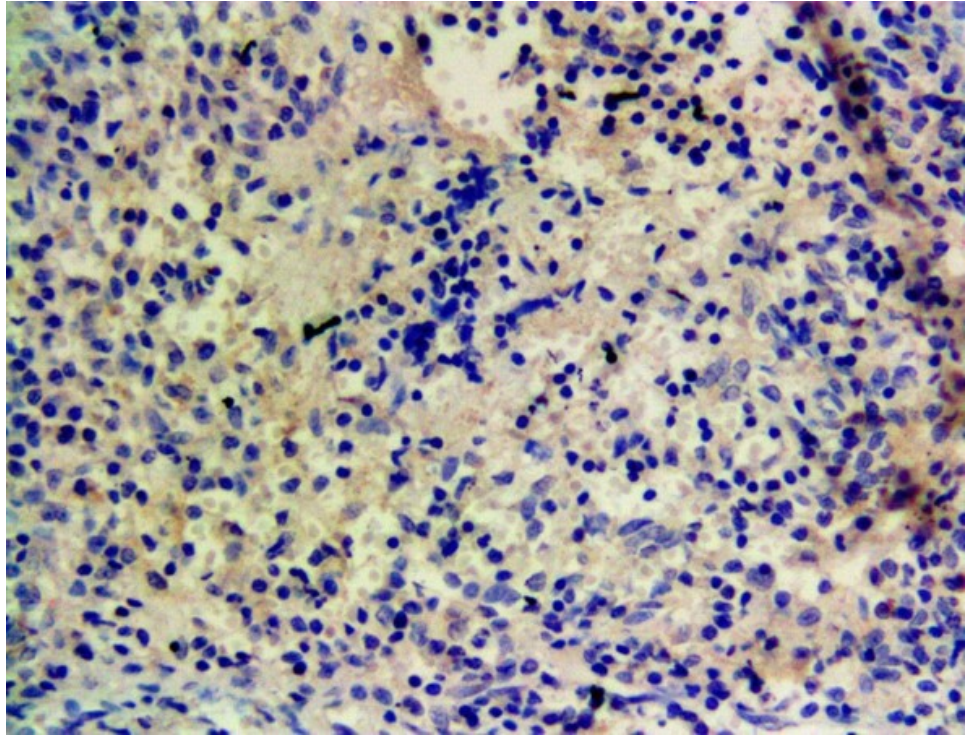
**Expected from sequence similarity:** Mouse, Rat



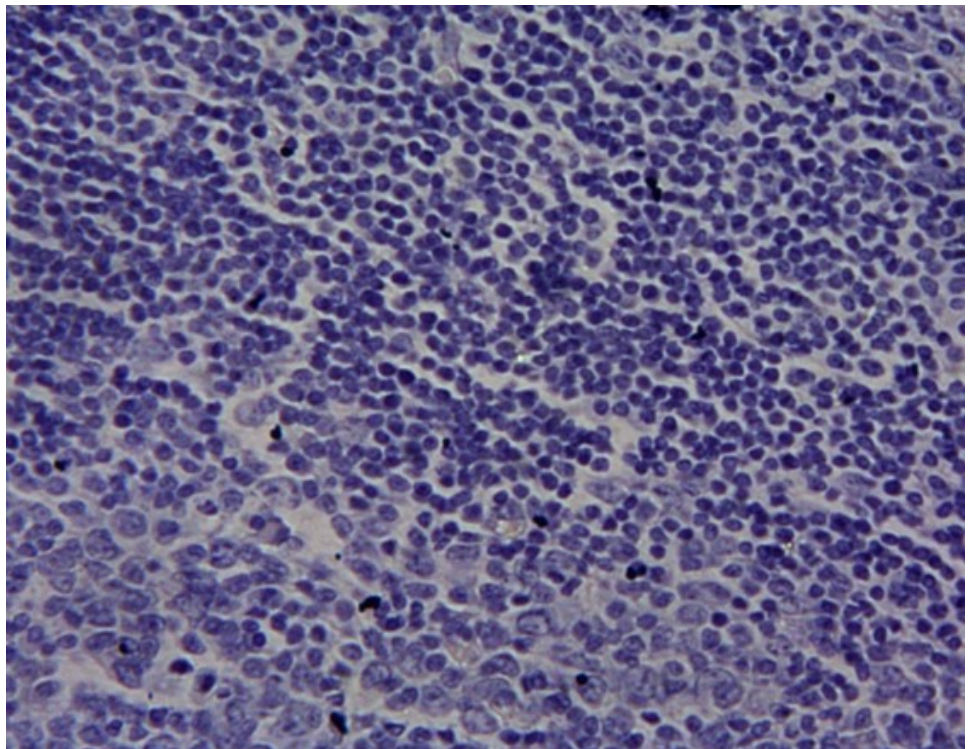
EB11173 (0.1 $\mu$ g/ml) staining of Rat Lung lysate (35 $\mu$ g protein in RIPA buffer). Detected by chemiluminescence.



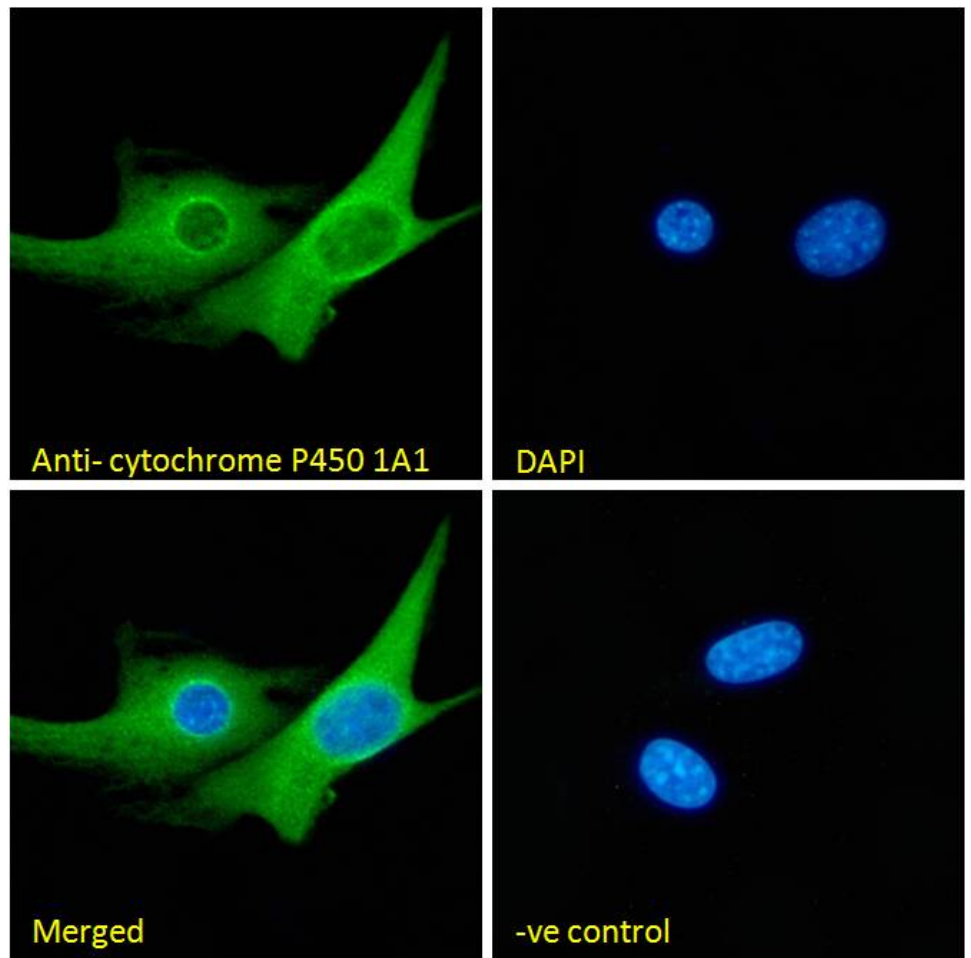
EB11173 (0.1 $\mu$ g/ml) staining of Human Lung lysate (35 $\mu$ g protein in RIPA buffer). Detected by chemiluminescence.



EB11173 Staining of paraffin embedded Human Tonsil. Heat induced antigen retrieval with Tris-EDTA pH 9, HRP-Staining (1:500)



EB11173 Negative Control showing staining of paraffin embedded Human Tonsil, with no primary antibody.



EB11173 Immunofluorescence analysis of paraformaldehyde fixed NIH3T3 cells, permeabilized with 0.15% Triton. Primary incubation 1hr (10ug/ml) followed by Alexa Fluor 488 secondary antibody (2ug/ml), showing endoplasmic reticulum and cytoplasmic staining. The nuclear stain is DAPI (blue). Negative control: Unimmunized goat IgG (10ug/ml) followed by Alexa Fluor 488 secondary antibody (2ug/ml).