

## UK Office

### Everest Biotech Ltd

Cherwell Innovation Centre  
77 Heyford Park  
Upper Heyford  
Oxfordshire  
OX25 5HD  
UK

Enquiries:

[info@everestbiotech.com](mailto:info@everestbiotech.com)

Sales:

[sales@everestbiotech.com](mailto:sales@everestbiotech.com)

Tech support:

[support@everestbiotech.com](mailto:support@everestbiotech.com)

Tel: +44 (0)1869 238326

[www.everestbiotech.com](http://www.everestbiotech.com)

**Research Use Only. Not for  
diagnostic or therapeutic use.**

## EB11171 - Goat Anti-Cytochrome P450 1A2 (mouse) Antibody

Size: 100µg specific antibody in 200µl



### Target Protein

**Principal Names:** aromatic compound inducible, CP12, Cyp1a1, CYPIA2, cytochrome P450 1A2, cytochrome P450 family 1 subfamily a polypeptide 1, cytochrome P450, 1a2, aromatic compound inducible, cytochrome P450, family 1, subfamily A, polypeptide 2, cytochrome P450-P2, cytochrome P450-P3, P450-3, Cyp1a2

**Official Symbol:** Cyp1a2

**Accession Number(s):** NP\_034123.1

**Non-Human GeneID(s):** 13077 (mouse), 24297 (rat)

**Important Comments:** This antibody is not expected to cross-react to the similar P450 1A1.

### Immunogen

Peptide with sequence C-HSENYKDNGGLIPEEK, from the internal region of the protein sequence according to NP\_034123.1.

Please note the [peptide](#) is available for sale.

### Purification and Storage

Purified from goat serum by ammonium sulphate precipitation followed by antigen affinity chromatography using the immunizing peptide.

Supplied at 0.5 mg/ml in Tris saline, 0.02% sodium azide, pH7.3 with 0.5% bovine serum albumin.

Aliquot and store at -20°C. Minimize freezing and thawing.

### Applications Tested

**Peptide ELISA:** antibody detection limit dilution 1:32000.

**Western blot:** Approx 60kDa band observed in Mouse fetal Liver lysates and approx. 55kDa in Human Liver and Lung lysates (calculated MW of 58.4kDa according to Human NP\_000752.2 and 58.2kDa according to Mouse NP\_034123.1). Recommended concentration: 0.3-1µg/ml. Primary incubation was 1 hour. This antibody has been successfully used in WB on Rat Liver lysates, PMID: 35094979.

### Species Reactivity

**Tested:** Human, Mouse, Rat

**Expected from sequence similarity:** Mouse, Rat

### Specific Reference

**This antibody has been successfully used in Western blot on Rat:**

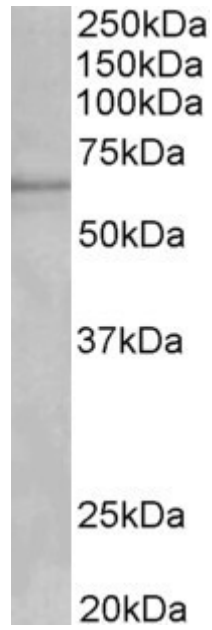
James R Reed, Jessie J Guidry, Wayne L Backes

Proteomic and Bioinformatics Analysis of Membrane Lipid Domains after Brij 98

Solubilization of Uninduced and Phenobarbital-Induced Rat Liver Microsomes: Defining the Membrane Localization of the P450 Enzyme System

Drug Metab Dispos. 2022 Apr;50(4):374-385.

PMID: 35094979



EB11171 (1 $\mu$ g/ml) staining of fetal Mouse Liver lysate (35 $\mu$ g protein in RIPA buffer). Detected by chemiluminescence.



EB11171 (0.5 $\mu$ g/ml) staining of Human Liver (A) and (1 $\mu$ g/ml) Lung (B) lysate (35 $\mu$ g protein in RIPA buffer). Detected by chemiluminescence.