

## UK Office

### Everest Biotech Ltd

Cherwell Innovation Centre  
77 Heyford Park  
Upper Heyford  
Oxfordshire  
OX25 5HD  
UK

Enquiries:

[info@everestbiotech.com](mailto:info@everestbiotech.com)

Sales:

[sales@everestbiotech.com](mailto:sales@everestbiotech.com)

Tech support:

[support@everestbiotech.com](mailto:support@everestbiotech.com)

Tel: +44 (0)1869 238326

[www.everestbiotech.com](http://www.everestbiotech.com)

**Research Use Only. Not for  
diagnostic or therapeutic use.**

## EB11077 - Goat Anti-cytochrome P450 2C8 Antibody

Size: 100µg specific antibody in 200µl



### Target Protein

**Principal Names:** CPC8, CYP11C8, cytochrome P450 2C8, cytochrome P450 form 1, cytochrome P450 IIC2, cytochrome P450 MP-12, cytochrome P450 MP-20, cytochrome P450, family 2, subfamily C, polypeptide 8, cytochrome P450, subfamily IIC (mephenytoin 4-hydroxylase), polypeptide 8, flavoprotein-linked monooxygenase, microsomal monooxygenase, MP-12/MP-20, P450 form 1, s-mephenytoin 4-hydroxylase, xenobiotic monooxygenase, CYP2C8

**Official Symbol:** CYP2C8

**Accession Number(s):** NP\_000761.3; NP\_001185782.1; NP\_001185783.1

**Human GeneID(s):** [1558](#)

**Important Comments:** This antibody is expected to recognize all reported isoforms (NP\_000761.3; NP\_001185782.1; NP\_001185783.1). No cross-reactivity with other 2C proteins expected. Reported variants represent identical protein: NP\_001185782.1, NP\_001185784.1

### Immunogen

Peptide with sequence C-KNVALTRSYIREK, from the internal region of the protein sequence according to NP\_000761.3; NP\_001185782.1; NP\_001185783.1.

Please note the [peptide](#) is available for sale.

### Purification and Storage

Purified from goat serum by ammonium sulphate precipitation followed by antigen affinity chromatography using the immunizing peptide.

Supplied at 0.5 mg/ml in Tris saline, 0.02% sodium azide, pH7.3 with 0.5% bovine serum albumin.

Aliquot and store at -20°C. Minimize freezing and thawing.

### Applications Tested

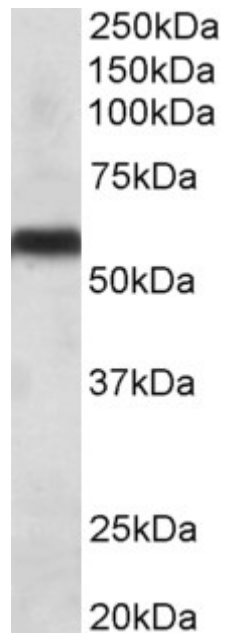
**Peptide ELISA:** antibody detection limit dilution 1:32000.

**Western blot:** Approx 55kDa band observed in Human Liver lysates (calculated MW of 55.8kDa according to NP\_000761.3). Recommended concentration: 0.1-0.3µg/ml. Primary incubation 1 hour at room temperature.

### Species Reactivity

**Tested:** Human

**Expected from sequence similarity:** Human



EB11077 (0.1 $\mu$ g/ml) staining of Human Liver lysate (35 $\mu$ g protein in RIPA buffer). Primary incubation was 1 hour.  
Detected by chemiluminescence.