



UK Office

Everest Biotech Ltd

Cherwell Innovation Centre
77 Heyford Park
Upper Heyford
Oxfordshire
OX25 5HD
UK

Enquiries:

info@everestbiotech.com

Sales:

sales@everestbiotech.com

Tech support:

support@everestbiotech.com

Tel: +44 (0)1869 238326

Fax: +44 (0)1869 238327

US Office

Everest Biotech c/o Abcore

405 Maple Street, Suite A106
Ramona,
CA 92065
USA

Inquiries:

info@everestbiotech.com

Sales:

usasales@everestbiotech.com

Tech support:

support@everestbiotech.com

Tel: 888-320-4628 (toll-free)

Fax: 888-841-9041

www.everestbiotech.com

**Research Use Only. Not for
diagnostic or therapeutic use.**

EB11077 - Goat Anti-cytochrome P450 2C8 Antibody

Size: 100µg specific antibody in 200µl



Target Protein

Principal Names: CPC8, CYP11C8, cytochrome P450 2C8, cytochrome P450 form 1, cytochrome P450 IIC2, cytochrome P450 MP-12, cytochrome P450 MP-20, cytochrome P450, family 2, subfamily C, polypeptide 8, cytochrome P450, subfamily IIC (mephenytoin 4-hydroxylase), polypeptide 8, flavoprotein-linked monooxygenase, microsomal monooxygenase, MP-12/MP-20, P450 form 1, s-mephenytoin 4-hydroxylase, xenobiotic monooxygenase, CYP2C8

Official Symbol: CYP2C8

Accession Number(s): NP_000761.3; NP_001185782.1; NP_001185783.1

Human GeneID(s): [1558](#)

Important Comments: This antibody is expected to recognize all reported isoforms (NP_000761.3; NP_001185782.1; NP_001185783.1). No cross-reactivity with other 2C proteins expected. Reported variants represent identical protein: NP_001185782.1, NP_001185784.1

Immunogen

Peptide with sequence C-KNVALTRSYIREK, from the internal region of the protein sequence according to NP_000761.3; NP_001185782.1; NP_001185783.1.

Please note the [peptide](#) is available for sale.

Purification and Storage

Purified from goat serum by ammonium sulphate precipitation followed by antigen affinity chromatography using the immunizing peptide.

Supplied at 0.5 mg/ml in Tris saline, 0.02% sodium azide, pH7.3 with 0.5% bovine serum albumin.

Aliquot and store at -20°C. Minimize freezing and thawing.

Applications Tested

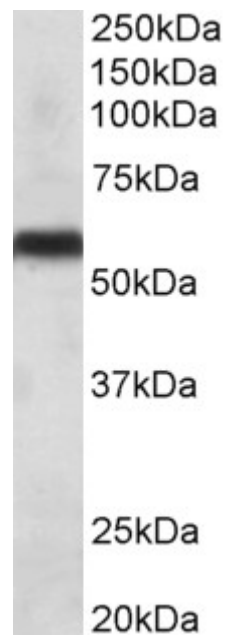
Peptide ELISA: antibody detection limit dilution 1:32000.

Western blot: Approx 55kDa band observed in Human Liver lysates (calculated MW of 55.8kDa according to NP_000761.3). Recommended concentration: 0.1-0.3µg/ml. Primary incubation 1 hour at room temperature.

Species Reactivity

Tested: Human

Expected from sequence similarity: Human



EB11077 (0.1µg/ml) staining of Human Liver lysate (35µg protein in RIPA buffer). Primary incubation was 1 hour.
Detected by chemiluminescence.