



UK Office

Everest Biotech Ltd

Cherwell Innovation Centre
77 Heyford Park
Upper Heyford
Oxfordshire
OX25 5HD
UK

Enquiries:

info@everestbiotech.com

Sales:

sales@everestbiotech.com

Tech support:

support@everestbiotech.com

Tel: +44 (0)1869 238326

Fax: +44 (0)1869 238327

US Office

Everest Biotech c/o Abcore

405 Maple Street, Suite A106
Ramona,
CA 92065
USA

Inquiries:

info@everestbiotech.com

Sales:

usasales@everestbiotech.com

Tech support:

support@everestbiotech.com

Tel: 888-320-4628 (toll-free)

Fax: 888-841-9041

www.everestbiotech.com

**Research Use Only. Not for
diagnostic or therapeutic use.**

EB12360 - Goat Anti-cytokeratin 19 Antibody

Size: 100µg specific antibody in 200µl



Target Protein

Principal Names: KRT19, keratin 19, CK19, K19, K1CS, 40-kDa keratin intermediate filament, CK-19, cytokeratin 19, cytokeratin-19, keratin, type I cytoskeletal 19, keratin, type I, 40-kd, keratin-19

Official Symbol: KRT19

Accession Number(s): NP_002267.2

Human GeneID(s): [3880](#)

Immunogen

Peptide with sequence C-EGQEDHYNLSASK, from the C Terminus of the protein sequence according to NP_002267.2.

Please note the [peptide](#) is available for sale.

Purification and Storage

Purified from goat serum by ammonium sulphate precipitation followed by antigen affinity chromatography using the immunizing peptide.

Supplied at 0.5 mg/ml in Tris saline, 0.02% sodium azide, pH7.3 with 0.5% bovine serum albumin.

Aliquot and store at -20°C. Minimize freezing and thawing.

Applications Tested

Peptide ELISA: antibody detection limit dilution 1:64000.

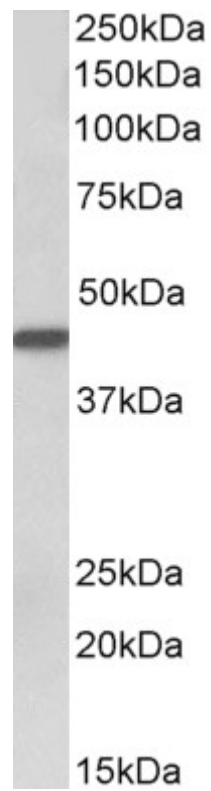
Western blot: Approx 43kDa band observed in Human cancer lysates of Breast, Pancreas and Colon (calculated MW of 44.1kDa according to NP_002267.2). Recommended concentration: 0.03-0.1µg/ml. Primary incubation was 1 hour.

IHC: Paraffin embedded Human Liver. Recommended concentration: 5µg/ml.

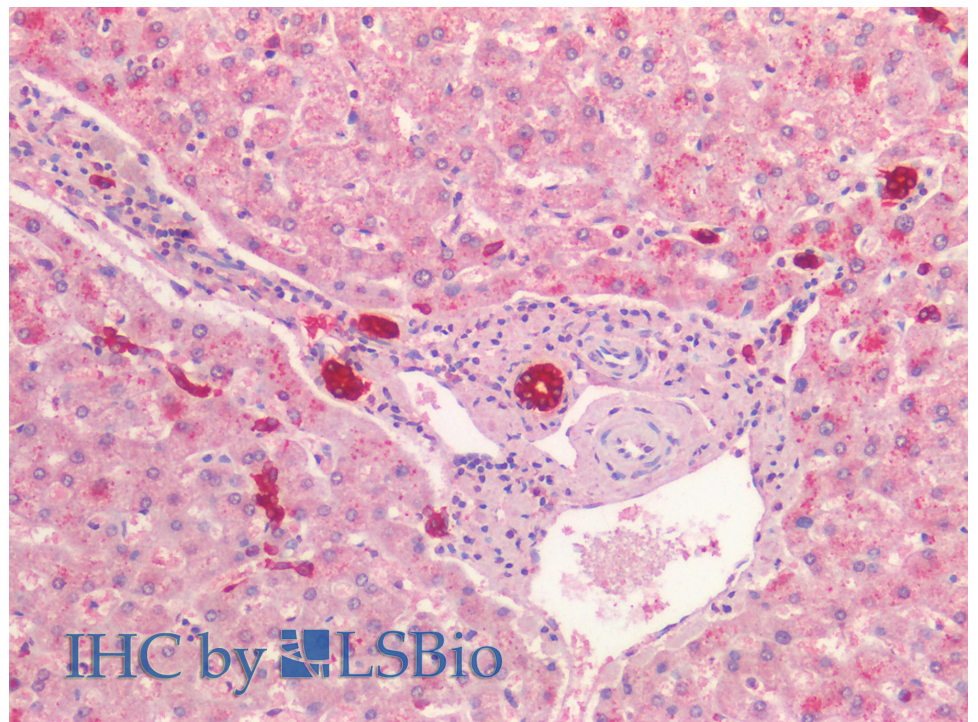
Species Reactivity

Tested: Human

Expected from sequence similarity: Human



E12360 (0.1µg/ml) staining of Human Breast cancer lysate (35µg protein in RIPA buffer). Detected by chemiluminescence.



EB12360 (5µg/ml) staining of paraffin embedded Human Liver. Steamed antigen retrieval with citrate buffer pH 6, AP-staining.