



UK Office

Everest Biotech Ltd

Cherwell Innovation Centre
77 Heyford Park
Upper Heyford
Oxfordshire
OX25 5HD
UK

Enquiries:

info@everestbiotech.com

Sales:

sales@everestbiotech.com

Tech support:

support@everestbiotech.com

Tel: +44 (0)1869 238326

www.everestbiotech.com

**Research Use Only. Not for
diagnostic or therapeutic use.**

EB11745 - Goat Anti-Cytokeratin 20 Antibody

Size: 100µg specific antibody in 200µl



Target Protein

Principal Names: CK20, CK-20, cytokeratin 20, cytokeratin-20, K20, keratin 20, keratin, type I cytoskeletal 20, keratin-20, KRT20, KRT21, MGC35423, protein IT

Official Symbol: KRT20

Accession Number(s): NP_061883.1

Human GeneID(s): [54474](#)

Immunogen

Peptide with sequence C-ETNAPRAGRDIS, from the internal region of the protein sequence according to NP_061883.1.

Please note the [peptide](#) is available for sale.

Purification and Storage

Purified from goat serum by ammonium sulphate precipitation followed by antigen affinity chromatography using the immunizing peptide.

Supplied at 0.5 mg/ml in Tris saline, 0.02% sodium azide, pH7.3 with 0.5% bovine serum albumin.

Aliquot and store at -20°C. Minimize freezing and thawing.

Applications Tested

Peptide ELISA: antibody detection limit dilution 1:128000.

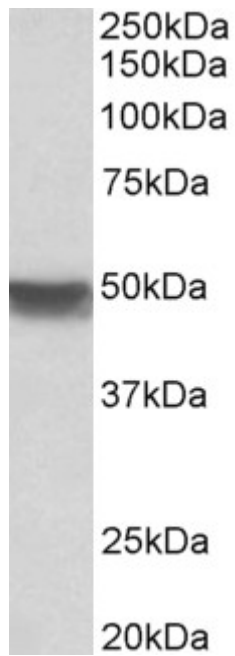
Western blot: Approx 49kDa band observed in Human Colon and Ileum lysates (calculated MW of 48.5kDa according to NP_061883.1). Recommended concentration: 0.01-0.03µg/ml. Primary incubation was 1 hour.

IHC: Paraffin embedded Human Colon. Recommended concentration: 5µg/ml.

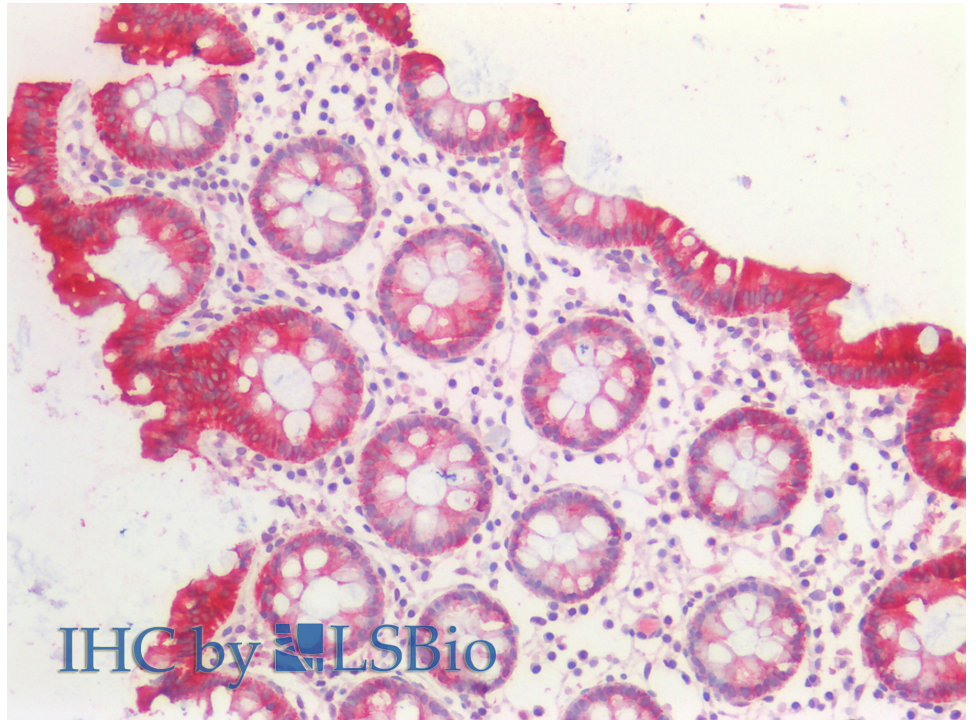
Species Reactivity

Tested: Human

Expected from sequence similarity: Human



EB11745 (0.03 μ g/ml) staining of Human Colon lysate (35 μ g protein in RIPA buffer). Detected by chemiluminescence.



EB11745 (5 μ g/ml) staining of paraffin embedded Human Colon. Steamed antigen retrieval with citrate buffer pH 6, AP-staining.