



## International Office

### Everest Biotech Ltd

Vector Laboratories, Inc.  
6737 Mowry Ave  
Newark, CA 94560  
United States

Customer Service:

[customerservice@vectorlabs.com](mailto:customerservice@vectorlabs.com)

Technical Service:

[technical@vectorlabs.com](mailto:technical@vectorlabs.com)

Tel: +1 (800) 227-6666

[www.everestbiotech.com](http://www.everestbiotech.com)

**Research Use Only. Not for  
diagnostic or therapeutic use.**

## EB11745-B - Goat Anti-Cytokeratin 20, Biotinylated Antibody

Size: 100µg specific antibody in 200µl



### Target Protein

**Principal Names:** KRT20, keratin 20, type I, CK-20, CK20, K20, KRT21, cytokeratin 20, cytokeratin-20, keratin-20, protein IT, keratin, type I cytoskeletal 20

**Official Symbol:** KRT20

**Accession Number(s):** NP\_061883.1

**Human GeneID(s):** [54474](#)

### Immunogen

Peptide with sequence C-ETNAPRAGRDIS., from the internal region of the protein sequence according to NP\_061883.1.

Please note the [peptide](#) is available for sale.

### Purification and Storage

Purified from goat serum by ammonium sulphate precipitation followed by antigen affinity chromatography using the immunizing peptide.

Supplied at 0.5 mg/ml in Tris saline, 0.02% sodium azide, pH7.3 with 0.5% bovine serum albumin.

Aliquot and store at -20°C. Minimize freezing and thawing.

### Applications Tested

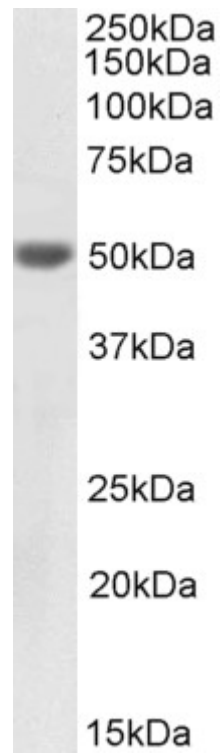
**Peptide ELISA:** antibody detection limit dilution 1:128000.

**Western blot:** Approx 49kDa band observed in Human Colon lysates (calculated MW of 48.5kDa according to NP\_061883.1). See non-biotinylated parental product's datasheet for further QC data. Recommended concentration: 1-3µg/ml.

### Species Reactivity

**Tested:** Human

**Expected from sequence similarity:** Human



Biotinylated EB11745 (1 $\mu$ g/ml) staining of Human Colon lysate (35 $\mu$ g protein in RIPA buffer), exactly mirroring its parental non-biotinylated product. Primary incubation was 1 hour. Detected by chemiluminescence, using streptavidin-HRP and using NAP blocker as a substitute for skimmed milk.