



UK Office

Everest Biotech Ltd

Cherwell Innovation Centre
77 Heyford Park
Upper Heyford
Oxfordshire
OX25 5HD
UK

Enquiries:

info@everestbiotech.com

Sales:

sales@everestbiotech.com

Tech support:

support@everestbiotech.com

Tel: +44 (0)1869 238326

www.everestbiotech.com

**Research Use Only. Not for
diagnostic or therapeutic use.**

EB08438 - Goat Anti-Dachshund homolog 1 Antibody

Size: 100µg specific antibody in 200µl



Target Protein

Principal Names: OTTHUMP00000040839, dachshund homolog 1 (Drosophila), DACH1, RP11-512J14.1, DACH, FLJ10138, dachshund homolog 1

Official Symbol: DACH1

Accession Number(s): NP_542937.1; NP_542938.1; NP_004383.2

Human GeneID(s): [1602](#)

Non-Human GeneID(s): 13134 (mouse)

Important Comments: This antibody is expected to recognise all three reported isoforms(NP_542937.1; NP_542938.1; NP_004383.2).

Immunogen

Peptide with sequence SPVENTPQNNECK, from the internal region of the protein sequence according to NP_542937.1; NP_542938.1; NP_004383.2.

Please note the [peptide](#) is available for sale.

Purification and Storage

Purified from goat serum by ammonium sulphate precipitation followed by antigen affinity chromatography using the immunizing peptide.

Supplied at 0.5 mg/ml in Tris saline, 0.02% sodium azide, pH7.3 with 0.5% bovine serum albumin.

Aliquot and store at -20°C. Minimize freezing and thawing.

Applications Tested

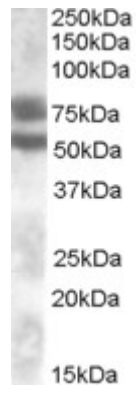
Peptide ELISA: antibody detection limit dilution 1:16000.

Western blot: Approx 75 and 52kDa bands observed in Human Kidney lysates (calculated MW of 73.0kDa according to NP_542937.1 and of 51.9kDa according to NP_004383.2). Recommended concentration: 0.1-0.3µg/ml.

Species Reactivity

Tested: Human

Expected from sequence similarity: Human, Mouse, Rat, Dog, Pig



EB08438 (0.1µg/ml) staining of Human Kidney lysate (35µg protein in RIPA buffer). Primary incubation was 1 hour. Detected by chemiluminescence.