



International Office

Everest Biotech Ltd

Vector Laboratories, Inc.
6737 Mowry Ave
Newark, CA 94560
United States

Customer Service:

customerservice@vectorlabs.com

Technical Service:

technical@vectorlabs.com

Tel: +1 (800) 227-6666

www.everestbiotech.com

**Research Use Only. Not for
diagnostic or therapeutic use.**

EB05427 - Goat Anti-DAP3 Antibody

Size: 100µg specific antibody in 200µl



Target Protein

Principal Names: DAP3, death associated protein 3, DAP-3, DKFZp686G12159, MGC126058, MGC126059, MRP-S29, MRPS29, bMRP-10, death-associated protein 3, mitochondrial 28S ribosomal protein S29

Official Symbol: DAP3

Accession Number(s): NP_387506.1; NP_001186779.1; NP_001186780.1

Human GeneID(s): [7818](#)

Important Comments: This antibody is expected to recognise isoform 1 (NP_387506.1), isoform 2 (NP_001186779.1) and isoform 3 (NP_001186780.1). Reported variants represent identical protein (NP_387506.1; NP_004623.1; NP_001186778.1).

Immunogen

Peptide with sequence NPSLLERHCAYL, from the C Terminus of the protein sequence according to NP_387506.1; NP_001186779.1; NP_001186780.1.

Please note the [peptide](#) is available for sale.

Purification and Storage

Purified from goat serum by ammonium sulphate precipitation followed by antigen affinity chromatography using the immunizing peptide.

Supplied at 0.5 mg/ml in Tris saline, 0.02% sodium azide, pH7.3 with 0.5% bovine serum albumin.

Aliquot and store at -20°C. Minimize freezing and thawing.

Applications Tested

Peptide ELISA: antibody detection limit dilution 1:64000.

Western blot: Approx 40kDa band observed in lysates of cell lines HeLa and HepG2 and in Human Kidney lysates (calculated MW of 41kDa according to NP_001186779.1 and NP_001186780). Recommended concentration: 0.1-1µg/ml. Primary incubated 1 hour at room temperature.

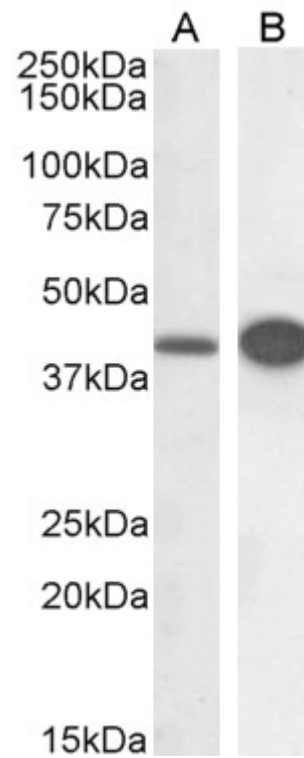
IHC: Paraffin embedded Human Kidney. Recommended concentration: 5µg/ml.

Immunofluorescence: Strong expression of the protein seen in the nuclei of MCF7 cells. Recommended concentration: 10µg/ml.

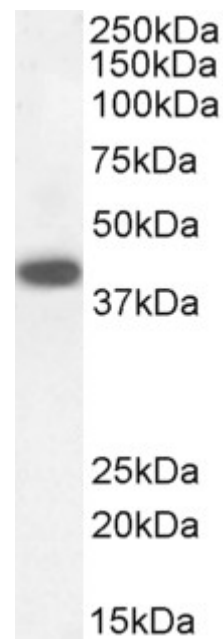
Species Reactivity

Tested: Human

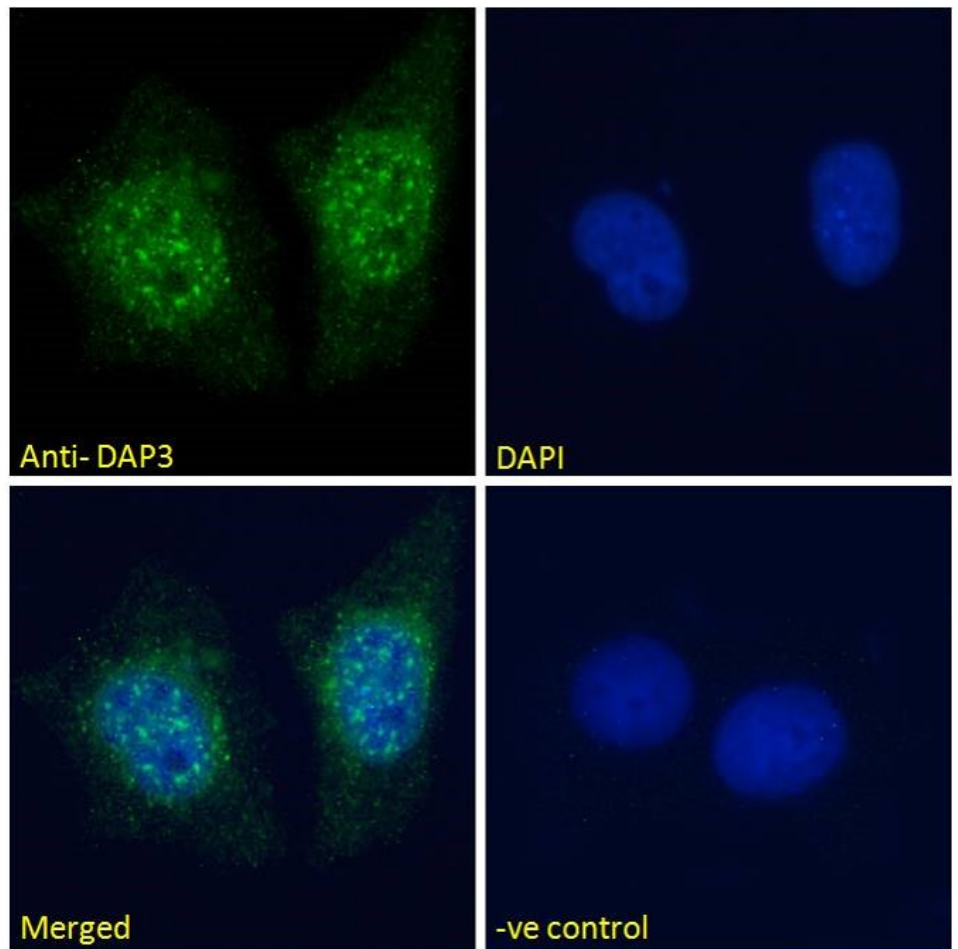
Expected from sequence similarity: Human



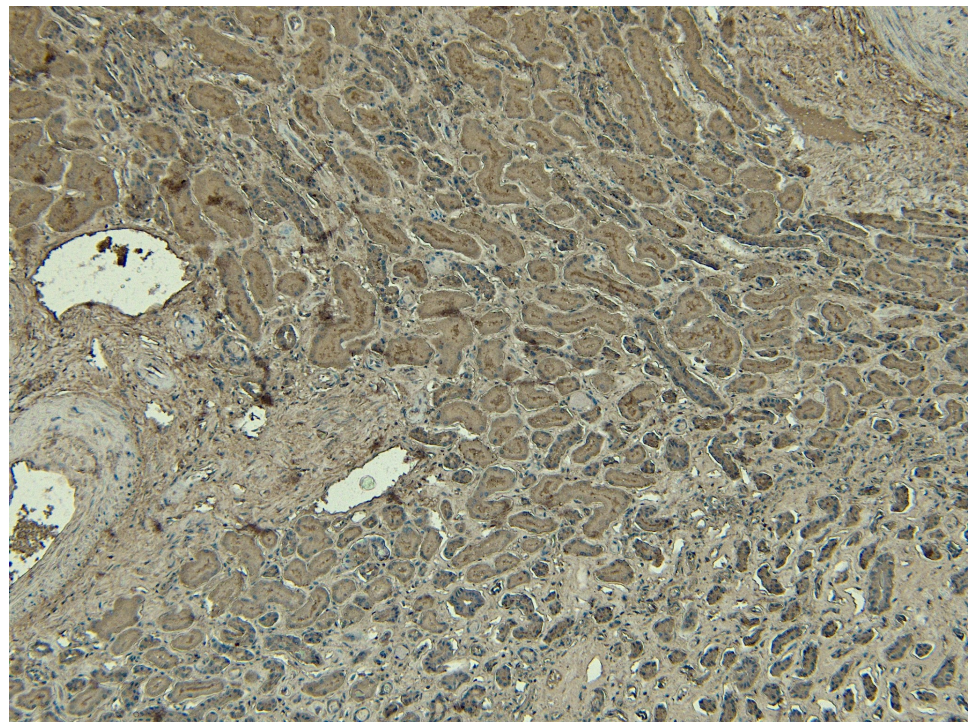
EB05427 (0.3 μ g/ml) staining of HeLa (A) and HepG2 (B) cell lysate (RIPA buffer, 30 μ g total protein per lane). Detected by chemiluminescence.



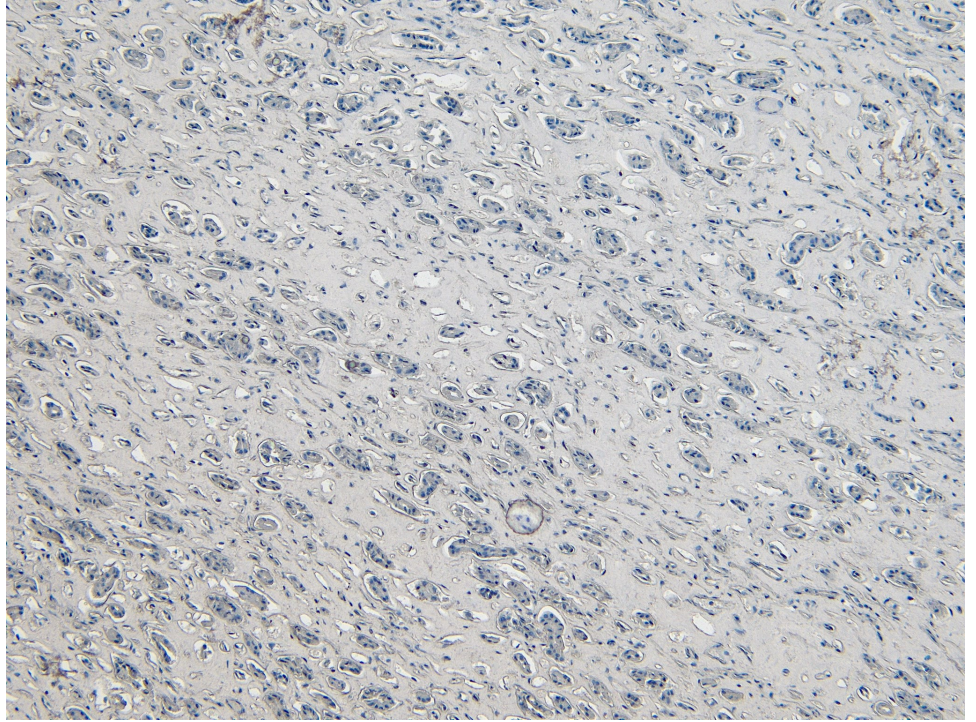
EB05427 staining (0.3 μ g/ml) of Human Kidney lysate (RIPA buffer, 30 μ g total protein per lane). Detected by chemiluminescence.



EB05427 Immunofluorescence analysis of paraformaldehyde fixed MCF7 cells, permeabilized with 0.15% Triton. Primary incubation 1hr (10ug/ml) followed by Alexa Fluor 488 secondary antibody (2ug/ml), showing nuclear staining. The nuclear stain is DAPI (blue). Negative control: Unimmunized goat IgG (10ug/ml) followed by Alexa Fluor 488 secondary antibody (2ug/ml).



EB05427 (5µg/ml) staining of paraffin embedded Human Kidney. Heat induced antigen retrieval with citrate buffer pH 6, HRP-staining.



EB05427 Negative Control showing staining of paraffin embedded Human Kidney, with no primary antibody.