



UK Office

Everest Biotech Ltd

Cherwell Innovation Centre
77 Heyford Park
Upper Heyford
Oxfordshire
OX25 5HD
UK

Enquiries:

info@everestbiotech.com

Sales:

sales@everestbiotech.com

Tech support:

support@everestbiotech.com

Tel: +44 (0)1869 238326

Fax: +44 (0)1869 238327

US Office

Everest Biotech c/o Abcore

405 Maple Street, Suite A106
Ramona,
CA 92065
USA

Inquiries:

info@everestbiotech.com

Sales:

usasales@everestbiotech.com

Tech support:

support@everestbiotech.com

Tel: 888-320-4628 (toll-free)

Fax: 888-841-9041

www.everestbiotech.com

**Research Use Only. Not for
diagnostic or therapeutic use.**

EB05275 - Goat Anti-DAPK2 Antibody

Size: 100µg specific antibody in 200µl



Target Protein

Principal Names: DAPK2, death-associated protein kinase 2, DRP-1, DRP1, MGC119312, DAP kinase 2, DAP-kinase-related protein 1, OTTHUMP00000163874, death-associated kinase 2

Official Symbol: DAPK2

Accession Number(s): NP_055141.2; NP_001371929.1

Human GeneID(s): [23604](#)

Immunogen

Peptide with sequence C-KALHPRRRSSTS, from the C Terminus of the protein sequence according to NP_055141.2; NP_001371929.1.

Please note the [peptide](#) is available for sale.

Purification and Storage

Purified from goat serum by ammonium sulphate precipitation followed by antigen affinity chromatography using the immunizing peptide.

Supplied at 0.5 mg/ml in Tris saline, 0.02% sodium azide, pH7.3 with 0.5% bovine serum albumin.

Aliquot and store at -20°C. Minimize freezing and thawing.

Applications Tested

Peptide ELISA: antibody detection limit dilution 1:32000.

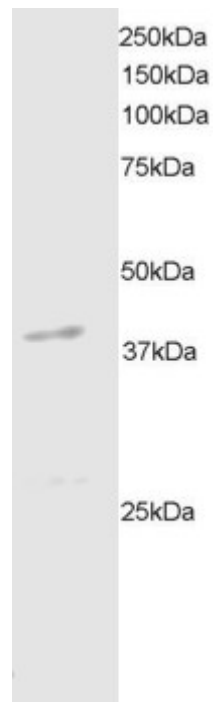
Western blot: Approx 40-45kDa bands seen in mouse brain extracts. Recommended for use at 1-3µg/ml. Primary incubation was for 1 hour.

IHC: Paraffin embedded Human Breast and Thyroid. Recommended concentration: 2.5µg/ml.

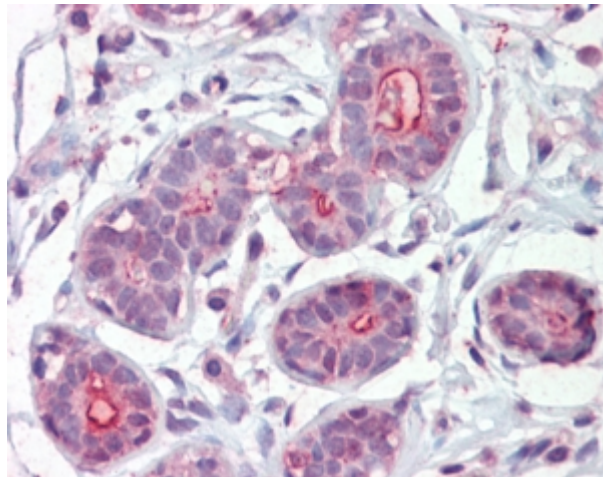
Species Reactivity

Tested: Human, Mouse

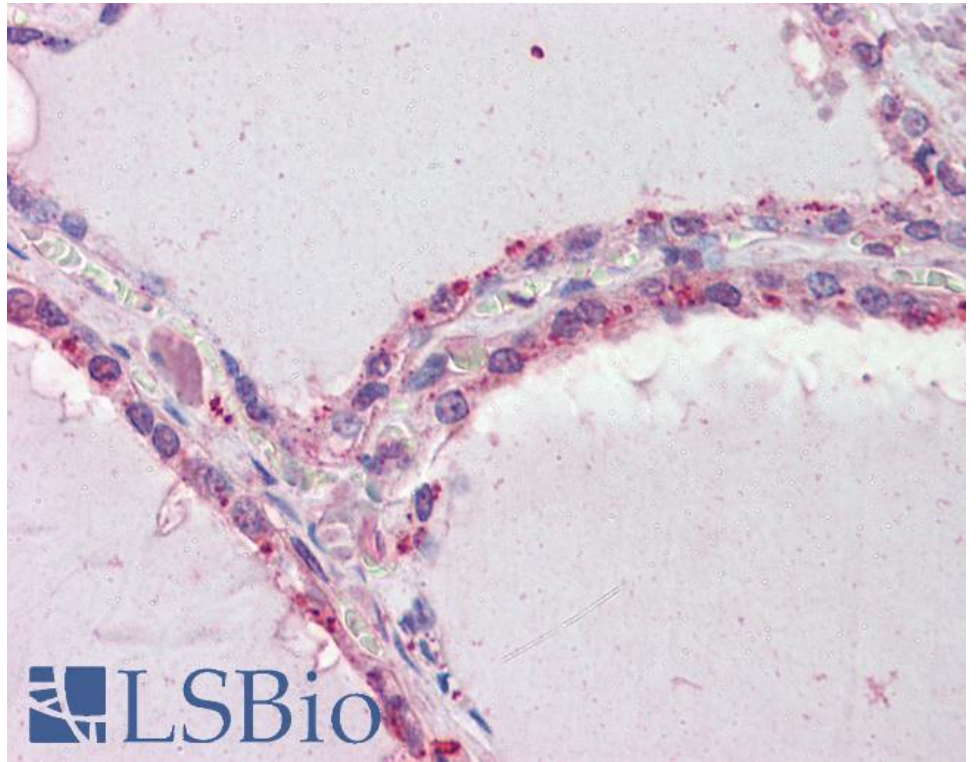
Expected from sequence similarity: Human, Mouse, Rat, Dog, Pig



EB05275 staining (2 μ g/ml) of mouse brain extracts (RIPA buffer, 35 μ g total protein per lane). Detected by chemiluminescence.



EB05275 (2.5 μ g/ml) staining of paraffin embedded Human Breast. Steamed antigen retrieval with citrate buffer pH 6, AP-staining.



EB05275 (2.5µg/ml) staining of paraffin embedded Human Thyroid. Steamed antigen retrieval with citrate buffer Ph 6, AP-staining.