



International Office

Everest Biotech Ltd

Vector Laboratories, Inc.
6737 Mowry Ave
Newark, CA 94560
United States

Customer Service:

customerservice@vectorlabs.com

Technical Service:

technical@vectorlabs.com

Tel: +1 (800) 227-6666

www.everestbiotech.com

**Research Use Only. Not for
diagnostic or therapeutic use.**

EB11321 - Goat Anti-DBH (aa437-448) Antibody

Size: 100µg specific antibody in 200µl



Target Protein

Principal Names: DBM, dopamine beta-hydroxylase, dopamine beta-hydroxylase (dopamine beta-monooxygenase), DBH

Official Symbol: DBH

Accession Number(s): NP_000778.3

Human GeneID(s): [1621](#)

Non-Human GeneID(s): 13166 (mouse), 25699 (rat)

Immunogen

Peptide with sequence C-DNHYSPPHFQEIR, from the internal region of the protein sequence according to NP_000778.3.

Please note the [peptide](#) is available for sale.

Purification and Storage

Purified from goat serum by ammonium sulphate precipitation followed by antigen affinity chromatography using the immunizing peptide.

Supplied at 0.5 mg/ml in Tris saline, 0.02% sodium azide, pH7.3 with 0.5% bovine serum albumin.

Aliquot and store at -20°C. Minimize freezing and thawing.

Applications Tested

Peptide ELISA: antibody detection limit dilution 1:128000.

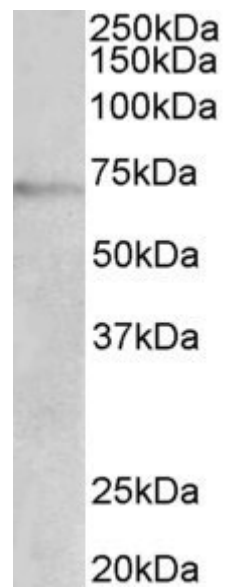
Western blot: Approx 70kDa band observed in lysates of cell line Jurkat (calculated MW of 69.1kDa according to NP_000778.3). Recommended concentration: 1-3µg/ml. Primary incubation was 1 hour. Preliminary testing was unsuccessful on Mouse and Rat Brain for this particular batch.

IHC: Paraffin embedded Human Adrenal Gland. Recommended concentration: 5µg/ml.

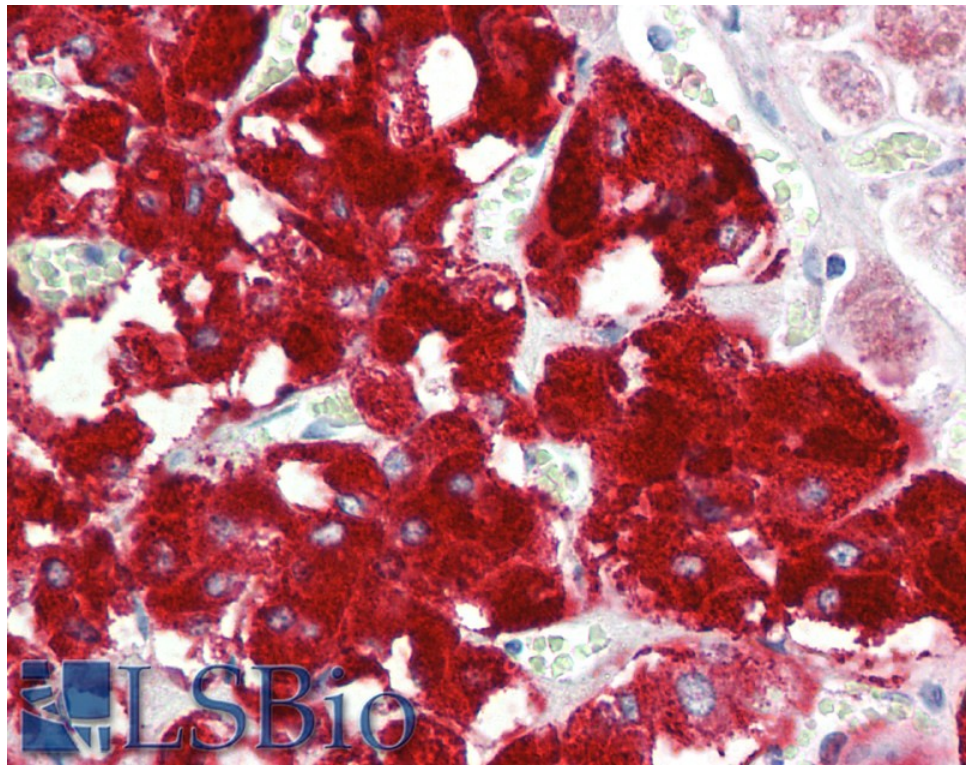
Species Reactivity

Tested: Human

Expected from sequence similarity: Human, Mouse, Rat, Pig, Cow



EB11321 (2 μ g/ml) staining of Jurkat lysate (35 μ g protein in RIPA buffer). Detected by chemiluminescence.



EB11321 (5 μ g/ml) staining of paraffin embedded Human Adrenal Gland. Steamed antigen retrieval with citrate buffer pH 6, AP-staining.