

UK Office

Everest Biotech Ltd

Cherwell Innovation Centre
77 Heyford Park
Upper Heyford
Oxfordshire
OX25 5HD
UK

Enquiries:

info@everestbiotech.com

Sales:

sales@everestbiotech.com

Tech support:

support@everestbiotech.com

Tel: +44 (0)1869 238326

www.everestbiotech.com

**Research Use Only. Not for
diagnostic or therapeutic use.**

EB12715 - Goat Anti-DC-SIGN / CD209 Antibody

Size: 100µg specific antibody in 200µl



Target Protein

Principal Names: CD209, CD209 molecule, CDSIGN, CLEC4L, DC-SIGN, DC-SIGN1, C-type lectin domain family 4 member L, C-type lectin domain family 4, member L, CD209 antigen, HIV gpl20-binding protein, dendritic cell-specific ICAM-3-grabbing non-integrin 1, dendritic cell-specific intracellular adhesion molecules (ICAM)-3 grabbing non-integrin

Official Symbol: CD209

Accession Number(s): NP_066978.1; NP_001138368.1; NP_001138369.1; NP_001138365.1; NP_001138366.1; NP_001138367.1; NP_001138371.1

Human GeneID(s): [30835](#)

Important Comments: This antibody is expected to recognize all reported isoforms.

Immunogen

Peptide with sequence C-NRGEPNNVGEED, from the internal region of the protein sequence according to NP_066978.1; NP_001138368.1; NP_001138369.1; NP_001138365.1; NP_001138366.1; NP_001138367.1; NP_001138371.1.

Please note the [peptide](#) is available for sale.

Purification and Storage

Purified from goat serum by ammonium sulphate precipitation followed by antigen affinity chromatography using the immunizing peptide.

Supplied at 0.5 mg/ml in Tris saline, 0.02% sodium azide, pH7.3 with 0.5% bovine serum albumin.

Aliquot and store at -20°C. Minimize freezing and thawing.

Applications Tested

Peptide ELISA: antibody detection limit dilution 1:128000.

Western blot: Approx. 50kDa band observed in lysates of cell lines K562 and THP-1, and in preliminary testing of Human Lung and Testes lysate (calculated MW of 45.8kDa according to NP_066978.1). This molecular weight is observed by other commercial sources, and was successfully blocked by incubation with the immunizing peptide.

Recommended concentration: 1-3µg/ml. Primary incubation 1 hour at room temperature.

Positive Control: A batch specific positive control lysate is available for this product.

Please contact Sales@everestbiotech.com for availability.

IHC: Paraffin embedded Human Placenta. Recommended concentration: 6µg/ml.

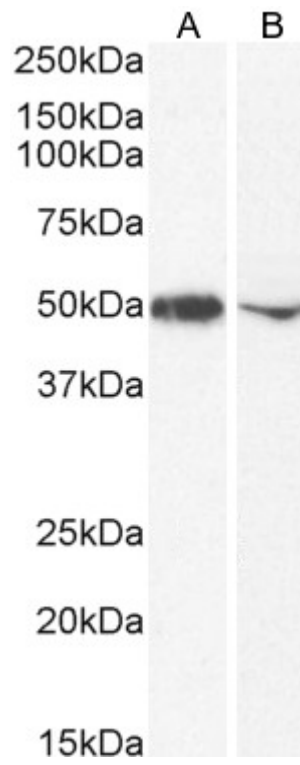
Immunofluorescence: Strong expression of the protein seen in the plasma membranes and cytoplasm of THP-1 cells. Recommended concentration: 10µg/ml.

Flow Cytometry: Flow cytometric analysis of THP-1 cells. Recommended concentration: 10ug/ml.

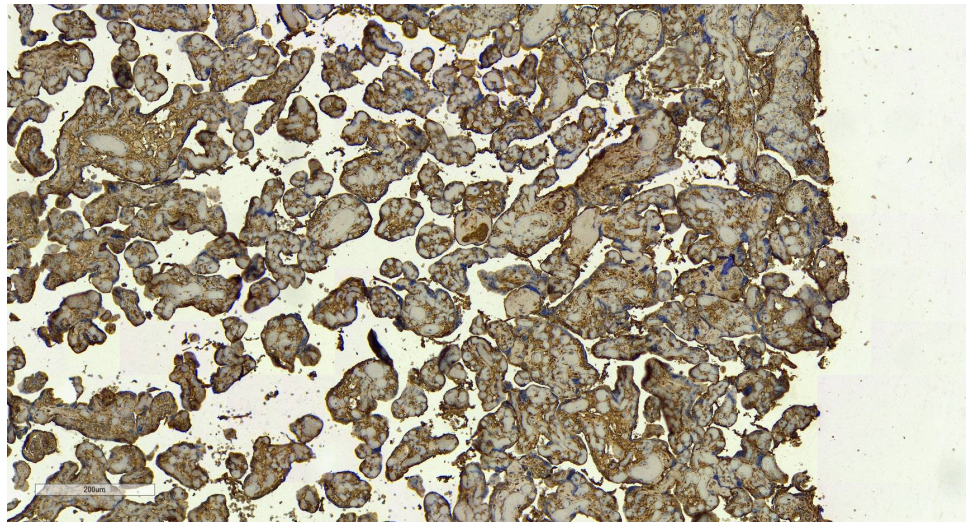
Species Reactivity

Tested: Human

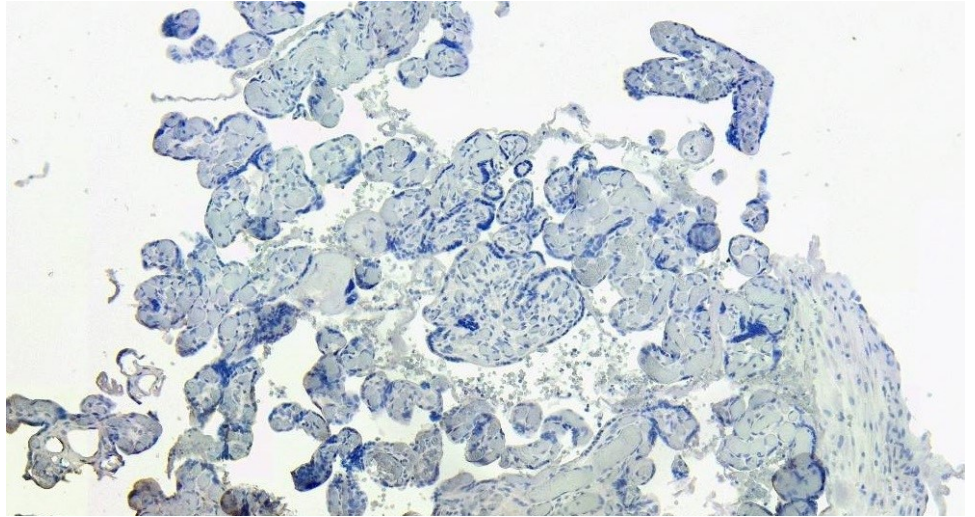
Expected from sequence similarity: Human



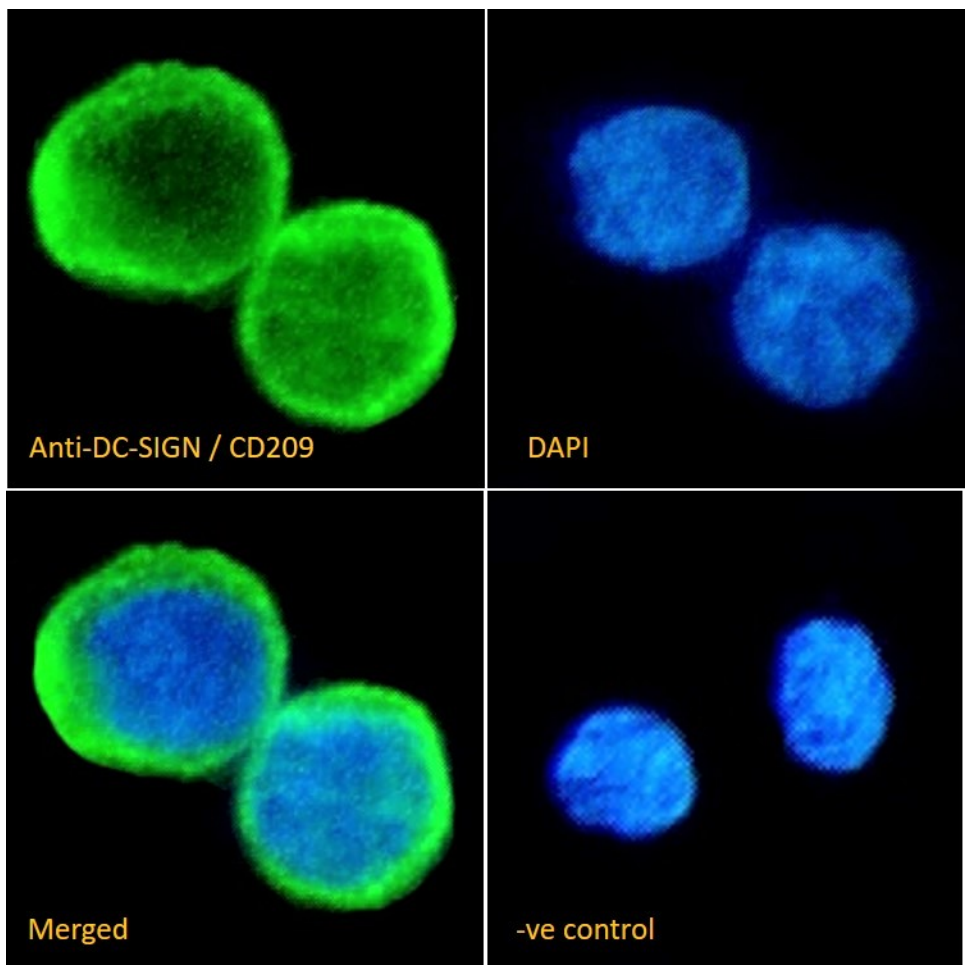
EB12715 (1 μ g/ml) staining of K562 (A) and (2 μ g/ml) THP-1 (B) cell lysate (35 μ g protein in RIPA buffer). Detected by chemiluminescence.



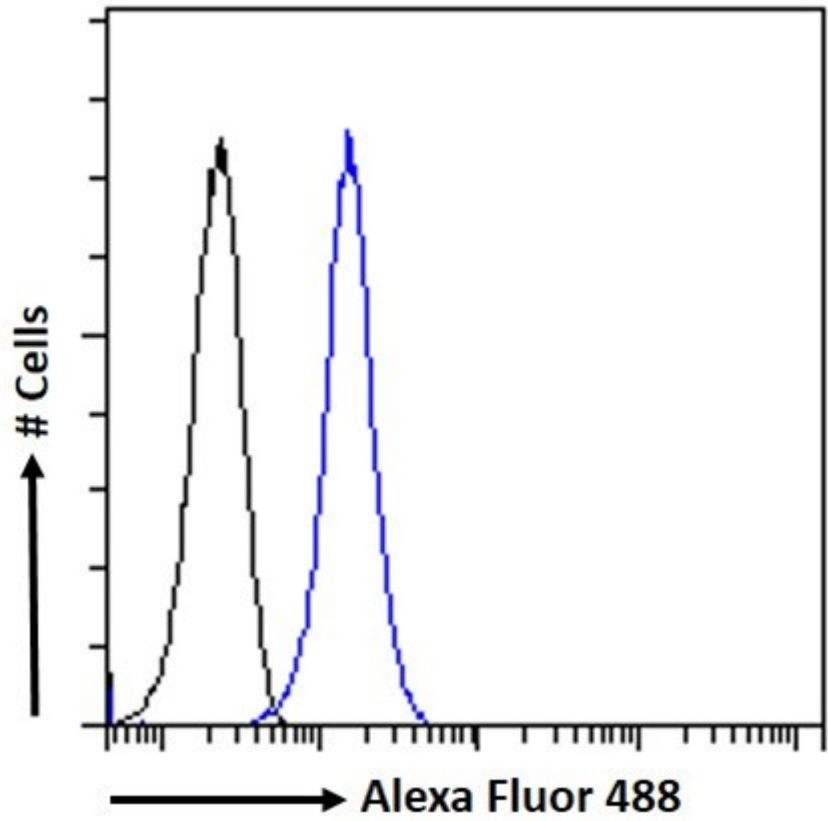
EB12715 (6 μ g/ml) staining of paraffin embedded Human Placenta. Heat induced antigen retrieval with citrate buffer pH 6, HRP-staining.



EB12715 Negative Control showing staining of paraffin embedded Human Placenta, with no primary antibody.



EB12715 Immunofluorescence analysis of paraformaldehyde fixed THP-1 immobilized on Shi-fix™ plus cover-slips. Primary incubation 1hr (1:50 dilution) followed by Alexa Fluor® 488 secondary antibody (1:2000 dilution), showing membrane and cytoplasmic staining. The nuclear stain is DAPI (blue). Negative control: Anti-Goat IgG followed by Alexa Fluor® 488 secondary antibody.



EB12715 Flow cytometric analysis of paraformaldehyde fixed THP1 cells (blue line), permeabilized with 0.5% Triton. Primary incubation 1hr (10ug/ml) followed by Alexa Fluor 488 secondary antibody (1ug/ml). IgG control: Unimmunized goat IgG (black line) followed by Alexa Fluor 488 secondary antibody.