



## UK Office

### Everest Biotech Ltd

Cherwell Innovation Centre  
77 Heyford Park  
Upper Heyford  
Oxfordshire  
OX25 5HD  
UK

Enquiries:

[info@everestbiotech.com](mailto:info@everestbiotech.com)

Sales:

[sales@everestbiotech.com](mailto:sales@everestbiotech.com)

Tech support:

[support@everestbiotech.com](mailto:support@everestbiotech.com)

Tel: +44 (0)1869 238326

[www.everestbiotech.com](http://www.everestbiotech.com)

**Research Use Only. Not for  
diagnostic or therapeutic use.**

## EB07125 - Goat Anti-DCP1A Antibody

Size: 100µg specific antibody in 200µl



### Target Protein

**Principal Names:** DCP1A, decapping enzyme, HSA275986, Nbla00360, SMAD4IP1, SMIF, Smad4-interacting transcriptional co-activator, decapping enzyme hDcp1a, putative protein product of Nbla00360, transcription factor SMIF

**Official Symbol:** DCP1A

**Accession Number(s):** NP\_060873.3

**Human GeneID(s):** [55802](#)

**Non-Human GeneID(s):** 75901 (mouse)

### Immunogen

Peptide with sequence C-QVLTKNKDNHN, from the C Terminus of the protein sequence according to NP\_060873.3.

Please note the [peptide](#) is available for sale.

### Purification and Storage

Purified from goat serum by ammonium sulphate precipitation followed by antigen affinity chromatography using the immunizing peptide.

Supplied at 0.5 mg/ml in Tris saline, 0.02% sodium azide, pH7.3 with 0.5% bovine serum albumin.

Aliquot and store at -20°C. Minimize freezing and thawing.

### Applications Tested

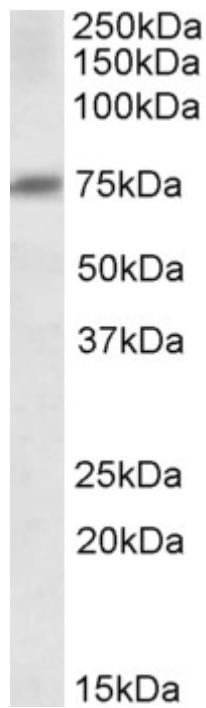
**Peptide ELISA:** antibody detection limit dilution 1:16000.

**Western blot:** Approx 75kDa band observed in lysates of cell line A431 and HeLa (calculated MW of 63.3kDa according to NP\_060873.3). Recommended concentration: 1-3µg/ml. Primary incubation was 1 hour

### Species Reactivity

**Tested:** Human

**Expected from sequence similarity:** Human, Mouse, Rat



EB07125 (1µg/ml) staining of lysate of cell line A431 (35µg protein in RIPA buffer). Detected by chemiluminescence.