



International Office

Everest Biotech Ltd

Vector Laboratories, Inc.
6737 Mowry Ave
Newark, CA 94560
United States

Customer Service:

customerservice@vectorlabs.com

Technical Service:

technical@vectorlabs.com

Tel: +1 (800) 227-6666

www.everestbiotech.com

**Research Use Only. Not for
diagnostic or therapeutic use.**

EB09917-B - Goat Anti-DCUN1D1, Biotinlyated Antibody

Size: 100µg specific antibody in 200µl



Target Protein

Principal Names: DCN1, defective in cullin neddylation 1, domain containing 1 (S. cerevisiae), DCUN1L1, RP42, RP42 homolog, SCCRO, SCRO, squamous cell carcinoma-related oncogene, Tes3, DCUN1D1

Official Symbol: DCUN1D1

Accession Number(s): NP_065691.2

Human GeneID(s): [54165](#)

Non-Human GeneID(s): 114893 (mouse)

Immunogen

Peptide with sequence C-RPQIAGTKSTT., from the C Terminus of the protein sequence according to NP_065691.2.

Please note the [peptide](#) is available for sale.

Purification and Storage

Purified from goat serum by ammonium sulphate precipitation followed by antigen affinity chromatography using the immunizing peptide.

Supplied at 0.5 mg/ml in Tris saline, 0.02% sodium azide, pH7.3 with 0.5% bovine serum albumin.

Aliquot and store at -20°C. Minimize freezing and thawing.

Applications Tested

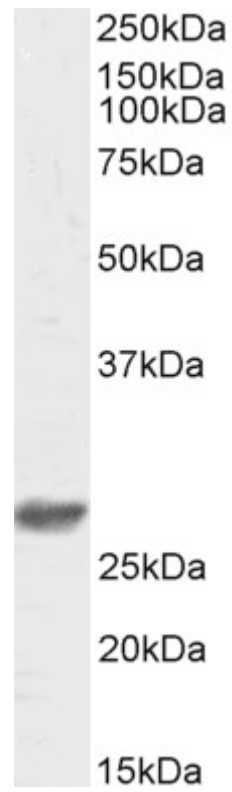
Peptide ELISA: antibody detection limit dilution 1:16000.

Western blot: Approx 28kDa band observed in HepG2 lysates (calculated MW of 30.1kDa according to NP_065691.2). Recommended concentration: 0.3-1µg/ml.

Species Reactivity

Tested: Human

Expected from sequence similarity: Human, Mouse, Cow



Biotinylated EB09917 (0.5ug/ml) staining of HepG2 lysate (35µg protein in RIPA buffer). Primary incubation was 1 hour. Detected by chemiluminescence, using streptavidin-HRP and using NAP blocker as a substitute for skimmed milk.