



International Office

Everest Biotech Ltd

Vector Laboratories, Inc.
6737 Mowry Ave
Newark, CA 94560
United States

Customer Service:

customerservice@vectorlabs.com

Technical Service:

technical@vectorlabs.com

Tel: +1 (800) 227-6666

www.everestbiotech.com

**Research Use Only. Not for
diagnostic or therapeutic use.**

EB05277 - Goat Anti-DDAH2 Antibody

Size: 100µg specific antibody in 200µl



Target Protein

Principal Names: DDAH2, dimethylarginine dimethylaminohydrolase 2, DDAH, G6a, NG30, DDAHII, dimethylarginine dimethylaminohydrolase II, NG-dimethylarginine dimethylamino hydrolase homolog, OTTHUMP00000062666, DADB-110M10.5, OTTHUMP00000029307, OTTHUMP00000174406, alternative name: NG30, G6a, dimethylarginine dimethylaminohydrolase II

Official Symbol: DDAH2

Accession Number(s): NP_039268.1

Human GeneID(s): [23564](#)

Immunogen

Peptide with sequence SSLCLVLSTRPHS, from the C Terminus of the protein sequence according to NP_039268.1.

Please note the [peptide](#) is available for sale.

Purification and Storage

Purified from goat serum by ammonium sulphate precipitation followed by antigen affinity chromatography using the immunizing peptide.

Supplied at 0.5 mg/ml in Tris saline, 0.02% sodium azide, pH7.3 with 0.5% bovine serum albumin.

Aliquot and store at -20°C. Minimize freezing and thawing.

Applications Tested

Peptide ELISA: antibody detection limit dilution 1:16000.

Western blot: Approx 28kDa band observed in Human Lung lysates (calculated MW of 29.6kDa according to NP_039268.1). Recommended concentration: 0.1-0.3µg/ml. Primary incubation was 1 hour. Preliminary testing was unsuccessful on Mouse and Rat for this particular batch.

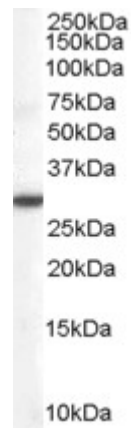
Immunofluorescence: Strong expression of the protein seen in the cytoplasm of A431 cells. Recommended concentration: 10µg/ml.

Flow Cytometry: Flow cytometric analysis of A431 cells. Recommended concentration: 10ug/ml.

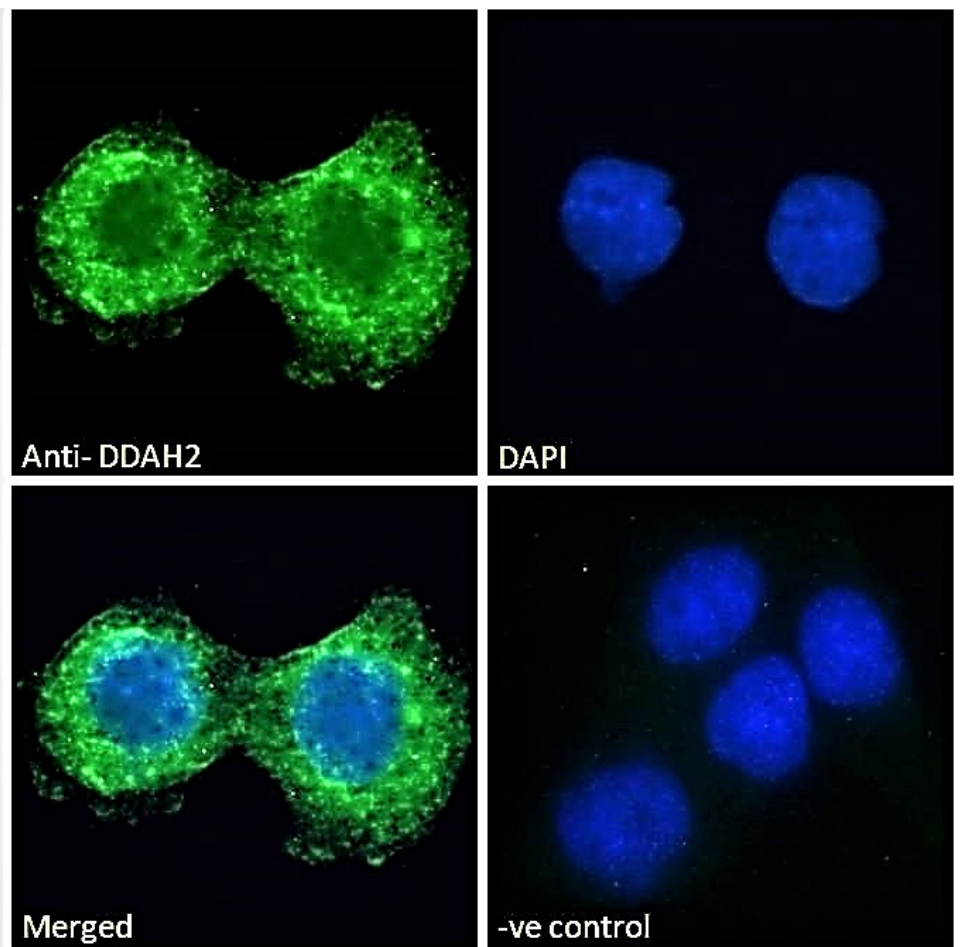
Species Reactivity

Tested: Human

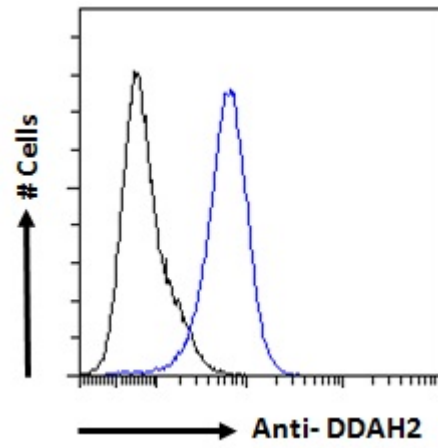
Expected from sequence similarity: Human, Mouse, Rat, Dog, Cow



EB05277 (0.1 μ g/ml) staining of Human Lung lysate (35 μ g protein in RIPA buffer). Detected by chemiluminescence.



EB05277 Immunofluorescence analysis of paraformaldehyde fixed A431 cells, permeabilized with 0.15% Triton. Primary incubation 1hr (10 μ g/ml) followed by Alexa Fluor 488 secondary antibody (2 μ g/ml), showing cytoplasmic staining. The nuclear stain is DAPI (blue). Negative control: Unimmunized goat IgG (10 μ g/ml) followed by Alexa Fluor 488 secondary antibody (2 μ g/ml).



EB05277 Flow cytometric analysis of paraformaldehyde fixed A431 cells (blue line), permeabilized with 0.5% Triton. Primary incubation 1hr (10ug/ml) followed by Alexa Fluor 488 secondary antibody (1ug/ml). IgG control: Unimmunized goat IgG (black line) followed by Alexa Fluor 488 secondary antibody.