

## UK Office

### Everest Biotech Ltd

Cherwell Innovation Centre  
77 Heyford Park  
Upper Heyford  
Oxfordshire  
OX25 5HD  
UK

Enquiries:

[info@everestbiotech.com](mailto:info@everestbiotech.com)

Sales:

[sales@everestbiotech.com](mailto:sales@everestbiotech.com)

Tech support:

[support@everestbiotech.com](mailto:support@everestbiotech.com)

Tel: +44 (0)1869 238326

[www.everestbiotech.com](http://www.everestbiotech.com)

**Research Use Only. Not for  
diagnostic or therapeutic use.**

## EB05033-T - Goat Anti-DDB1 Antibody - Trial

Size: 20µg specific antibody in 40µl



### Target Protein

**Principal Names:** DDB1, damage-specific DNA binding protein 1, 127kDa, DDBA, XAP1, XPCE, XPE-BF, UV-DDB1, DDB p127 subunit, damage-specific DNA binding protein 1 (127kD), XPE

**Official Symbol:** DDB1

**Accession Number(s):** NP\_001914.3

**Human GeneID(s):** [1642](#)

**Non-Human GeneID(s):** 64470 (rat)

### Immunogen

Peptide with sequence C-DLIKVVEELTRIH, from the C Terminus of the protein sequence according to NP\_001914.3.

Please note the [peptide](#) is available for sale.

### Purification and Storage

Purified from goat serum by ammonium sulphate precipitation followed by antigen affinity chromatography using the immunizing peptide.

Supplied at 0.5 mg/ml in Tris saline, 0.02% sodium azide, pH7.3 with 0.5% bovine serum albumin.

Aliquot and store at -20°C. Minimize freezing and thawing.

### Applications Tested

**Peptide ELISA:** antibody detection limit dilution 1:32000.

**Western blot:** Approx 140kDa band observed in lysates of cell line HeLa, HepG2 and Jurkat (calculated MW of 126.9kDa according to Human NP\_001914.3). Recommended concentration: 1-2µg/ml. Approx 140kDa band observed in lysates of cell line NIH3T3 and approx 150kDa band observed in lysates of cell line NSO (calculated MW of 126.8kDa according to Mouse NP\_056550.1). Recommended concentration: 0.01-0.03µg/ml. Primary incubation was 1 hour. Preliminary testing was unsuccessful on Rat Kidney for this particular batch.

**IHC:** Paraffin embedded Human Brain (Cortex). Recommended concentration: 4-6µg/ml.

### Species Reactivity

**Tested:** Human, Mouse

**Expected from sequence similarity:** Human, Mouse, Rat, Dog, Cow

### Specific Reference

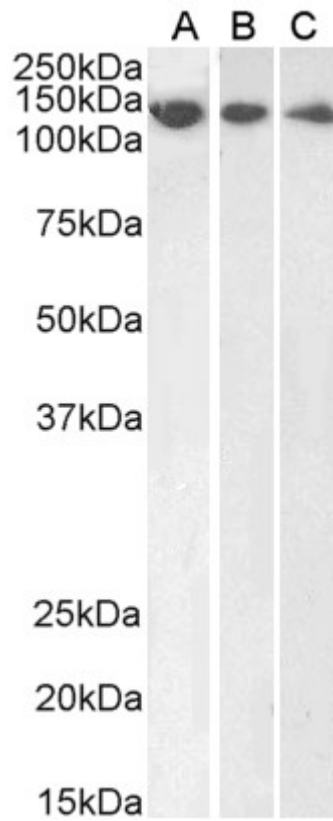
**This antibody (previous batch) has been successfully used in WB and IP on Human:**

Li T, Robert EI, van Breugel PC, Strubin M, Zheng N.

A promiscuous alpha-helical motif anchors viral hijackers and substrate receptors to the CUL4-DDB1 ubiquitin ligase machinery.

Nat Struct Mol Biol. 2010 Jan;17(1):105-11.

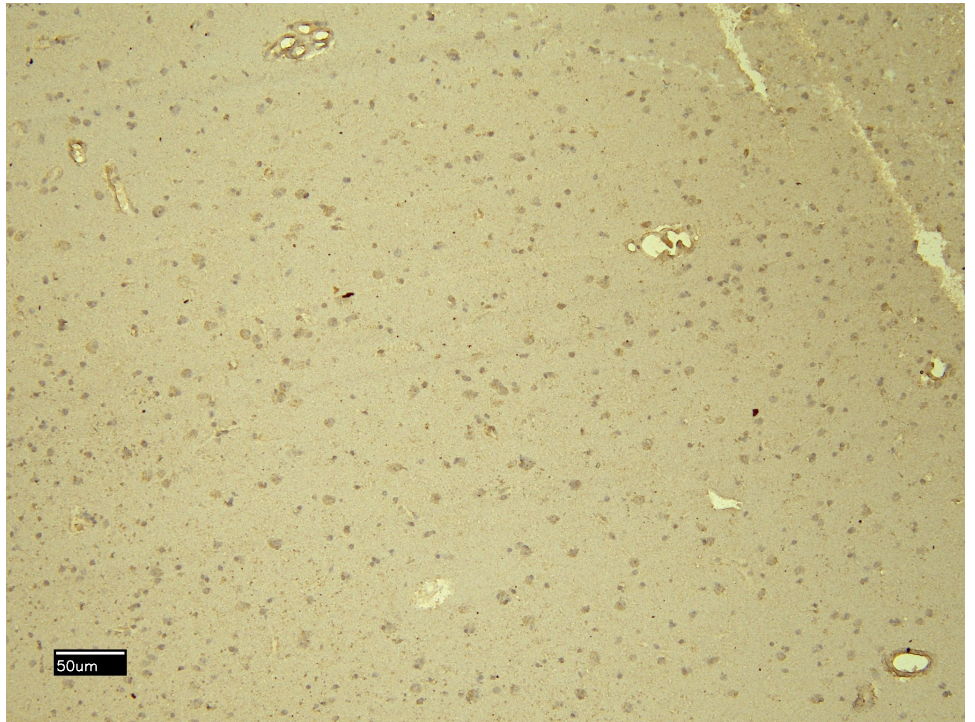
PMID: 19966799



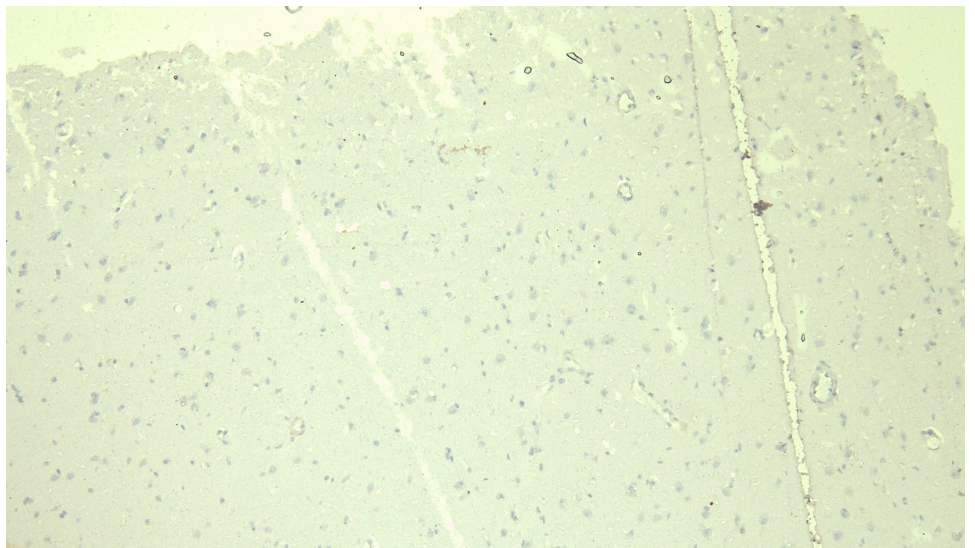
EB05033 (1 $\mu$ g/ml) staining of HeLa (A), HepG2 (B) and Jurkat (C) lysate (35 $\mu$ g protein in RIPA buffer). Detected by chemiluminescence.



EB05033 (0.01 $\mu$ g/ml) staining of NIH3T3 (A) and NSO (B) lysate. (35 $\mu$ g protein in RIPA buffer). Detected by chemiluminescence.



EB05033 (4µg/ml) staining of paraffin embedded Human Cortex. Heat induced antigen retrieval with citrate buffer pH 6, HRP-staining.



EB05033 Negative Control showing staining of paraffin embedded Human Cortex, with no primary antibody.